



# **National Transit Pass System (NTPS)**

**National Portal for  
Inter-State/Intra-State  
Movement of Timber,  
Bamboo and other  
Forest produce**

# Objectives

- **This system will be used for issuing, monitoring and keeping records of transit permits for inter-state and intra-state transportation of timber and bamboo from private lands/government/private depot.**

## Need

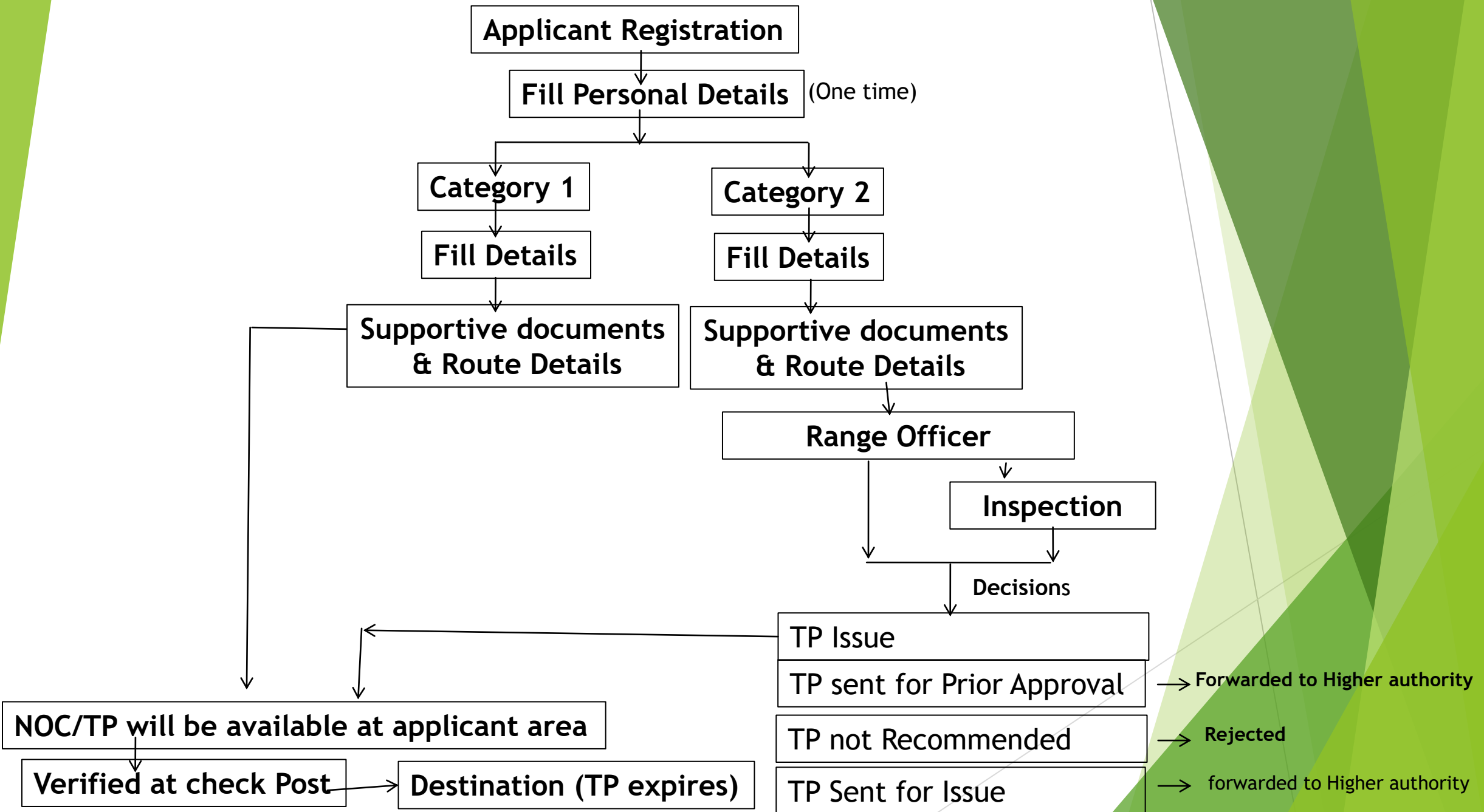
- **To expedite issuance of transit permits for timber, bamboo and other minor forest produce.**
- **To replace manual paper based transit system by online transit system for ease of doing business.**
- **One permit for whole India for transit of timber , bamboo and other minor forest produce for ease of doing business.**
- **To enhance transparency in obtaining transit permits**
- **To prevent hardships of timber and bamboo producers, farmers and transporters in obtaining permits and at forest check posts**
- **To facilitate agro-forestry activities.**

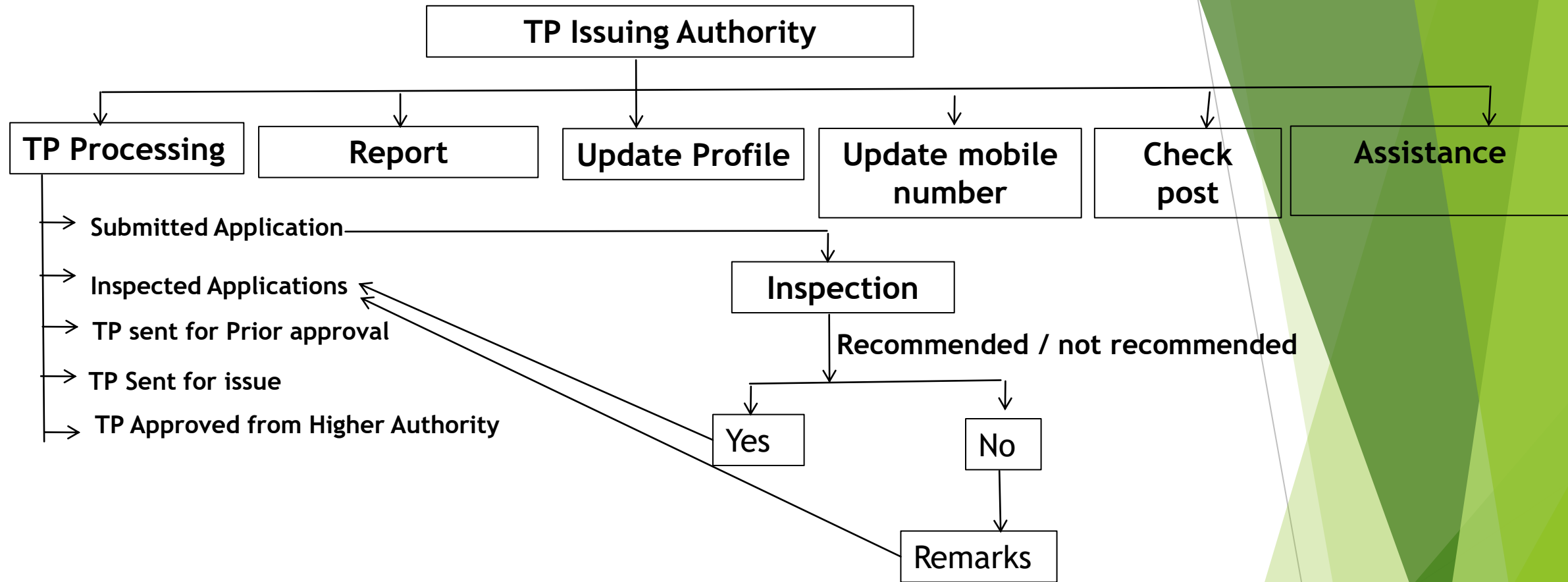
# Features and Functionalities

- ▶ **It is a role based and work flow based application**
- ▶ **Online registration and submission of the Application for Transit Permit or NOC**
- ▶ **Every State have state specific acts and rules regarding transit passes. The system incorporates these in the e-transit system.**
- ▶ **Online application for Species grown on private land which are exempted from transit pass regime.**
- ▶ **Online application submission for Species grown on private land which are not exempted from transit pass regime.**
- ▶ **Online generation of Transit Permit or NOC on the basis of category of species**

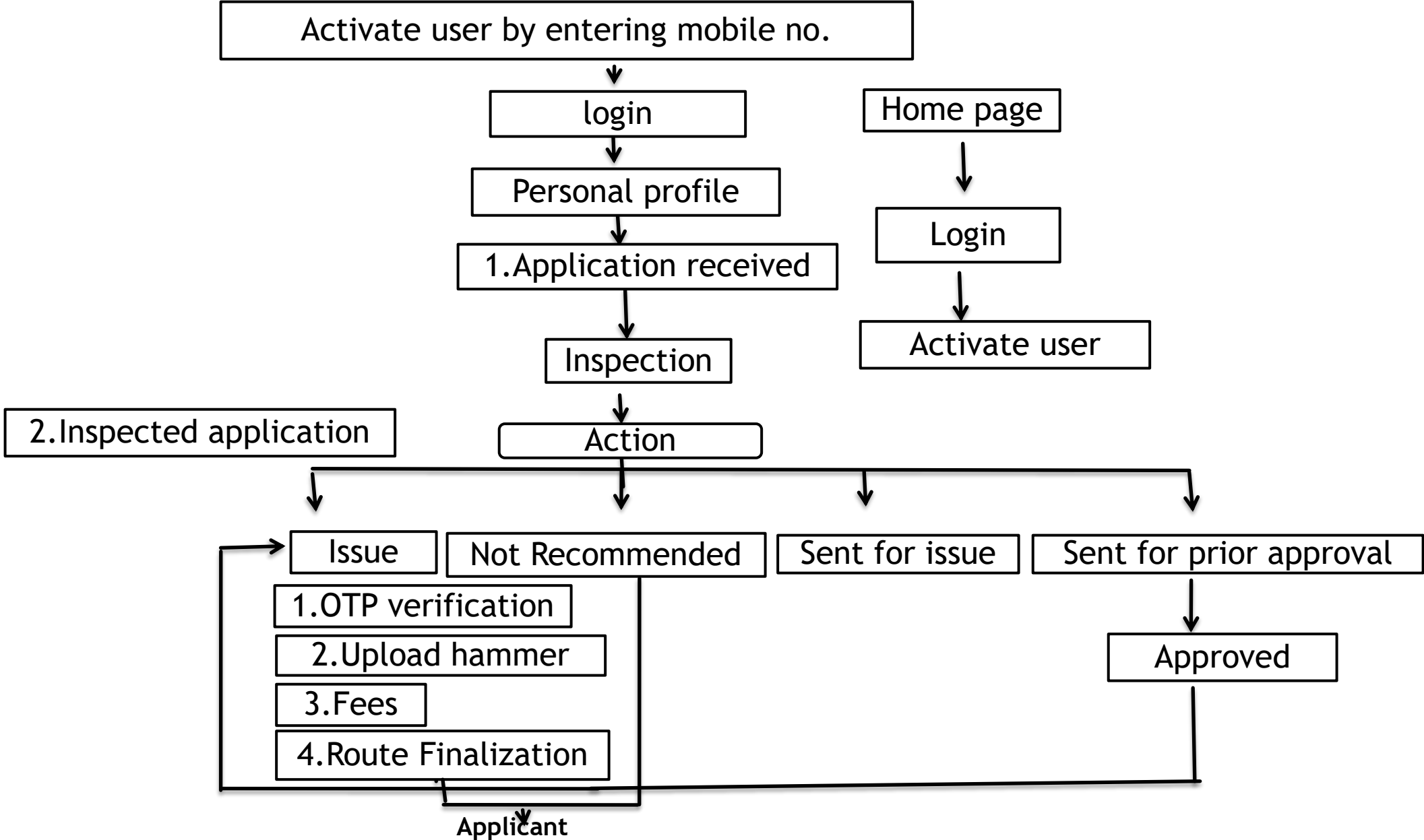
# Features and Functionalities

- ▶ **The probable route of transportation as a part of transit Permit**
- ▶ **Driver details can be changed at the time of downloading of Transit Permit**
- ▶ **Mobile app : for filling the details by the applicant. It will facilitate the inspecting authority to carry out inspection. TP verifier can verify at barriers or any other officers can verify TP/NOC during the movement.**
- ▶ **Dashboard with two different features: First feature for monitoring the status of TP in terms of TP Processing i.e., TP issued, Not recommended, TP Pending. Second feature for Tracking TP for Complete, Incomplete and expired TPs on the basis of crossing the barriers during the movement.**
- ▶ **Verifying the movement of the vehicle by scanning the QR Code generated through the system**





# Work flow for RFO



# Approving Authority

(Conservator Of Forest)  
( Divisional Forest Officers)  
(Assistant Conservator Of Forest)

**TP Processing**

**Reports**

**Assistance**

**Update Profile**

**Update Profile**

**Dashboard**

**Check post**

(For Applications Monitoring)  
&  
(TP Tracking)

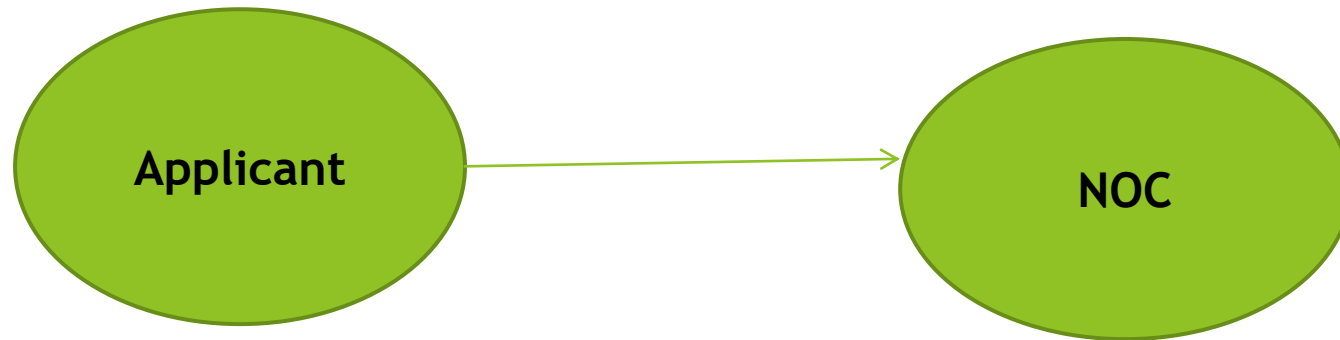
- TP Received for Approval
- TP Received after Approval
- TP Sent for Issue to higher Authority
- TP Sent for Approval

- Circle Level
- Division Level
- Range Level



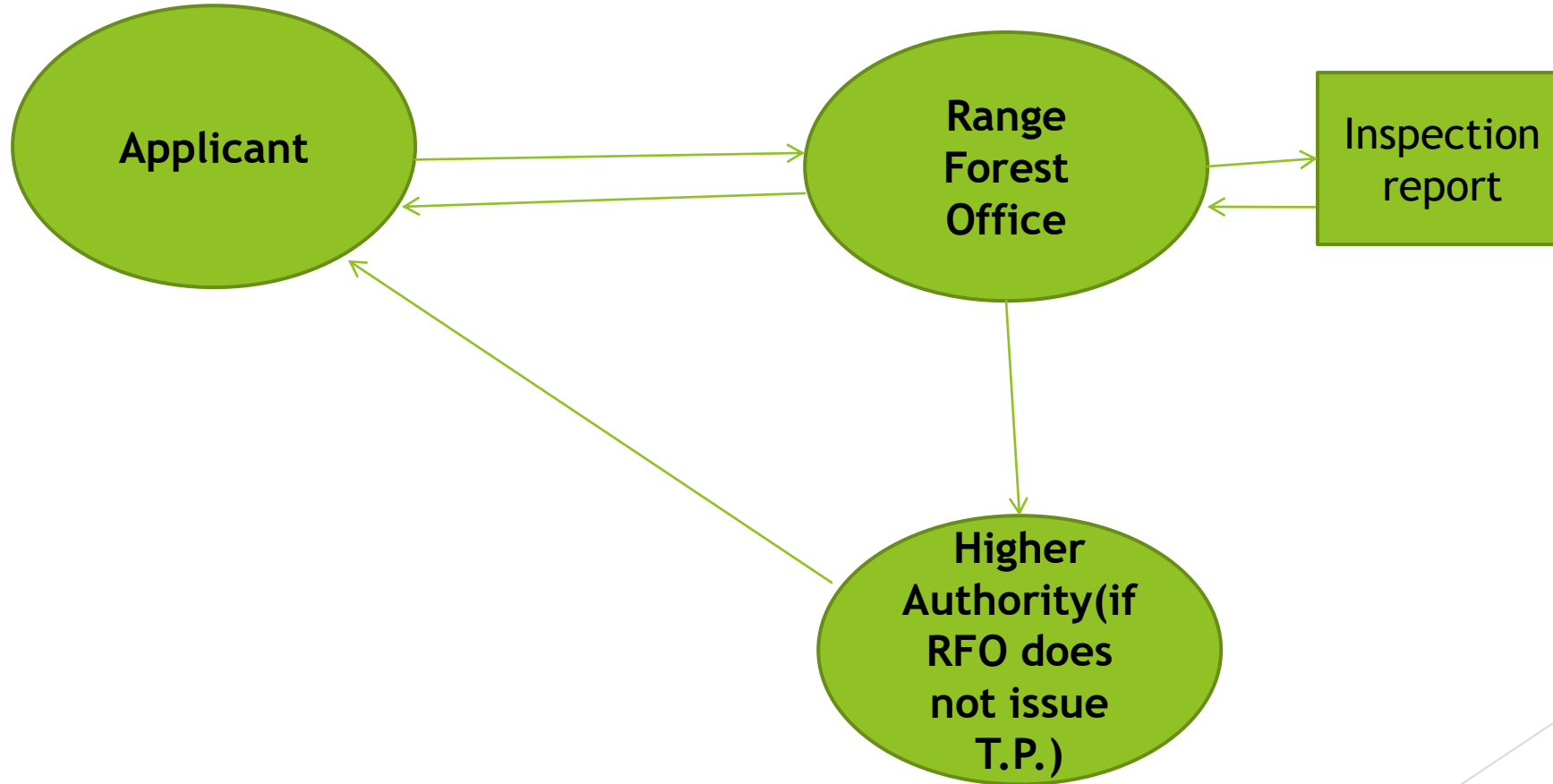
# Work Flow

- ▶ **Category 1: Species grown on private land which are exempted from transit pass regime**

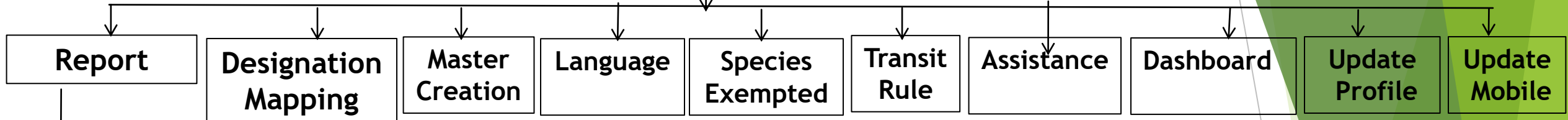


# Work Flow

- ▶ **Category 2: Species grown on private land which are not exempted from transit pass regime**



# State Administrative Authority



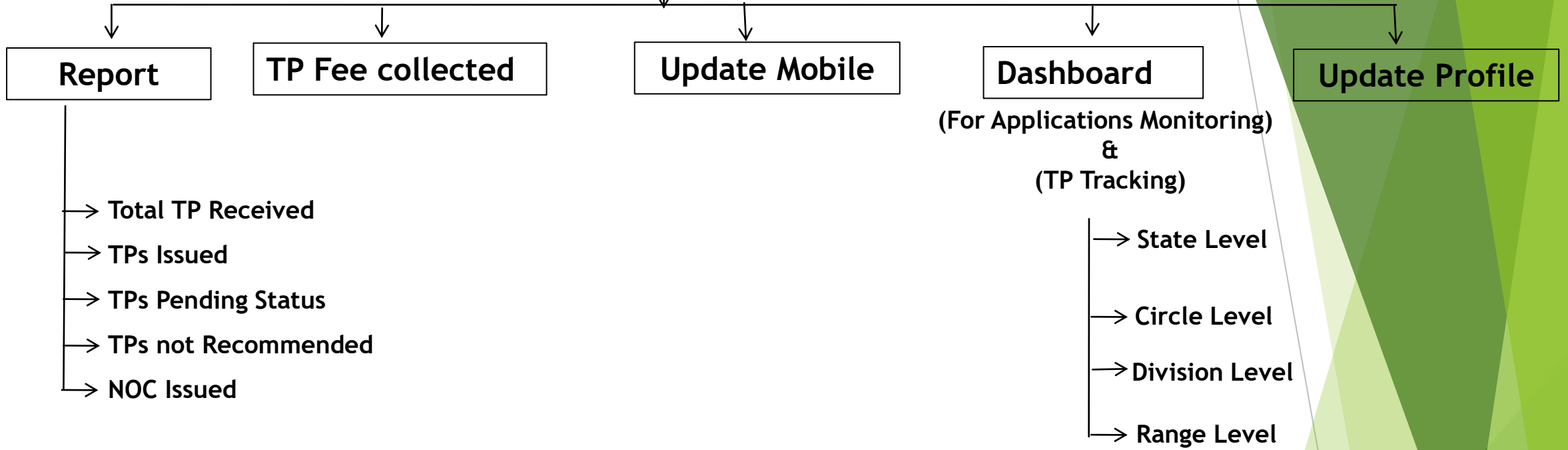
- Total TP Received
- TPs Issued
- TPs Pending Status
- TPs not Recommended
- NOC Issued

- Circle
- Division
- Range
- Check post

(For Applications Monitoring)  
&  
(TP Tracking)

- Circle Level
- Division Level
- Range Level

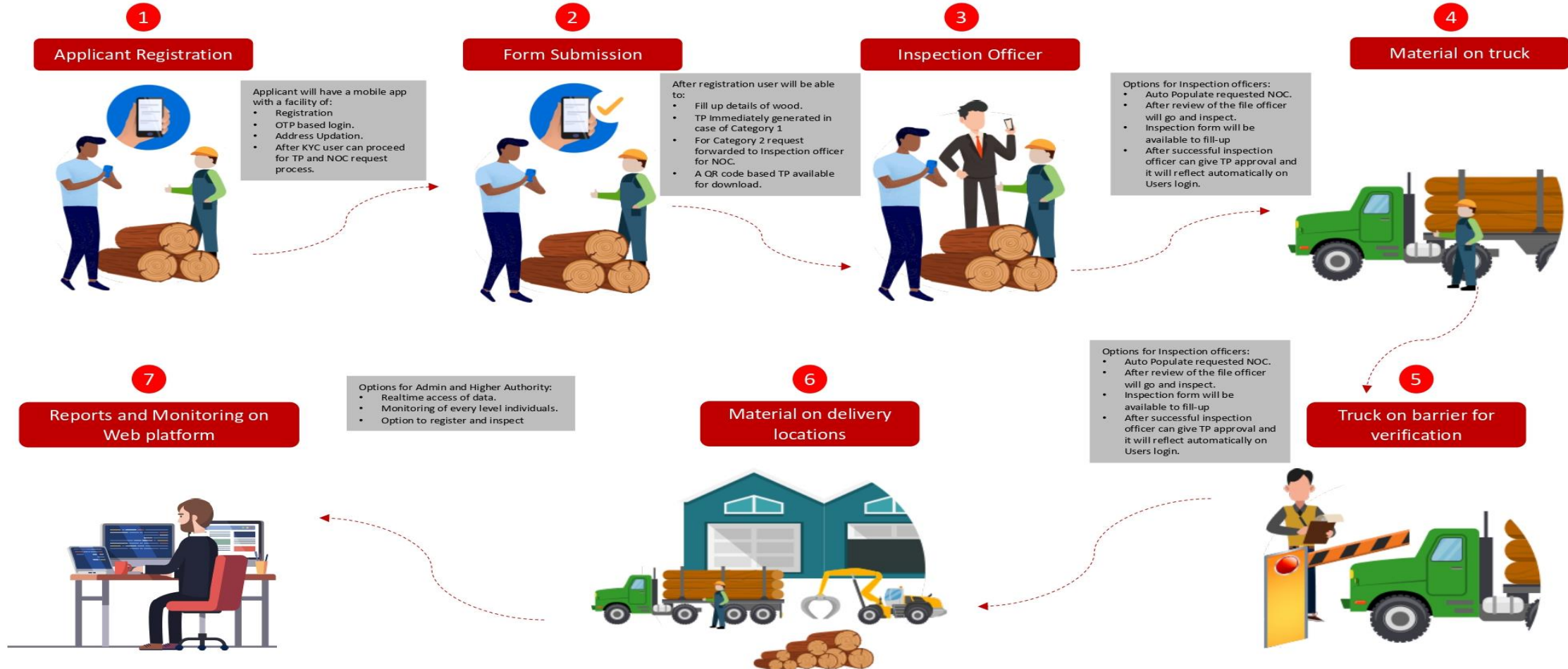
# Central Monitoring Authority



# Functionalities of Mobile App

## Work-flow Bamboo Application

Phase-1





**Thank You**

