



2018-2019

# Survey Monitoring Report

Plantation under West Bengal Forest &  
Biodiversity Conservation Project

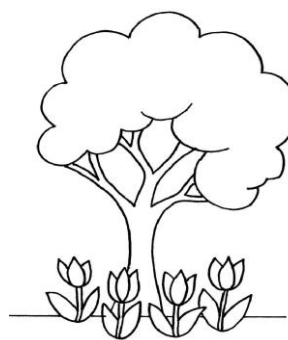


Directorate of Forest  
Government of West Bengal  
Monitoring (South) Division  
Monitoring Circle



# CONTENTS

Chapter	Page No	Detail in Chapter	Page No
Foreword	1		
Preface	2		
Notes of CF, Monitoring Circle, WB	3		
Acknowledgement	4		
Abbreviations	5		
Calendar of works	6		
Introduction	7		
Methodology	7-10	Pre-survey works	8
		Field works	8
		Calculation of survival percentage	8
		Category wise Survival percentage of plantations	9
		Scoring index for 1 <sup>st</sup> year old plantation	10
		Scoring index for 3 <sup>rd</sup> year old plantation	10
		Scoring index for 5 <sup>th</sup> year old plantation	10
		Table for colour code	10
Area statement of 2018 & 2015 plantation	11		
Overall WSP of 1 <sup>st</sup> year & 4 <sup>th</sup> year plantation	12		
DMU wise weighted survival % & weighted performance score (1 <sup>st</sup> year plantation, year-2018)	13		
DMU wise weighted survival % & weighted performance score (4 <sup>th</sup> year plantation, year-2015)	14		
Model & category wise 1 <sup>st</sup> year & 4 <sup>th</sup> year plantation based on WSP	15		
Change of WSP (WSP in 1 <sup>st</sup> year and 4 <sup>th</sup> year of 2015 plantation)	16		
Model wise representation, 1 <sup>st</sup> year (2018), 4 <sup>th</sup> year (2015) plantation	17-19	A1	17
		A2	17
		A3	18
		A4 (2017-18)	18
		B1	18



Chapter	Page No	Detail in Chapter	Page No		
<b>Detail monitoring report of Central circle</b>	<b>19-23</b>	1 <sup>st</sup> year (2018 Plantation) - DMU wise performance	20		
		4 <sup>th</sup> year (2015 Plantation)- DMU wise performance	21		
		WSP over the Years			
		WSP in 1 <sup>st</sup> & 4 <sup>th</sup> Year (2015 plantation over 4 years)	21-22		
		Category wise weighted survival% (except A4)- 1 <sup>st</sup> year (2018 Plantation)	22		
		Category wise weighted survival%- 4 <sup>th</sup> year (2014 Plantation)	22		
		Circle performance at a glance except A4 (Performance Score, for 1 <sup>st</sup> year, 2018)	22-23		
		Circle performance at a glance (Performance Score, for 4 <sup>th</sup> year, 2015)	23		
		<b>Detail monitoring report of South East circle</b>	<b>24-28</b>	1 <sup>st</sup> year (2018 Plantation) - DMU wise performance	25
				4 <sup>th</sup> year (2015 Plantation)- DMU wise performance	26
WSP over the Years					
WSP in 1 <sup>st</sup> & 4 <sup>th</sup> Year (2015 plantation over 4 years)	26-27				
Category wise weighted survival% (except A4)- 1 <sup>st</sup> year (2018 Plantation)	27				
Category wise weighted survival%- 4 <sup>th</sup> year (2014 Plantation)	27				
Circle performance at a glance except A4 (Performance Score, for 1 <sup>st</sup> year, 2018)	27-28				
Circle performance at a glance (Performance Score, for 4 <sup>th</sup> year, 2015)	28				
<b>Detail monitoring report of South West circle</b>	<b>29-33</b>			1 <sup>st</sup> year (2018 Plantation) - DMU wise performance	30
				4 <sup>th</sup> year (2015 Plantation)- DMU wise performance	31
		WSP over the Years			
		WSP in 1 <sup>st</sup> & 4 <sup>th</sup> Year (2015 plantation over 4 years)	31		
		Category wise weighted survival% (except A4)- 1 <sup>st</sup> year (2018 Plantation)	32		
		Category wise weighted survival%- 4 <sup>th</sup> year (2014 Plantation)	32		
		Circle performance at a glance except A4 (Performance Score, for 1 <sup>st</sup> year, 2018)	32-33		
		Circle performance at a glance (Performance Score, for 4 <sup>th</sup> year, 2015)	33		



Chapter	Page No	Detail in Chapter	Page No	
<b>Detail monitoring report of Western circle</b>	<b>34-38</b>	1 <sup>st</sup> year (2018 Plantation) - DMU wise performance	35	
		4 <sup>th</sup> year (2015 Plantation)- DMU wise performance	36	
		WSP over the Years		
		WSP in 1 <sup>st</sup> & 4 <sup>th</sup> Year (2015 plantation over 4 years)	36-37	
		Category wise weighted survival% (except A4)- 1 <sup>st</sup> year (2018 Plantation)	37	
		Category wise weighted survival%- 4 <sup>th</sup> year (2014 Plantation)	37	
		Circle performance at a glance except A4 (Performance Score, for 1 <sup>st</sup> year, 2018)	37-38	
		Circle performance at a glance (Performance Score, for 4 <sup>th</sup> year, 2015)	38	
		<b>Inter circle performance at a glance except A4 (2017-18) (PS)</b>	<b>39</b>	
		<b>Model wise category of plantation 2018 &amp; 2015</b>	<b>40</b>	
<b>Detail monitoring data, 1<sup>st</sup> year, 2018 plantation</b>	<b>41-54</b>	Central Circle	41-46	
		South East Circle	46-47	
		South West Circle	47-49	
		Western Circle	49-54	
<b>Detail monitoring data, 4<sup>th</sup> year, 2015 plantation</b>	<b>55-64</b>	Central Circle	55-60	
		South East Circle	60-61	
		South West Circle	61-62	
		Western Circle	62-64	
<b>Detail monitoring data, A4 model (2017-18) plantation</b>	<b>65-72</b>	Central Circle	65-66	
		South East Circle	67	
		South West Circle	67-68	
		Western Circle	68-72	







**M**onitoring wing was constituted as a tool of gauge the success of plantation activities. The dedicated and focused effort has rendered high credibility of to this wing. Plantation must be raised successfully since every plantation is a long term investment in both financial and environmental terms. Accountability needs to be made at every layer on the process; the necessary introspection is needed on the elements of failure if any that had crept into the system. Monitoring wing records information on survival, height as well as collar girth (5<sup>th</sup> year plantations only) on a sampling intensity that varies from 7.5% to 5%.

West Bengal Forest and Biodiversity Society with aid from the JICA had financed for the monitoring of 2018-19 (1<sup>st</sup> year) plantation programme spread over 2459.50 ha. in A2 (720.50 ha.), A3 (1709 ha.), B1 (30 ha.) and A4-2017-18 (1993 ha.) models. West Bengal Forest and Biodiversity Society with aid from the JICA had also financed for the monitoring of 2015-16 (4<sup>th</sup> Year) plantation programme spread over 2214.22 ha. in A1 (166 ha.), A2 (406 ha.), A3 (1642.22 ha.). Plantations were raised in different forest DMUs of South West Bengal and plantations have shown higher level of success with a weighted survival percentage of 98% for the 1<sup>st</sup> year & 87% for the 4<sup>th</sup> year.

I congratulate the participating DMUs led by the respective CCFs and DFOs for raising truly good plantations. I extend my sincere appreciation to the Monitoring team, led by Sri Apurba Sen, IFS, Divisional Forest Officer, Monitoring (South) Division & Head, Monitoring South DMU who has painstakingly undertaken the exercise against all odds with active encouragement from his senior officers such as Conservator of Forests and Chief Conservator of Forests Sri M.R. Bhatta, IFS, who through their critical appreciation of the activities helped DFO to fine tune this work.

Every Monitoring activity gives certain level of experience and ideas which would help us improve the process further.

Principal Chief Conservator of Forests,  
Research, Monitoring and Development, WB.





## Preface

## Preface

Periodic survey and monitoring of young plantations is an indispensable tool for gauging the success or otherwise of the forest plantations. Monitoring works undertaken under the Monitoring and Evaluation wing of Forest Directorate consists of observation and recording the status of survival percentage, height attained, whether working plan prescription are followed in case of first year old plantations. In future for fifth year old plantations breast height girth will also be taken in to consideration.

Monitoring South DMU has taken up the works of monitoring of 2018 i.e. 1<sup>st</sup> year old plantations and 2015 i.e. 4<sup>th</sup> year old plantation raised under JICA assisted WBFBCP project in 15 Forest DMUs of South Bengal during the year 2018-19 and 2015-16 and A4 2017-18. This reflects the level of protection and maintenance received by the forest plantation from the concerned forest staff. It is also indicative of the performance of the concerned Joint Forest Management Committee.

The presentation of the Draft Survey Monitoring Report of South West Bengal 2017-18 was done on 29<sup>th</sup> November, 2017 at Aranya Bhawan, Kolkata. Some of the suggestions received during the presentation are included in this report.

I would like to thank Sri Apurba Sen, IFS, Divisional Forest Officer, Monitoring (South) Division & Head, Monitoring South DMU along with their entire field and office staff for doing their job painstakingly. My thanks are also to Sri M.C. Biswas, IFS, Conservator of Forests, Monitoring Circle, West Bengal for his timely suggestions and guidance to officers and staff.



(M.R. Bhatta, IFS)  
Chief Conservator of Forests,  
Monitoring and Evaluation, WB.

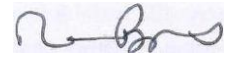


## Note of Conservator of Forests, Monitoring Circle, West Bengal

**M**onitoring of plantations created by the forest DMU is a needful mechanism to assess the quality of plantations. Survey Monitoring Reports 2018-19 in respect of plantations raised with funds from JICA-assisted WBFBC Project in South Bengal is now being published. Field work for Survey monitoring of those plantations were carried during October'2018 to March'2019.

As usual Draft copies of Monitoring Report 2018-19 pertaining to South Bengal was circulated to the concerned DMUs for getting feedback. Comments as received from some of the DMUs have been suitably incorporated in the present volume. Efforts have been made to reconcile the data and observations of DMUs.

In addition suggestions as received during the presentation of this monitoring report 2018-19 held at Aranya Bhawan, Kolkata on 29<sup>th</sup> November, 2017 have also been incorporated in this report. I appreciate the effort of Divisional Forest Officer, Monitoring (South) Division & Head, Monitoring South DMU in bringing out this report in time.



(M.C. Biswas, IFS)  
Conservator of Forests,  
Monitoring Circle, WB.





## Acknowledgment

The major function of Divisional Forest Officer & Head Monitoring South DMU and his team is to perform the following works with regards to the publication of this report-

1. Collection of preliminary data on plantation viz. location, model etc. of from WBFBCP.
2. Verify the data in field with the help of DMUs.
3. Conduct monitoring in the field through Range Officer & staff.
4. Compilation of the data after field work.
5. Sending the compiled data to the concerned DMUs to get their comment and also for if there is any correction.
6. Uploading the data after including the correction in the web site – [https://wbfbcp.org/jica/dash\\_board.php](https://wbfbcp.org/jica/dash_board.php)
7. Preparation of the draft report and submit the same to the Conservator of Forests, Monitoring Circle, West Bengal.
8. After inclusion the corrections and suggestions of the Conservator of Forests, Monitoring Circle, West Bengal, the draft report is sent to the appropriate authority of WBFBCP.
9. The suggestion and correction if any on the report from the higher authority of the monitoring wing and authority of WBFBCP is also included.
10. Finally publish the report.

In the above process I sincerely acknowledge the suggestion and guidance of Principal Chief Conservator of Forests, Research, Monitoring and Development, West Bengal and Addl. Principal Chief Conservator of Forests, Research & Monitoring, West Bengal.

I acknowledge the suggestion and continuous guidance of Chief Conservator of Forests, Monitoring and Evaluation, West Bengal and Conservator of Forests, Monitoring Circle, West Bengal.

I acknowledge the help and cooperation of Chief Conservator of Forests, Central Circle, West Bengal, Chief Conservator of Forests, Western Circle, West Bengal, Chief Conservator of Forests, South East Circle, West Bengal, Chief Conservator of Forests, South West Circle, West Bengal and Conservator of Forests, Parks & Gardens Circle, West Bengal.

I acknowledge the help, guidance and excellent cooperation from the officers of WBFBCP.

I am also thankful to the DMUs and their team at South Bengal.

I am also very thankful to Asstt. Divisional Forest Officer, Monitoring (South) Division for his very sincere effort and helping me in field work.

I am thankful to all the Range Officers and their staff who sincerely completed the field work within time frame in spite of several hindrances.

My special thanks goes to Accountant cum Cashier, Monitoring South DMU for arranging the designing and typing of this report and bearing me for carrying my order even in odd time.



Divisional Forest Officer,  
Monitoring (South) Division.

Dated, Kolkata, the 2<sup>nd</sup> May, 2018.





## Abbreviation

### For the names of the Divisional Management Unit (DMU)

Sl. No.	Abbreviation	Expanded
1	BNK(N)	Bankura (North)
2	BNK(S)	Bankura (South)
3	BIR	Birbhum
4	BDN	Burdwan
5	EFD	Extension Forestry Division, Purulia
6	DGP	Durgapur
7	HWH	Howrah Social Forestry
8	JHR	Jhargram
9	KNG(N)	Kangsabati (North)
10	KNG(S)	Kangsabati (South)
11	KGP	Kharagpur
12	MID	Midnapur
13	N & M	Nadia & Murshidabad
14	PNCT	Panchet
15	PMID	Purba Medinipur
16	PRL	Purulia
17	RPN	Rupnarayan

### Plantation Model

Sl. No.	Abbreviation	Expanded
1	A1	Plantation of High-yielding Eucalyptus Hybrid Clone
2	A2	Plantation of Sal and Associates in South Bengal
3	A3	Plantation of Quick growing Small Timber, fuel and fodder Species
4	A4	Enrichment of Degraded Sal Coppice Forests in SB through Coppice regeneration
5	B1	Strip Plantation
6	B2	Block Plantation

### Others

Sl. No.	Abbreviation	Expanded
1	Avg.	Average
3	CPD	Chief Project Director
4	Dev.	Development
5	Cat.	Category
6	DMU	Divisional Management Unit
7	Fin.	Financial
8	FMU	Field Management Unit
9	GT	Grand Total
10	H/L	Highest / Lowest
11	JICA	Japan International Co-operation Agency
12	PMC	Project Management Consultant
13	PMU	Project Management Unit
14	PS	Performance Score
15	SP	Survival Percentage
16	WBFBCP	West Bengal Forest and Biodiversity Conservation Project
17	WC	Working Circle
18	WPS	Weighted Performance Score
19	WSP	Weighted Survival Percentage
20	YOP	Year of Plantation

## Calendar of works of monitoring circle

(O.O. No. 05/PCCF/R&M/2M-4 dt. 6.11.06 read with Memo No. 165-176/PCCF-RMD/2M-4 dated 26.06.2009)

Date	Activity	Action
April-May	Placement of Fund of CF/Monitoring by PCCF/West Bengal in respect of Directorate Fund	CCF Finance
30th Sept	Regeneration Plan Map along with Plantation Journals (Compete up to date)	R.O.s of other Divisions to be directed by concerned DFOs to make these available to the R.O.s of Monitoring Divisions.
1 <sup>st</sup> Oct	Placement of Fund to DFO/Monitoring by territorial DFOs in respect of Non-Forest Dept [GoWB] funds [Civil Deposits]	Planting DFOs
15 <sup>th</sup> Oct	Starting Field Survey of Plantations	DFO/Monitoring (North) & DFO/Monitoring (South)
28 <sup>th</sup> Feb	Finishing Field Survey of Plantations raised with funds from Forest Dept.	Do
31 <sup>st</sup> Mar	Finishing Field Survey of Plantations raised with funds from civil deposits.	Do
10 <sup>th</sup> May	Circulation of survey data to DFOs for verification & comments.	Do
31 <sup>st</sup> May	Last date of receipt of comments from concerned DFOs/CFs.	DFOs / CFs
15 <sup>th</sup> Jul	Draft Monitoring Report (2 volumes)- Circulation for Comments to DFOs, CFs & CCFs.	DFO/Monitoring (N) & DFO/Monitoring (S)
31 <sup>st</sup> Jul	Last Date for Receipt of Comments	Other DFOs, CFs & CCFs
15 <sup>th</sup> Aug	Draft (Power Point) Presentations [2 No. for North & South Bengal] of CF/Monitoring.	CF/Monitoring to prepare & CCF/ME & SC to approve.
20 <sup>th</sup> Aug	(Power Point) Presentations in North Bengal by CF/Monitoring.	DFO/Monitoring (North) Divn. & CF/MC.
30 <sup>th</sup> Aug	(Power Point) Presentations in South Bengal by CF/Monitoring.	DFO/Monitoring (South) Divn. & CF/MC.
15 <sup>th</sup> Sep	Draft Monitoring Report (2 volumes)	Vetting by PCCF/RM&D through proper channel.
30 <sup>th</sup> Sep	Final Report (2 volumes) – Publication and Distribution.	DFO/Monitoring (N) & DFO/Monitoring (S)
15 <sup>th</sup> Nov	Draft State Monitoring Report (1 volume)	CF/Monitoring to submit to CCF/ME&SC & PCCF/RMD
30 <sup>th</sup> Nov	Final State Monitoring Report (1 volume) Publication and Distribution	CF/Monitoring

## Introduction

Monitoring is an ongoing activity which analyses the progress of planned activity. Evaluation assesses the efficiency, impact relevance and sustainability of the project's action. Monitoring and evaluation also helps to improve the planning of a project. Monitoring and evaluation also signifies not only the quality of plantation but also to assess the parameters followed in the prescription of the plantation.

The main objective of the monitoring are

- To monitor physically and document the status of plantations under the project West Bengal Forest Bio-diversity Conservation by means of random sampling method.
- To evaluate the some activities of steps of creation of plantation, survival & health of plantations emphasizing on the parameter of height for 1<sup>st</sup> and 3<sup>rd</sup> year plantation & height and GBH for 5th year plantation.

During the Financial Year 2018-19, Monitoring (South) DMU has executed the Survey Monitoring works for the plantations under the project WBFBC created during the year 2018-198, 2015-16 & 2017-18 (A4) as stated below

Year	Model	Total Area in Hectares	Area monitored in Hectares
2018-19	1 <sup>st</sup> - A2, A3, B1	2459.50	2459.50
2017-18	2 <sup>nd</sup> - A4	1993	1993
2015-16	4 <sup>th</sup> -A1, A2, A3	2214.22	2214.22
<b>Total</b>		<b>6666.72</b>	<b>6666.72</b>

## Monitoring Methodology

The analysis has been carried out and result achieved on the basis of data recorded in the prescribed Survey Monitoring data sheets.

The individual plantation data in a compiled form was circulated to the concerned Divisional Management Unit and their respective Conservator of Forests/Chief Conservator of Forests in advance for checking of data & comments. This also helps them to replace the casualties & take other remedial measures targeted towards improvement of quality of plantations. The feedback received has been considered in the compilation of draft monitoring report.

Three major parameters viz. survival percentage, height and girth at breast height (only for 5<sup>th</sup> year plantation) of seedling are taken into consideration for the process.

The other parameters viz. maintenance of plantation journal, Sources of seed for raising nursery, time schedule of activity of creation stage & frequency of field visit of the supervising authority etc are also considered in performance scoring of the plantation, the detail of which is given in the new monitoring methodology.

The above parameters are measured in the field in individual patch of the plantation by random sampling method. The procedure is given below.

For the purpose of execution of survey & monitoring works the Statistical random sampling method is in practice.

The sampling intensity and size of sample plot for different ages of plantation is given below-

Sl. No.	Age of plantation	Sampling intensity	Size of sample plot	Data recording
1)	1 <sup>st</sup> year	7.5% of the area	50mt.X50mt.	No. of seedling species wise & height class wise.
2)	3 <sup>rd</sup> year	5% of the area	50mt.X50mt.	No. of seedling species wise & height class wise.
3)	5 <sup>th</sup> year	5% of the area	50mt.X50mt.	No. of seedling species wise, height class wise & girth at breast height. .

### Pre-survey Works

1. Copies of regeneration maps along with plantation journals are collected from the respective DMUs.
2. Location, area, spacing of planting scheme etc. are also recorded as check list.
3. A grid line as per scale is laid over the map with quadrates of 50m x 50m & each grid is serially numbered.
4. Numbers of Sample plots (grids) are chosen randomly using the statistical random number table.

### Field works

1. The selected sample plots are identified in the field.
2. Boundary corners are clearly marked with raised earthen mound topped with painted peg and geo-location is recorded.
3. Total enumeration is carried out species wise and in respect of height class intervals and also girth at breast height for the 5<sup>th</sup> year plantation.
4. The area of plantation is checked in the field by traversing with GPS.
5. At the time of Survey & Monitoring, the staff of respective FMU remains present & put their initials on the data sheets as the sign of authentication.

### Calculation of Survival percentage

As per approved spacing, total number of seedlings that should be present in those plots is calculated. Survival percentage is found out as the ratio of actual number of seedlings to the prescribed number.

## Category wise Survival percentage of plantation

According to the survival Percentage the plantations are classified as follows-

Year of plantation	Category A	Category B	Category C	Category D
1 <sup>st</sup> year	SP : 90% & above	SP : 89 – 75%	SP : 74 – 50 %	SP : < 50%
3 <sup>rd</sup> year	SP : 75% & above	SP :74 – 60%	SP : 59 – 40 %	SP : < 40%
5 <sup>th</sup> year	SP : 50% & above	SP :49 – 40%	SP : 39 – 30 %	SP : < 30%

In the earlier method of plantation monitoring emphasis was given only on the weighted survival percentage for assessment of plantation quality. Although the data on height and girth at breast height were recorded but little use were made of those data in analysis of the quality of the plantation. The present adopted method of plantation monitoring emphasizes on the different parameters which are prerequisites for raising a good quality plantation. Ten such parameters have been identified. These parameters have been broadly classified into following three categories.

1. **Conformity to the existing rules, provisions and guidelines.**
2. **Execution of Plantation works in the field.**
3. **Performance of the plantation.**

Each category has been assigned a score which varies with the age of the plantation, but the total score is kept 100 for all age category of the plantation. The total score of each category is sub divided among the parameters grouped under each category. The detail of parameter in each group is given below-

- **Conformity to the existing rules, provisions and guidelines consists of four parameters-**
  1. Legal status of land.
  2. Source of seed & status of nursery.
  3. Maintenance of plantation journal, regeneration plan.
  4. Planting pattern.
- **Execution of Plantation works in the field consists of four parameters-**
  1. Site quality & choice of species.
  2. Mechanism to protect plantation.
  3. Timely completion of prescribed plantation activities.
  4. Inspection intensity by supervising officers.
- **Performance of the plantation consists of two parameters-**
  1. Average survival percentage of seedling under different schemes during 1st, 3rd, 5th year.
  2. Reflection of general health of plantation by average height of seedlings under different scheme of 1<sup>st</sup>, 3<sup>rd</sup>& 5<sup>th</sup> year of plantation. For the 5<sup>th</sup> year old plantation another growth parameter which is girth at breast height (GBH) is recorded as a measure of performance.

Each parameter is assigned a maximum score which diminishes with the gradual non achievement of the definite parameters and reflected in score. The category and parameters have been standardized separately for 1<sup>st</sup>, 3<sup>rd</sup>& 5<sup>th</sup> year old plantation with year (age) specific assigned score.



The detail of score for each category is given below-

### Scoring index for 1st year old plantation

Broad category	Detail of parameters	Score
<b>Conformity to the existing rules, provisions and guidelines.</b>	Legal status of the land.	3
	Source of seed and status of nursery.	3
	Maintenance of plantation journal along with regeneration map.	3
	Planting pattern.	3
<b>Execution of Plantation works in the field.</b>	Site quality & choice of species.	5
	Mechanism to protect plantation.	5
	Timely completion of prescribed plantation activities.	5
	Inspection intensity by supervising officers.	5
<b>Performance of the plantation.</b>	Average survival percentage	51
	General health of plantation	17
<b>Total</b>		<b>100</b>




### Scoring index for 3rd year old plantation

Sl. No.	Detail of parameters.	Score
1	Maintenance of plantation journal along with regeneration map	5
2	Mechanism to protect plantation	5
3	Infilling with big size seedling	10
4	Timely completion of prescribed plantation activity	5
5	Inspection intensity by supervising officers	5
6	Average Survival Percentage	51
7	General health of the seedling (Height)	19
<b>Total</b>		<b>100</b>

### Scoring index for 5th year old plantation

Sl. No.	Detail of parameters.	Score
1	Maintenance of plantation journal along with regeneration map	3
2	Mechanism to protect plantation	5
3	Inspection intensity by supervising officers	5
4	Average Survival Percentage	56
5	General health of the seedling (Height)	21
6	Average GBH of seedling	10
<b>Total</b>		<b>100</b>

### Table for colour code

Grade	Score (1 <sup>st</sup> )	Score (3 <sup>rd</sup> )	Score (5 <sup>th</sup> )	Color code
Excellent	>85	>75	>60	
Very Good	71 – 85	61 – 75	45 – 60	
Good	46 – 70	46 – 60	30 – 44	
Average	31 – 45	31 – 45	15 – 29	
Poor	=<30	=<30	<15	

As desired by authority of WBFBCP the SWC works in the form of Contour Trench is also monitored. The running meter is measured in the sample plot and average running meter of all sample plot is multiplied by 4 to get the quantum of SWC work per hectare.

The scoring system of 3<sup>rd</sup> year is taken in case of 4<sup>th</sup> year plantation.

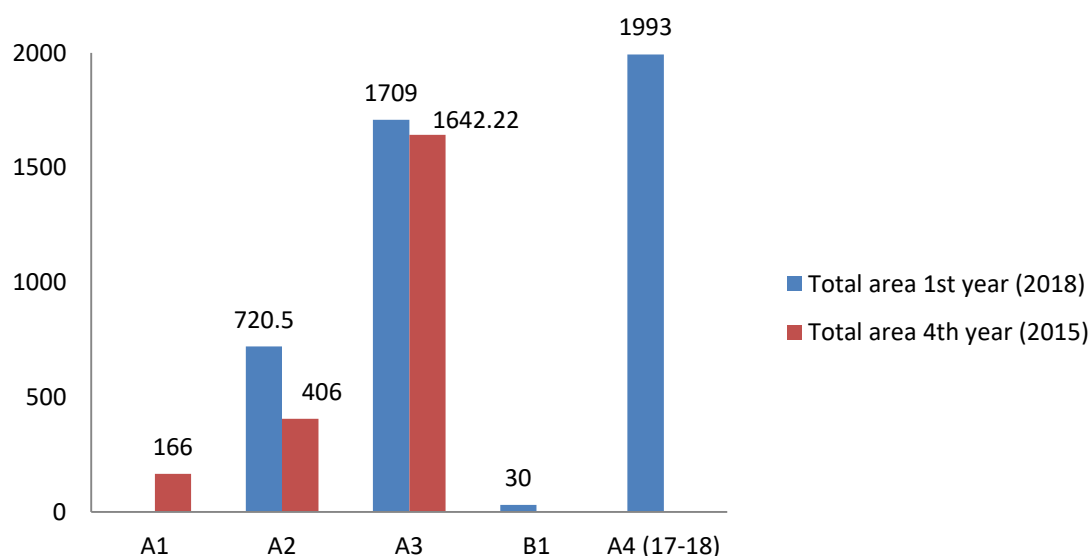
## Area statement of 2018 & 2015 plantation

Area in Ha.

Serial Number	Model of Plantation	1 <sup>st</sup> Year (2018)		4 <sup>th</sup> Year (2015)		Grand Total	
		Total area Reported	Area Monitored	Total area Reported	Area Monitored	Total area Reported	Area Monitored
1	A1	0	0	166	166	166	166
2	A2	720.5	720.5	406	406	1126.5	1126.5
3	A3	1709	1709	1642.22	1642.22	3351.22	3351.22
5	B1	30	30	0	0	30	30
4	A4 (17-18)	1993	1993	0	0	1993	1993
<b>Total</b>		<b>4452.5</b>	<b>4452.5</b>	<b>2214.22</b>	<b>2214.22</b>	<b>6666.72</b>	<b>6666.72</b>

Table-1

### Model wise area monitored



### Abstract

- Total plantation area assigned for monitoring during the FY 2018-19 is 6666.72ha for 1<sup>st</sup> year and 4<sup>th</sup> year plantation.
- Out of the 6666.72ha. 2459.50ha. plantation was raised under the model A2, A3& B1 during the year 2018-19.
- Out of the 6666.72ha. 1993.00 ha. plantation was raised under the model A4.
- A total quantum of 1709 ha. of plantation under A3 model i.e. Plantation of Quick growing Small Timber, fuel and fodder Species was raised, which is 69.48% of the total plantation, during 2018-19.
- A2 model plantation which is plantation of Sal and Associates in South Bengal is 720.50 ha. which is 29.29% of the total plantation raised during 2018-19.
- During 2015-16, 2214.22 ha. Plantation was raised under the model A1 (166 ha.), A2 (406 ha.) & A3 (1642.22 ha.)

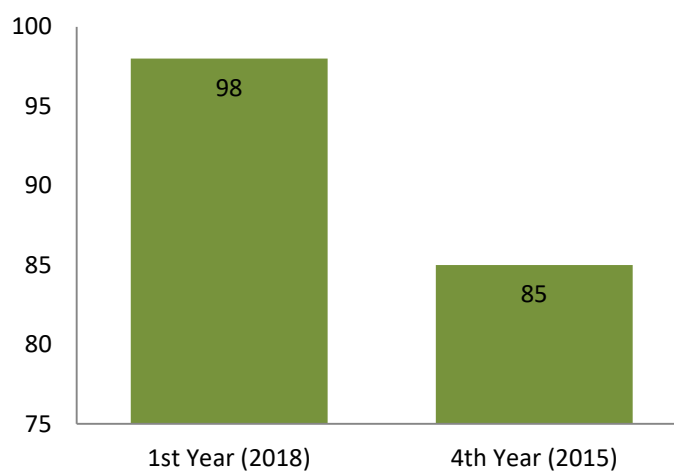
## Overall WSP (1<sup>st</sup> & 4<sup>th</sup> year plantation)

Area in ha.

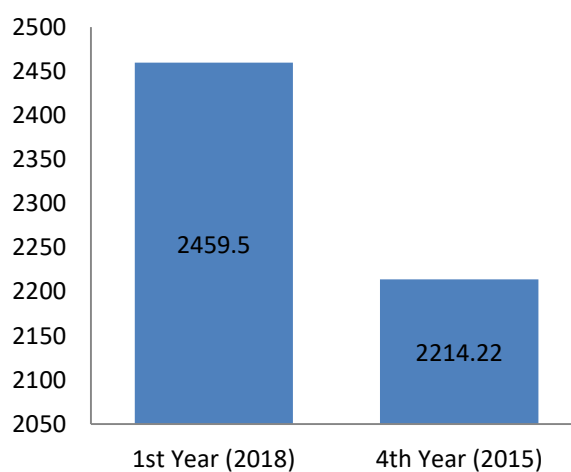
Plantation Year	Area	WSP except A4	Category	Year of Monitoring
1 <sup>st</sup> Year(2018)	2459.50	98	A	2018-19
4 <sup>th</sup> Year(2015)	2214.22	85	A	

Table-2

### Overall WSP



### Area (1st & 4th year)

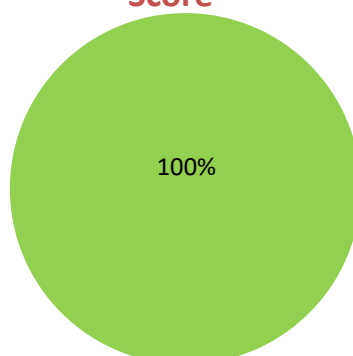


## DMU wise WSP & WPS (1<sup>st</sup> year plantation, year-2018)

DMU	A2			A3			A4,17-18		B1			Total Area(Ha)	DMU wise WSP except a4	DMU wise WPS Except A4
	Area	WSP	WPS	Area	WSP	WPS	Area	WSP	Area	WSP	WPS			
Bankura (N)	50	100	95	200	99	89	265	100				515	99	91
Bankura (S)	53	99	97	190	100	91	310	100				553	100	92
Panchet	125	99	96	287	100	94						412	100	95
Howrah														
Birbhum														
Burdwan	30	99	87	100	99	83	178	100				308	99	84
Durgapur	10	100	86	40	97	81						50	98	82
N & M									20	99	91	20	99	91
EFD									10	100	92	10	100	92
KNG (N)	20	100	88	120	100	87						140	100	87
KNG (S)	25	100	90	100	100	90						125	100	90
Purulia	48	99	90	176	99	82	260	100				484	99	84
Jhargram	20	98	89	46	96	76	270	100				336	97	80
KGP	20.5	100	92	83	99	84	210	100				313.5	99	85
Midnapore	160	100	84	232	98	79	350	100				742	99	81
Rupnarayan	159	98	80	135	99	88	150	100				444	99	83
<b>Total</b>	<b>720.5</b>	<b>99</b>	<b>88</b>	<b>1709</b>	<b>99</b>	<b>87</b>	<b>1993</b>	<b>100</b>	<b>30</b>	<b>99</b>	<b>91</b>	<b>4452.5</b>	<b>99</b>	<b>87</b>

Table-3

### Category of Plantation Based on Performance Score



### Abstract

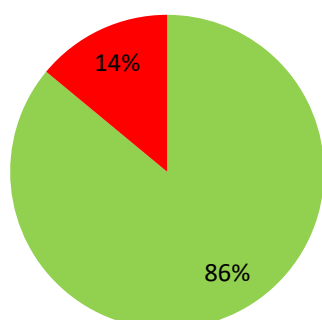
The quantum of plantation come under green zone is 100% which is based on weighted performance score.

## DMU wise WSP & WPS (4<sup>th</sup> year plantation, year-2015)

DMU	A1			A2			A3			Total Area(Ha)	DMU wise WSP	DMU wise WPS
	Area	WSP	WPS	Area	WSP	WPS	Area	WSP	WPS			
Bankura (N)	20	79	45	50	91	76	320.5	90	64	390.5	89	65
Bankura (S)	15	90	68	15	98	72	274.22	90	62	304.22	91	62
Panchet	10	92	66	80	84	60	431	90	62	521	89	62
Howrah												
Birbhum	5	95	83	20	74	56	70	85	61	95	83	61
Burdwan	15	96	97	30	92	93	141.5	89	72	186.5	90	77
Durgapur	5	98	100	25	92	93	20	87	77	50	91	87
N & M												
EFD												
KNG (N)	40	87	66	80	42	34				120	57	44
KNG (S)							105	90	81	105	90	81
Purulia												
Jhargram												
KGP	31	85	54	31	86	74	50	9	67	112	88	66
Midnapore	15	97	76	100	54	28	80	79	48	195	68	40
Rupnarayan	50	93	67	15	79	60	70	86	57	135	88	61
<b>Total</b>	<b>206</b>	<b>90</b>	<b>67</b>	<b>446</b>	<b>72</b>	<b>55</b>	<b>1562.2</b>	<b>86</b>	<b>64</b>	<b>2214.22</b>	<b>85</b>	<b>62</b>

Table-4

### Category of Plantation Based on Performance Score



### Abstract

The quantum of plantation come under green zone is 86% which is based on weighted performance score.

The quantum of plantation come under red zone is 14% which is based on weighted performance score.

The best performance is shown by KNG(S)DMU and scored 81.



## Model & category wise 1<sup>st</sup> year & 4<sup>th</sup> year plantation based on WSP

### 1<sup>st</sup> year 2018

Area in ha.

Model	Total area monitored	Category-A: SP-90% and above		Category-B: SP 89% - 75%		Category-C: SP 74% - 50%		Category-D: SP < 50%	
		Area	% area	Area	% area	Area	% area	Area	% area
A2	720.5	720.5	100	-	-	-	-	-	-
A3	1709	1709	100	-	-	-	-	-	-
B1	30	30	100	-	-	-	-	-	-
<b>Total</b>	<b>2459.5</b>	<b>2459.5</b>	<b>100</b>	<b>-</b>	<b>-</b>	<b>-</b>	<b>-</b>	<b>-</b>	<b>-</b>

Table-5

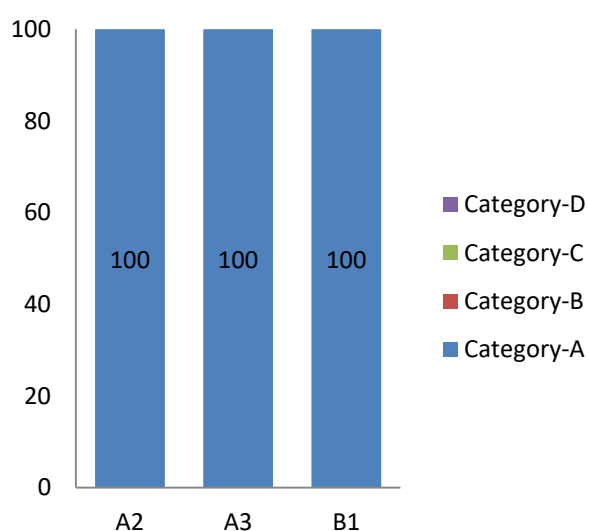
### 4<sup>th</sup> year 2015

Area in ha.

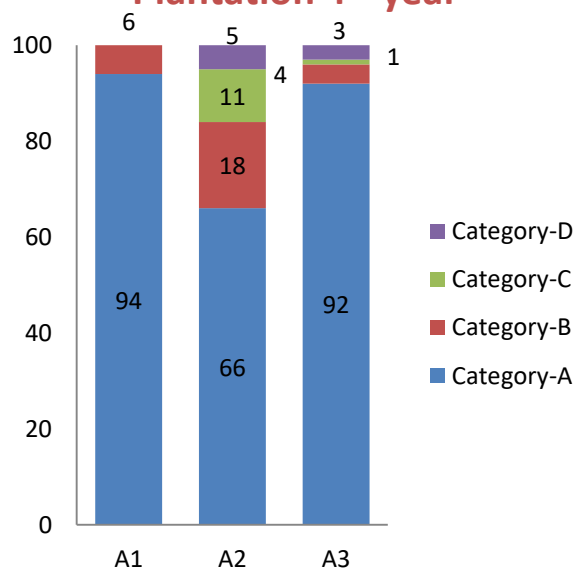
Model	Total area monitored	Category-A: SP-75% and above		Category-B: SP 74% - 60%		Category-C: SP 59% - 40%		Category-D: SP < 40%	
		Area	% area	Area	% area	Area	% area	Area	% area
A1	166	156	94	10	6				
A2	406	266	66	75	18	45	11	20	5
A3	1642.22	1513.22	92	69	4	15	1	45	3
<b>Total</b>	<b>2214.22</b>	<b>1935.22</b>	<b>87</b>	<b>154</b>	<b>7</b>	<b>60</b>	<b>3</b>	<b>65</b>	<b>3</b>

Table-6

### Model wise Category of Plantation 1<sup>st</sup> year



### Model wise Category of Plantation 4<sup>th</sup> year



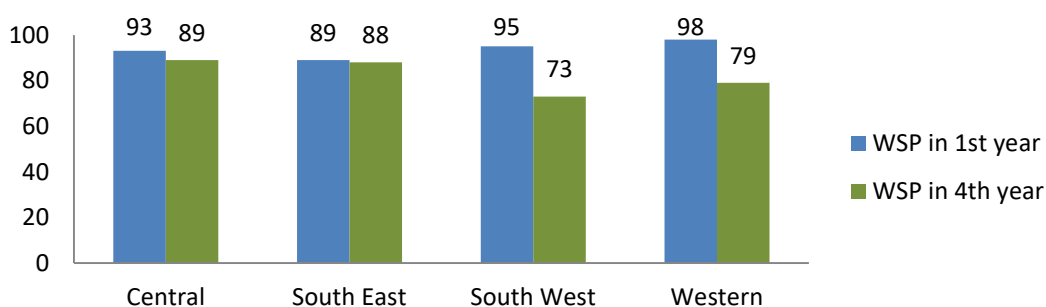
## Change of WSP (WSP in 1<sup>st</sup> year and 4<sup>th</sup> year of 2015 plantation)

Area in Ha.& height in cm.

SL No.	Circle	DMU	Model	WSP in 1 <sup>st</sup> year monitoring (2015)	WSP in 4 <sup>th</sup> year monitoring (2018)	Change of WSP
1	Central	Bankura (N)	A1	94	79	-15
2	Central	Bankura (N)	A2	93	91	-2
3	Central	Bankura (N)	A3	95	90	-5
4	Central	Bankura (S)	A1	85	90	5
5	Central	Bankura (S)	A2	86	98	12
6	Central	Bankura (S)	A3	92	90	-2
7	Central	Panchet	A1	96	92	-4
8	Central	Panchet	A2	97	84	-13
9	Central	Panchet	A3	93	90	-3
Total Central Circle				93	89	-4
10	South-East	Birbhum	A1	95	95	0
11	South-East	Birbhum	A2	31	74	43
12	South-East	Birbhum	A3	93	85	-8
13	South-East	Burdwan	A1	96	96	0
14	South-East	Burdwan	A2	95	92	-3
15	South-East	Burdwan	A3	92	89	-3
16	South-East	Durgapur	A1	93	98	5
17	South-East	Durgapur	A2	96	92	-4
18	South-East	Durgapur	A3	91	87	-4
Total South-East Circle				94	91	-3
19	South-West	KNG(N)	A2	98	87	-11
20	South-West	KNG(N)	A3	97	42	-55
21	South-West	KNG(S)	A3	92	90	-2
Total South-West Circle				95	73	-22
22	Western	Kharagpur	A1	99	85	-14
23	Western	Kharagpur	A2	100	86	-14
24	Western	Kharagpur	A3	100	91	-9
25	Western	Midinipur	A1	99	97	-2
26	Western	Midinipur	A2	98	54	-44
27	Western	Midinipur	A3	97	79	-18
28	Western	Rupnarayan	A1	99	93	-6
29	Western	Rupnarayan	A2	99	79	-20
30	Western	Rupnarayan	A3	99	86	-13
Total Western Circle				98	79	-19
Grand Total				94	85	-9

Table -7

### Circle wise change of weighted survival percentage, 1<sup>st</sup> year to 4<sup>th</sup> year



## Model wise representation

1<sup>st</sup> year (2018), 4<sup>th</sup> year (2015) plantation

**Model-A1**

Area in ha.& height in cm.

DMU	1 <sup>st</sup> year				4 <sup>th</sup> year			
	Area	WSP	Height	SD	Area	WSP	Height	SD
Bankura (North)	-	-	-	-	20	79	516	-
Bankura (South)	-	-	-	-	15	90	517	-
Birbhum	-	-	-	-	5	95	421	-
Burdwan	-	-	-	-	15	96	426	-
Durgapur	-	-	-	-	5	98	500	-
Kharagpur	-	-	-	-	31	85	284.5	-
Medinipur	-	-	-	-	15	97	255	-
Panchet	-	-	-	-	10	92	523	-
Rupnarayan	-	-	-	-	50	93	259	-
<b>Total</b>	-	-	-	-	<b>166</b>	<b>90</b>	<b>362</b>	-

Table-8

1<sup>st</sup> year (2018), 4<sup>th</sup> year (2015) plantation

**Model-A2**

Area in ha.& height in cm.

DMU	1 <sup>st</sup> year				4 <sup>th</sup> year			
	Area	WSP	Height	SD	Area	WSP	Height	SD
Bankura (North)	50	100	81	-	50	91	206	-
Bankura (South)	53	99	79	-	15	98	253	-
Birbhum	-	-	-	-	20	74	81	-
Burdwan	30	99	59	-	30	92	183	-
Durgapur	10	100	40	-	25	92	139	-
Jhargram	20	98	72	-				-
Kharagpur	20.5	100	77	-	31	86	209	-
KNG(N)	20	100	50	-	40	87	166	-
KNG(S)	25	100	54	-				-
Medinipur	160	100	58	-	100	54	80	-
Panchet	125	99	82	-	80	84	227	-
Purulia	48	99	67	-				-
Rupnarayan	159	98	56	-	15	79	161	-
<b>Total</b>	<b>721</b>	<b>99</b>	<b>65</b>	-	<b>406</b>	<b>79</b>	<b>166</b>	-

Table-9

**1<sup>st</sup> year (2018), 4<sup>th</sup> year (2015) plantation****Model-A3**

Area in ha. &amp; height in cm.

DMU	1 <sup>st</sup> year				4 <sup>th</sup> year			
	Area	WSP	Height	SD	Area	WSP	Height	SD
Bankura (North)	200	99	105	-	320.5	90	410	-
Bankura (South)	190	100	102	-	274.22	90	386	-
Birbhum	-	-	-	-	70	85	237	-
Burdwan	100	99	82	-	141.5	89	316	-
Durgapur	40	97	86	-	20	87	271	-
Jhargram	46	96	90	-				-
Kharagpur	83	99	91	-	50	91	313	-
KNG(N)	120	100	79	-	80	42	335	-
KNG(S)	100	100	95	-	105	90	395	-
Medinipur	232	98	71	-	80	79	284	-
Panchet	287	100	122	-	431	90	424	-
Purulia	176	99	72	-				-
Rupnarayan	135	99	109	-	70	86	348	-
<b>Total</b>	<b>1709</b>	<b>99</b>	<b>94</b>	<b>-</b>	<b>1642.22</b>	<b>87</b>	<b>374</b>	<b>-</b>

Table-10

**1<sup>st</sup> year (2018), 4<sup>th</sup> year (2015) plantation****Model-B1**

Area in ha. &amp; height in cm.

DMU	1 <sup>st</sup> year				4 <sup>th</sup> year			
	Area	WSP	Height	SD	Area	WSP	Height	SD
EFD	10	100	95	-	-	-	-	-
N & M	20	99	111	-	-	-	-	-
<b>Total</b>	<b>30</b>	<b>100</b>	<b>107</b>	<b>-</b>	<b>-</b>	<b>-</b>	<b>-</b>	<b>-</b>

Table-12

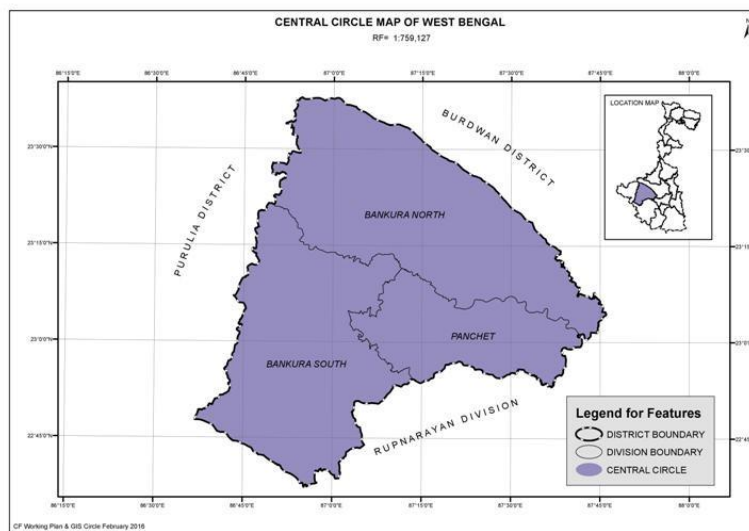
**1<sup>st</sup> year (2017-18) plantation****Model-A4**

Area in ha. &amp; height in cm.

DMU	1 <sup>st</sup> year			
	Area	WSP	Height	SD
Bankura (North)	265	100	507	-
Bankura (South)	310	100	729	-
Burdwan	178	100	289	-
Jhargram	270	100	284	-
Kharagpur	210	100	313	-
Medinipur	350	100	302	-
Purulia	260	100	280	-
Rupnarayan	150	100	297	-
<b>Total</b>	<b>1993</b>	<b>100</b>	<b>376</b>	<b>-</b>

Table-13

## Detail monitoring report of Central circle



Scheme- A4 (2017-18), Division- Bankura (North), Range- Sonamukhi, Beat- Manikbazar, Location- Manikbazar, Area- 40 ha., Year- 2017-18

### DMU

- Bankura North
- Bankura South
- Panchet

### Model

- A1
- A2
- A3
- A4 (2017-18)



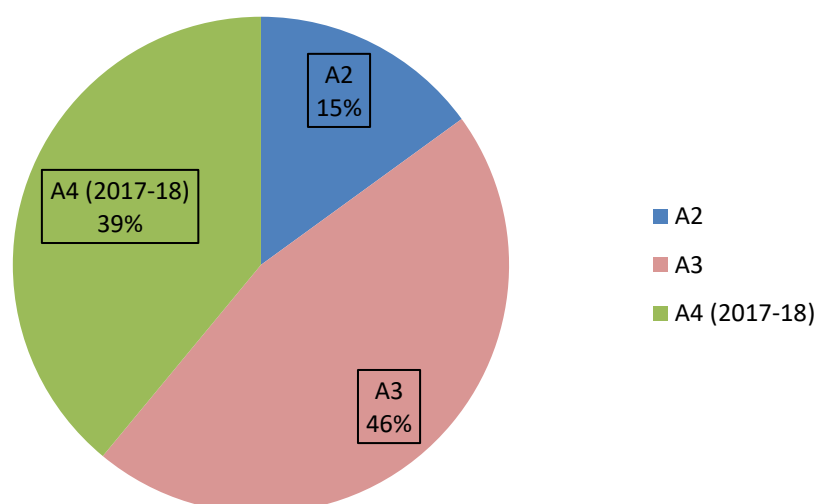
## 1<sup>st</sup> year (2018 Plantation) - DMU wise performance

Area in Ha.& height in cm.

DMU	A2				A3				A4 (2017-18)			Total Area	DMU wise WSP Except A4	DMU wise Average WPS Except A4	DMU wise Average Height Except A4
	Area	WSP	WPS	Height	Area	WSP	WPS	Height	Area	WSP	Height				
Bankura (N)	50	100	95	81	200	99	89	105	265	100	507	515	99	91	102
Bankura (S)	53	99	97	79	190	100	91	102	310	100	729	553	100	92	94
Panchet	125	99	96	82	287	100	94	122				412	100	95	107
<b>Total</b>	<b>228</b>	<b>100</b>	<b>96</b>	<b>82</b>	<b>677</b>	<b>99</b>	<b>92</b>	<b>112</b>	<b>575</b>	<b>100</b>	<b>610</b>	<b>1480</b>	<b>99</b>	<b>93</b>	<b>102</b>

Table -14

## Model wise area share



## Abstract

- Total area of the A2 model is 228 hectare. All the 3 DMUs have maintained a WSP 99% and above. The average WPS is 96. The average height of the plantation is 82 cm.
- The area coverage of A3 model plantation is 677 hectare. In this model Bankura (South) and Panchet Division achieved 100% WSP. The average WPS of this model is 92 and average height 112.
- Total area of the A4 (2017-18) model is 575 hectare. The average height of the plantation is 610 cm.

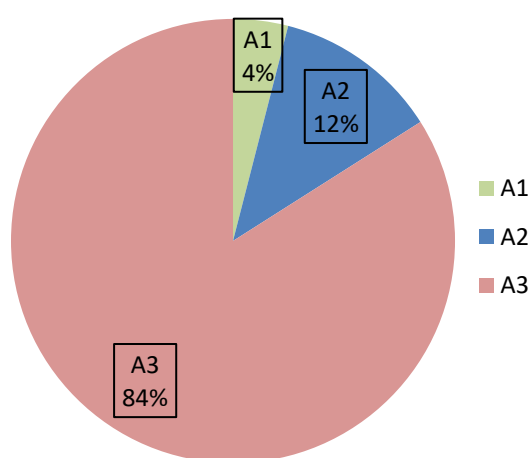
## 4<sup>th</sup> year (2015 Plantation)-DMU wise performance

Area in Ha.& height in cm.

DMU	A1				A2				A3				Total Area	DMU wise WSP	DMU wise WPS	DMU wise Average Height
	Area	WSP	WPS	Height	Area	WSP	WPS	Height	Area	WSP	WPS	Height				
Bankura (N)	20	79	45	516	50	91	76	206	320.5	90	64	410	390.5	89	65	380
Bankura (S)	15	90	68	517	15	98	72	253	274.22	90	62	386	304.22	91	62	386
Panchet	10	92	66	523	80	84	60	227	431	90	62	424	521	89	62	388
<b>Total</b>	<b>45</b>	<b>86</b>	<b>57</b>	<b>519</b>	<b>145</b>	<b>88</b>	<b>67</b>	<b>221</b>	<b>1025.72</b>	<b>90</b>	<b>63</b>	<b>411</b>	<b>1215.72</b>	<b>89</b>	<b>63</b>	<b>385</b>

Table -15

## Model wise area share



## Abstract

- A1 model was taken up by all 3 DMUs over the area of 45 ha. and maintained excellent performance with average WSP 86, average WPS 57 and average height 519.
- 145 ha plantation raised in A2 model with average WSP 88, WPS 67 and height 221.
- The area coverage of A3 model plantation is 1025.72 hectare. In this model all divisions achieved 90% WSP. The average WPS of this model is 63 and average height 411.

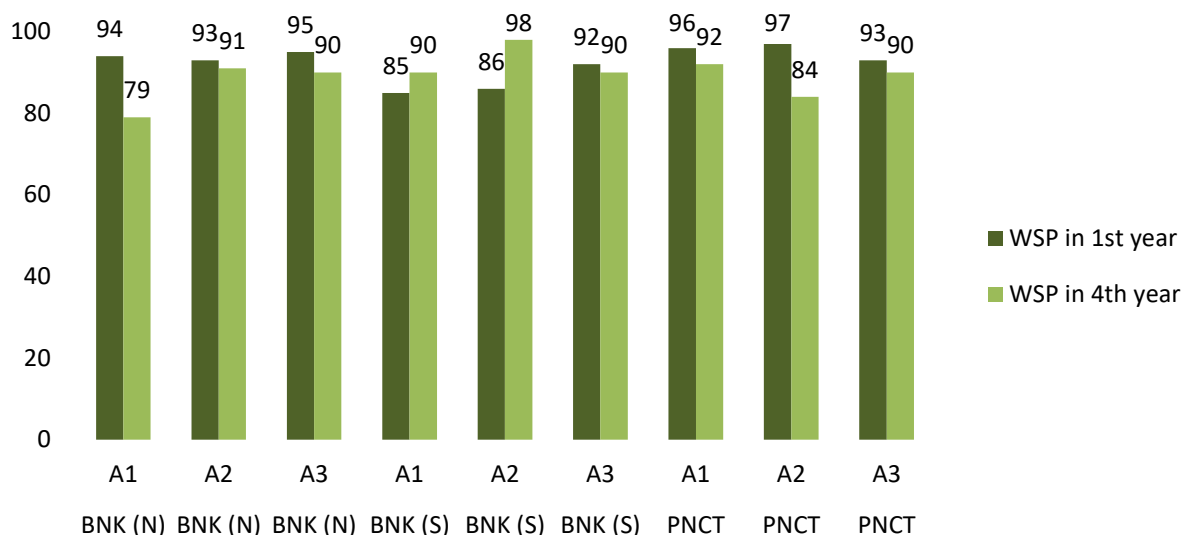
## WSP over the Years

WSP in 1<sup>st</sup> & 4<sup>th</sup> Year (2015 plantation over 4 years)

Area in Ha.& height in cm.

SL No.	DMU	Model	WSP in 1 <sup>st</sup> year monitoring (2015)	WSP in 4 <sup>th</sup> year monitoring (2018)	Change of WSP
1	Bankura (N)	A1	94	79	-15
2	Bankura (N)	A2	93	91	-2
3	Bankura (N)	A3	95	90	-5
4	Bankura (S)	A1	85	90	5
5	Bankura (S)	A2	86	98	12
6	Bankura (S)	A3	92	90	-2
7	Panchet	A1	96	92	-4
8	Panchet	A2	97	84	-13
9	Panchet	A3	93	90	-3
<b>Total Central Circle</b>			<b>93</b>	<b>89</b>	<b>-4</b>

Table- 16



### Category wise weighted survival% (except A4)- 1<sup>st</sup> year (2018 Plantation)

Area in Ha.& height in cm.

DMU	Total area monitored	Category-A: SP-90% and above		Category-B: SP- 89% - 75%		Category-C: SP 74% - 50%		Category-D: SP < 50%	
		Area	% area	Area	% area	Area	% area	Area	% area
Bankura (N)	250	250	100	-	-	-	-	-	-
Bankura (S)	243	243	100	-	-	-	-	-	-
Panchet	412	412	100	-	-	-	-	-	-
<b>Central Circle</b>	<b>905</b>	<b>905</b>	<b>100</b>	<b>-</b>	<b>-</b>	<b>-</b>	<b>-</b>	<b>-</b>	<b>-</b>

Table- 17

### Category wise weighted survival%- 4<sup>th</sup> year (2015 Plantation)

Area in Ha.& height in cm.

DMU	Total area monitored	Category-A: SP- 75% and above		Category-B: SP-74% - 60%		Category-C: SP 59% - 40%		Category-D: SP < 40%	
		Area	% area	Area	% area	Area	% area	Area	% area
Bankura (N)	390.5	390.5	100	-	-	-	-	-	-
Bankura (S)	304.22	304.22	100	-	-	-	-	-	-
Panchet	521	487	93	24	5	10	2	-	-
<b>Central Circle</b>	<b>1215.72</b>	<b>1181.7</b>	<b>97</b>	<b>24</b>	<b>2</b>	<b>10</b>	<b>1</b>	<b>-</b>	<b>-</b>

Table- 18

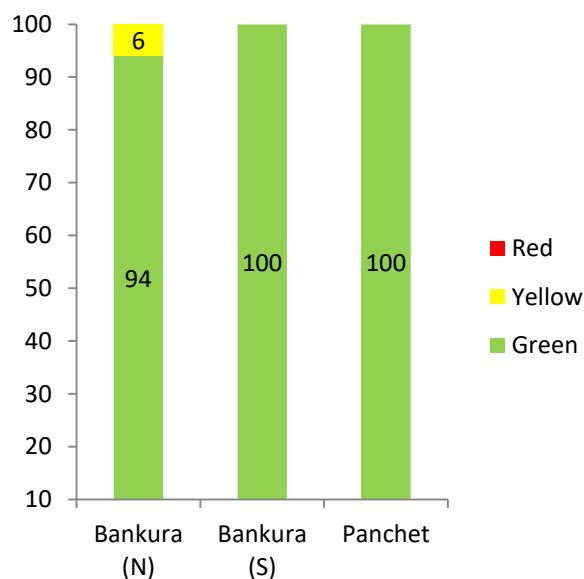
### Circle performance at a glance except A4 (Performance Score, for 1<sup>st</sup> year, 2018)

Area in Ha.& height in cm.

DMU	Total area monitored	Category-A: PS-> 85		Category-B: PS- 71-85		Category-C: PS- 46-70		Category-D: PS-31-45		Category-E: PS- =<30	
		Area	% area	Area	% area	Area	% area	Area	% area	Area	% area
Bankura (N)	250	220	88	15	6	15	6	-	-	-	-
Bankura (S)	243	231	95	12	5	-	-	-	-	-	-
Panchet	412	412	100	-	-	-	-	-	-	-	-
<b>Central Circle</b>	<b>905</b>	<b>863</b>	<b>95</b>	<b>27</b>	<b>3</b>	<b>15</b>	<b>2</b>	<b>-</b>	<b>-</b>	<b>-</b>	<b>-</b>

Table-19

### Circle Performance (PS)



### Abstract

- In this circle out of 905 hectare 890 hectare of plantation comes under green zone, and 863 hectare of plantation scored more than 85.
- 15 hectare which is 2% of total plantation comes under yellow zone.
- No. plantation in this circle comes under red zone.
- 88% of plantation of Bankura (North) DMU scored more than 85.
- 95% of plantation of Bankura (South) DMU scored more than 85.
- 100% of plantation of Panchet DMU scored more than 85.

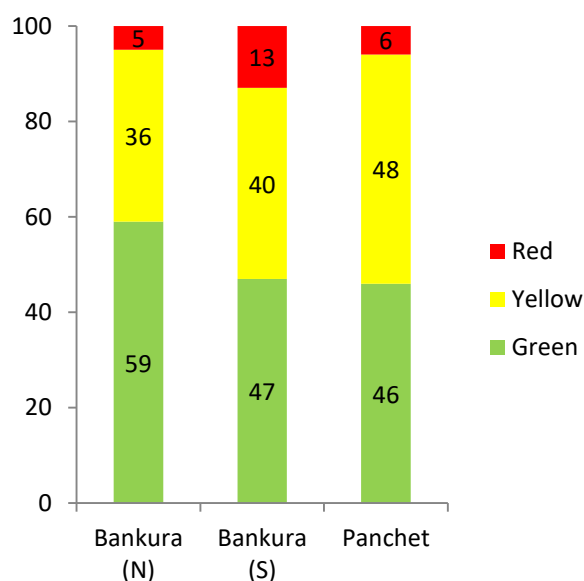
### Circle performance at a glance (Performance Score, for 4<sup>th</sup> year, 2015)

Area in Ha.& height in cm.

DMU	Total area monitored	Category-A: PS-> 75		Category-B: PS- 61-75		Category-C: PS- 46-60		Category-D: PS- 31-45		Category-E: PS- =<30	
		Area	% area	Area	% area	Area	% area	Area	% area	Area	% area
Bankura (N)	390.5	101	26	128	33	141.5	36	20	5		
Bankura (S)	304.22	64	21	80.22	26	120	40	40	13		
Panchet	521	66	13	170	33	251	48	20	4	14	2
<b>Central Circle</b>	<b>1215.72</b>	<b>231</b>	<b>19</b>	<b>378.22</b>	<b>31</b>	<b>512.5</b>	<b>42</b>	<b>80</b>	<b>7</b>	<b>14</b>	<b>1</b>

Table-20

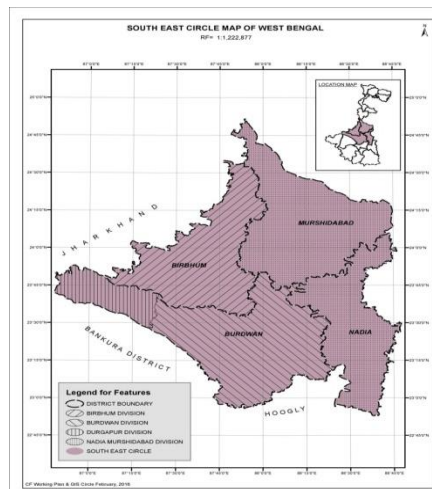
### Circle Performance (PS)



### Abstract

- In this circle out of 1215.72 hectare 609.22 hectare of plantation comes under green zone, and 231 hectare of plantation scored more than 75.
- 512.5 hectare which is 42% of total plantation comes under yellow zone.
- 94 hectare which is 8% (approx.) of total plantation comes under red zone.

## Detail monitoring report of South East circle



Scheme- A3, Division- Burdwan, Range- Panagarh, Beat- Aduria, Location- Jalikandar, Area- 10 ha., Year- 2018

### Division

- Birbhum
- Burdwan
- Durgapur
- Nadia- Murshidabad

### Model

- A1
- A2
- A3
- A4 (2017-18)
- B1



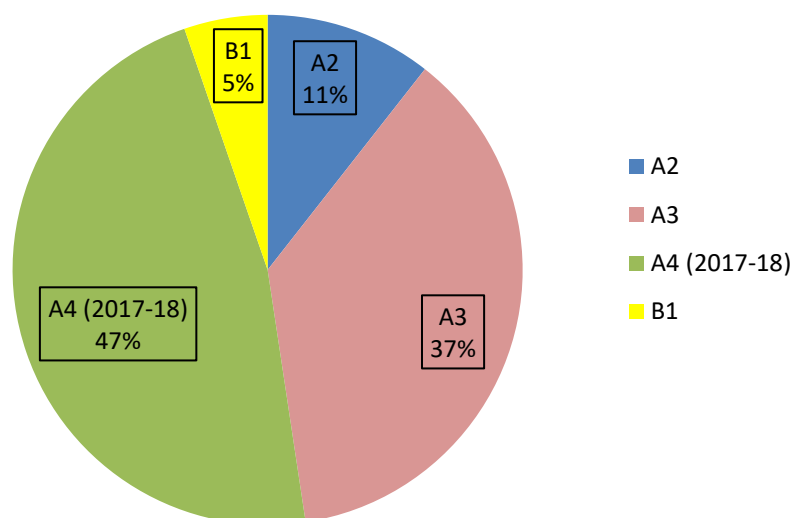
## 1<sup>st</sup> year (2018 Plantation)- DMU wise performance

Area in Ha.& height in cm.

DMU	A2				A3				B1				A4 (2017-18)			Total Area	DMU wise WSP Except A4	DMU wise Average WPS Except A4	DMU wise Average Height Except A4
	Area	WSP	WPS	Height	Area	WSP	WPS	Height	Area	WSP	WPS	Height	Area	WSP	Height				
Birbhum																0			
Burdwan	30	99	87	59	100	99	83	82					178	100	289	308	99	84	77
Durgapur	10	100	86	40	40	97	81	86								50	98	82	71
N & M									20	99	91	111				20	99	91	111
<b>Total</b>	<b>40</b>	<b>99</b>	<b>86</b>	<b>53</b>	<b>140</b>	<b>98</b>	<b>82</b>	<b>83</b>	<b>20</b>	<b>99</b>	<b>91</b>	<b>111</b>	<b>178</b>	<b>100</b>	<b>289</b>	<b>378</b>	<b>98</b>	<b>84</b>	<b>83</b>

Table -21

### Model wise area share



### Abstract

- Total area of the A2 model is 40 hectare. Burdwan and Durgapur DMU maintained WSP 99 and 100 respectively. Burdwan and Durgapur DMU maintained WPS 87 & 86 respectively and average height 53.
- The WSP& WPS of A3 model plantation are also very good, which are 98%& 82 respectively.
- Nadia-Murshidabad DMU raised 20 hectare plantation under B1 model and maintained WSP 99 %, WPS 91 and good average height 111 cm.
- Total area of the A4 (2017-18) model is 178 hectare. The average height of the plantation is 289 cm.

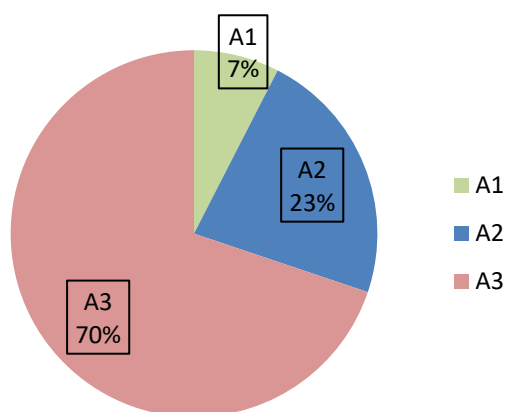
## 4<sup>th</sup> year (2015 Plantation)- DMU wise performance

Area in Ha.& height in cm.

DMU	A1				A2				A3				Total Area	DMU wise WSP	DMU wise WPS	DMU wise Average Height
	Area	WSP	WPS	Height	Area	WSP	WPS	Height	Area	WSP	WPS	Height				
Birbhum	5	95	83	421	20	74	56	81	70	85	61	237	95	83	61	241
Burdwan	15	96	97	426	30	92	93	183	141.5	89	72	316	186.5	90	77	293
Durgapur	5	98	100	500	25	92	93	139	20	87	77	271	50	91	87	303
<b>Total</b>	<b>25</b>	<b>96</b>	<b>95</b>	<b>449</b>	<b>75</b>	<b>87</b>	<b>83</b>	<b>154</b>	<b>231.5</b>	<b>88</b>	<b>69</b>	<b>287</b>	<b>331.5</b>	<b>88</b>	<b>74</b>	<b>279</b>

Table -22

### Model wise area share



### Abstract

- A1 model was taken up by all 3 DMUs over the area of 25 ha. and maintained overall WSP 96%, WPS 95 and average height 449 cm.
- A2 model was taken up by all 3 DMUs over the area of 75 ha. and maintained overall WSP 87%, WPS 83 and average height 154 cm.
- A3 model was taken up by all 3 DMUs over the area of 231.5 ha. and maintained overall WSP 88%, WPS 69 and average height 287 cm.

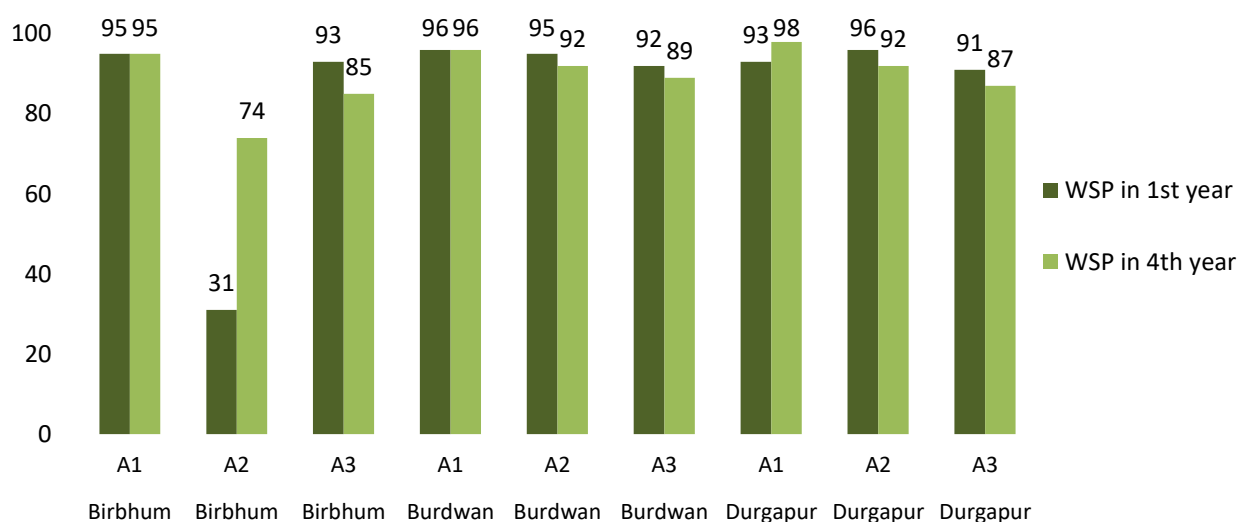
## WSP over the Years

### WSP in 1<sup>st</sup>&4<sup>th</sup> Year (2015 plantation over 4 years)

Area in Ha.& height in cm.

SL No.	DMU	Model	WSP in 1 <sup>st</sup> year monitoring (2015)	WSP in 4 <sup>th</sup> year monitoring (2018)	Change of WSP
1	Birbhum	A1	95	95	0
2	Birbhum	A2	31	74	43
3	Birbhum	A3	93	85	-8
4	Burdwan	A1	96	96	0
5	Burdwan	A2	95	92	-3
6	Burdwan	A3	92	89	-3
7	Durgapur	A1	93	98	5
8	Durgapur	A2	96	92	-4
9	Durgapur	A3	91	87	-4
<b>Total South-East Circle</b>			<b>94</b>	<b>91</b>	<b>-3</b>

Table -23



### Category wise weighted survival% (except A4)- 1<sup>st</sup> year (2018 Plantation)

Area in Ha.& height in cm.

DMU	Total area monitored	Category-A: SP-90% and above		Category-B: SP- 89% - 75%		Category-C: SP 74% - 50%		Category-D: SP < 50%	
		Area	% area	Area	% area	Area	% area	Area	% area
Birbhum	-	-	-	-	-	-	-	-	-
Burdwan	130	130	100	-	-	-	-	-	-
Durgapur	50	50	100	-	-	-	-	-	-
N & M	20	20	100	-	-	-	-	-	-
<b>South-East Circle</b>	<b>200</b>	<b>200</b>	<b>100</b>	-	-	-	-	-	-

Table- 24

### Category wise weighted survival%- 4<sup>th</sup> year (2015 Plantation)

Area in Ha.& height in cm.

DMU	Total area monitored	Category-A: SP- 75% and above		Category-B: SP-74% - 60%		Category-C: SP 59% - 40%		Category-D: SP < 40%	
		Area	% area	Area	% area	Area	% area	Area	% area
Birbhum	95	60	63	35	37	-	-	-	-
Burdwan	186.5	156.5	84	30	16	-	-	-	-
Durgapur	50	50	100	-	-	-	-	-	-
<b>South-East Circle</b>	<b>331.5</b>	<b>266.5</b>	<b>80</b>	<b>65</b>	<b>20</b>	-	-	-	-

Table- 25

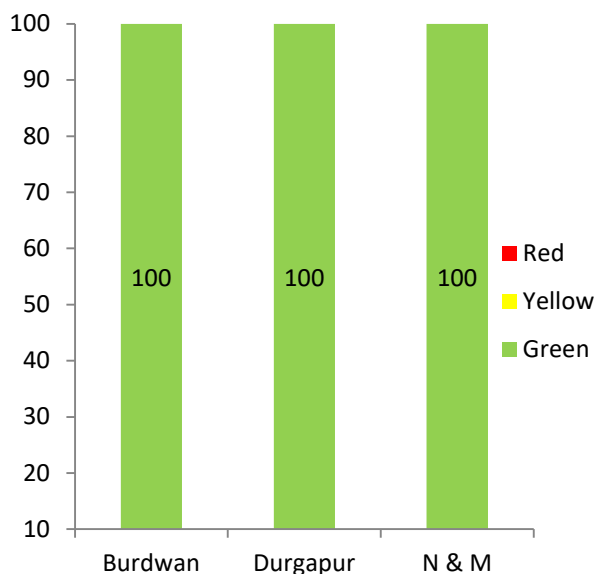
### Circle performance at a glance except A4 (Performance Score, for 1<sup>st</sup> year, 2018)

Area in Ha.& height in cm.

DMU	Total area monitored	Category-A: PS- > 85		Category-B: PS- 71-85		Category-C: PS-46-70		Category-D: PS-31-45		Category-E: PS- =<30	
		Area	% area	Area	% area	Area	% area	Area	% area	Area	% area
Burdwan	130	60	46	70	54	-	-	-	-	-	-
Durgapur	50	30	60	20	40	-	-	-	-	-	-
N & M	20	20	100	-	-	-	-	-	-	-	-
<b>South East Circle</b>	<b>200</b>	<b>110</b>	<b>55</b>	<b>90</b>	<b>45</b>	-	-	-	-	-	-

Table-26

### Circle Performance (PS)



### Abstract

- In this circle out of 200 hectare, 200 hectare of plantation comes under green zone, and 110 hectare of plantation scored more than 85.
- No plantation in this circle comes under yellow zone and red zone.
- 100% of plantation of Nadia & Murshidabad DMU scored more than 85.

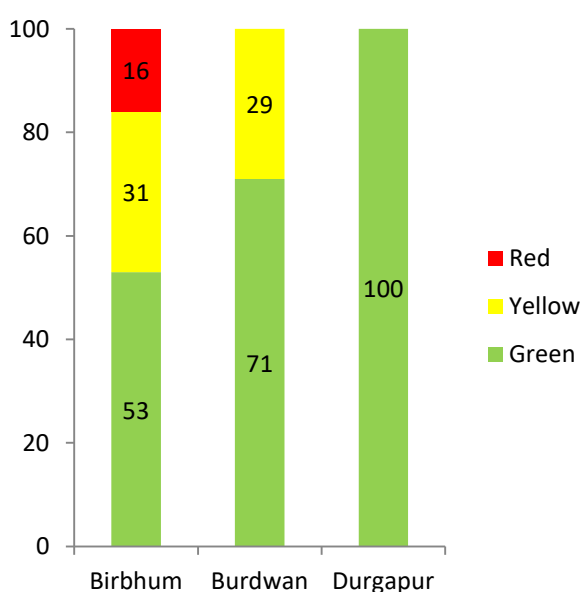
### Circle performance at a glance (Performance Score, for 4<sup>th</sup> year, 2015)

Area in Ha. & height in cm.

DMU	Total area monitored	Category-A: PS-> 75		Category-B: PS- 61-75		Category-C: PS- 46-60		Category-D: PS- 31-45		Category-E: PS- =<30	
		Area	% area	Area	% area	Area	% area	Area	% area	Area	% area
Birbhum	95	15	16	35	37	30	31	15	16	-	-
Burdwan	186.5	131.5	71	-	-	55	29	-	-	-	-
Durgapur	50	50	100	-	-	-	-	-	-	-	-
<b>South East Circle</b>	<b>331.5</b>	<b>196.5</b>	<b>59</b>	<b>35</b>	<b>11</b>	<b>85</b>	<b>26</b>	<b>15</b>	<b>4</b>	<b>-</b>	<b>-</b>

Table-27

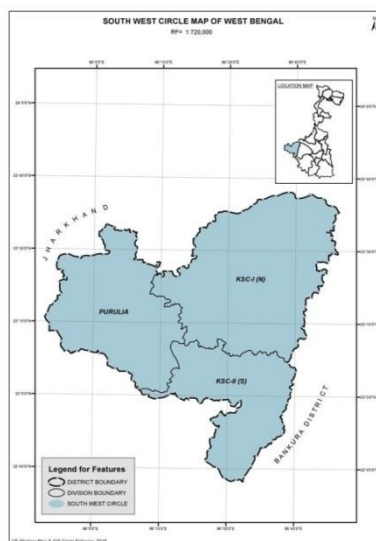
### Circle Performance (PS)



### Abstract

- In this circle out of 331.5 hectare 231.5 hectare of plantation comes under green zone, and 196.5 hectare of plantation scored more than 75.
- 85 hectare which is 26% of total plantation comes under yellow zone.
- 15 hectare which is 4% of total plantation comes under red zone.
- All plantation under Durgapur DMU is come under green zone and scored more than 75.

## Detail monitoring report of South West circle



Scheme- A3, Division- Kanagsabati(South), Range- Manbazar-1, Beat- Sindurpur, Location- Kunardih, Area- 20 ha., Year- 2014-15

### DMU

- Purulia
- Kangsabati (North)
- Kangsabati (South)
- Extension Forestry Division, Purulia

### Model

- A2
- A3
- A4 (2017-18)
- B1

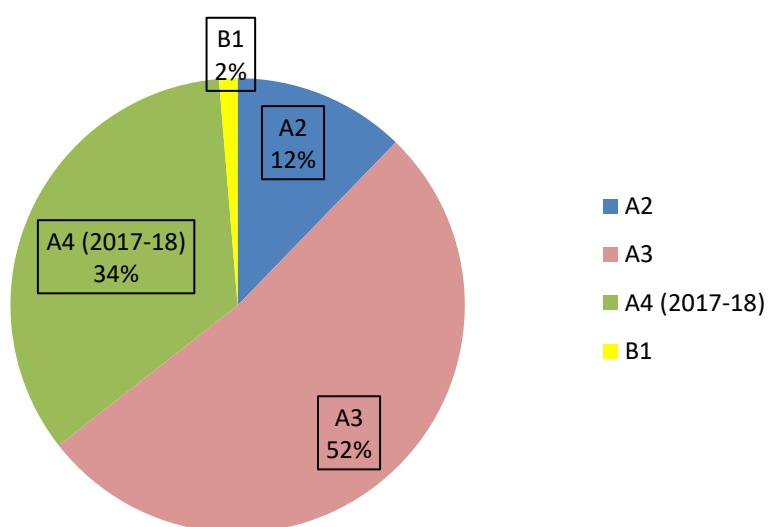
## 1<sup>st</sup> year (2018 Plantation) - DMU wise performance

Area in Ha.& height in cm.

DMU	A2				A3				B1				A4 (2017-18)			Total Area	DMU wise WSP Except A4	DMU wise Average WPS Except A4	DMU wise Average Height Except A4
	Area	WSP	WPS	Height	Area	WSP	WPS	Height	Area	WSP	WPS	Height	Area	WSP	Height				
EFD	-	-	-	-	-	-	-	-	10	100	92	95	-	-	-	10	100	92	95
KNG(N)	20	100	88	50	120	100	87	79	-	-	-	-	-	-	-	140	100	87	70
KNG(S)	25	100	90	54	100	100	90	95	-	-	-	-	-	-	-	125	100	90	88
Purulia	48	99	90	67	176	99	82	72	-	-	-	-	260	100	280	484	99	84	71
<b>Total</b>	<b>93</b>	<b>99</b>	<b>90</b>	<b>57</b>	<b>396</b>	<b>99</b>	<b>85</b>	<b>80</b>	<b>10</b>	<b>100</b>	<b>92</b>	<b>95</b>	<b>260</b>	<b>100</b>	<b>280</b>	<b>759</b>	<b>99</b>	<b>86</b>	<b>75</b>

Table -28

### Model wise area share



### Abstract

- Total area of the A2 model is 93 hectare. All DMUs except Purulia Extension Forestry maintained overall WSP 99%, WPS 90 and average height 57 cm.
- The WSP of A3 model plantation is also very good, which is 99%, WPS 85 and average height 80 cm.
- Purulia Extension Forestry DMU raised 10 hectare plantation under B1 model and maintained WSP 100%, WPS 92 and average height 95 cm.
- Total area of the A4 (2017-18) model is 260 hectare raised by Purulia DMU and the average height of the plantation is 280 cm.



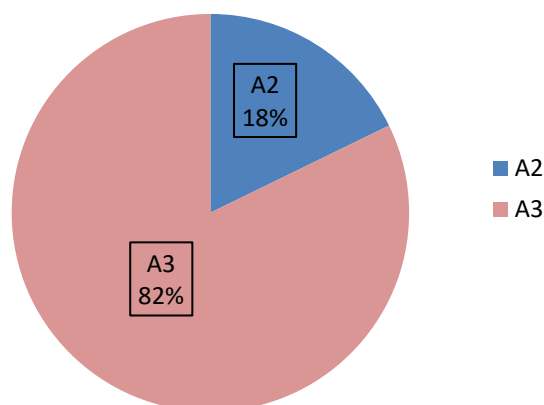
## 4<sup>th</sup> year (2015 Plantation) - DMU wise performance

Area in Ha.& height in cm.

DMU	A1				A2				A3				Total Area	DMU wise WSP	DMU wise WPS	DMU wise Average Height
	Area	WSP	WPS	Height	Area	WSP	WPS	Height	Area	WSP	WPS	Height				
EFD	-	-	-	-	-	-	-	-	-	-	-	-	-	-	-	-
KNG(N)	-	-	-	-	40	87	66	166	80	42	34	335	120	57	44	233
KNG(S)	-	-	-	-	-	-	-	-	105	90	81	395	105	90	81	395
Purulia	-	-	-	-	-	-	-	-	-	-	-	-	-	-	-	-
<b>Total</b>	-	-	-	-	<b>40</b>	<b>87</b>	<b>66</b>	<b>166</b>	<b>185</b>	<b>69</b>	<b>61</b>	<b>382</b>	<b>225</b>	<b>73</b>	<b>61</b>	<b>328</b>

Table -29

### Model wise area share



### Abstract

- A2 model was taken up by 2 DMUs over the area of 40 ha. and maintained overall WSP 87%, WPS 66 and average height 166 cm.
- 185 hectare of A3 plantation is raised by all 2 DMUs with over WSP 69%, WPS 61 and average height 382 cm.
- Total plantation area monitored in this circle was 225 ha. for the year 2014 and overall WSP 73%, WPS 61 and with a good average height of 328 cm.

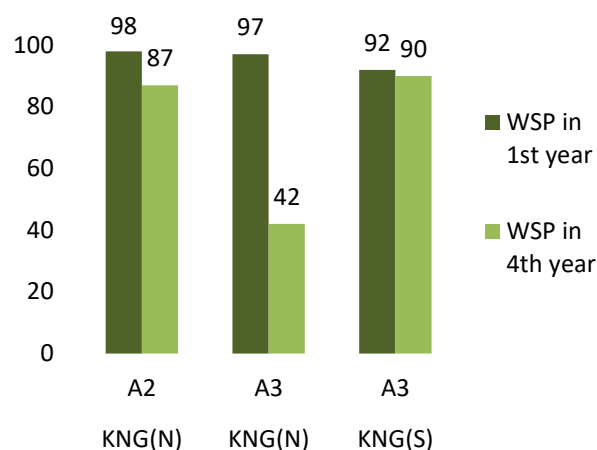
### WSP over the Years

#### WSP in 1<sup>st</sup>&4<sup>th</sup> Year (2015 plantation over 4 years)

Area in Ha.& height in cm.

SL No.	DMU	Model	WSP in 1 <sup>st</sup> year monitoring (2015)	WSP in 4 <sup>th</sup> year monitoring (2018)	Change of WSP
1	KNG(N)	A2	98	87	-11
2	KNG(N)	A3	97	42	-55
3	KNG(S)	A3	92	90	-2
<b>Total South-West Circle</b>			<b>95</b>	<b>73</b>	<b>-22</b>

Table- 30



### Category wise weighted survival% (except A4)- 1<sup>st</sup> year (2018 Plantation)

Area in Ha.& height in cm.

DMU	Total area monitored	Category-A: SP-90% and above		Category-B: SP- 89% - 75%		Category-C: SP 74% - 50%		Category-D: SP < 50%	
		Area	% area	Area	% area	Area	% area	Area	% area
EFD	10	10	100	-	-	-	-	-	-
KNG(N)	140	140	100	-	-	-	-	-	-
KNG(S)	125	125	100	-	-	-	-	-	-
Purulia	224	224	100	-	-	-	-	-	-
<b>South-West Circle</b>	<b>499</b>	<b>499</b>	<b>100</b>	<b>-</b>	<b>-</b>	<b>-</b>	<b>-</b>	<b>-</b>	<b>-</b>

Table- 31

### Category wise weighted survival%- 4<sup>th</sup> year (2015 Plantation)

Area in Ha.& height in cm.

DMU	Total area monitored	Category-A: SP-75% and above		Category-B: SP- 74% - 60%		Category-C: SP 59% - 40%		Category-D: SP < 40%	
		Area	% area	Area	% area	Area	% area	Area	% area
EFD	-	-	-	-	-	-	-	-	-
KNG(N)	120	75	63	-	-	-	-	45	37
KNG(S)	105	105	100	-	-	-	-	-	-
Purulia	-	-	-	-	-	-	-	-	-
<b>South-West Circle</b>	<b>225</b>	<b>180</b>	<b>80</b>	<b>-</b>	<b>-</b>	<b>-</b>	<b>-</b>	<b>45</b>	<b>20</b>

Table- 32

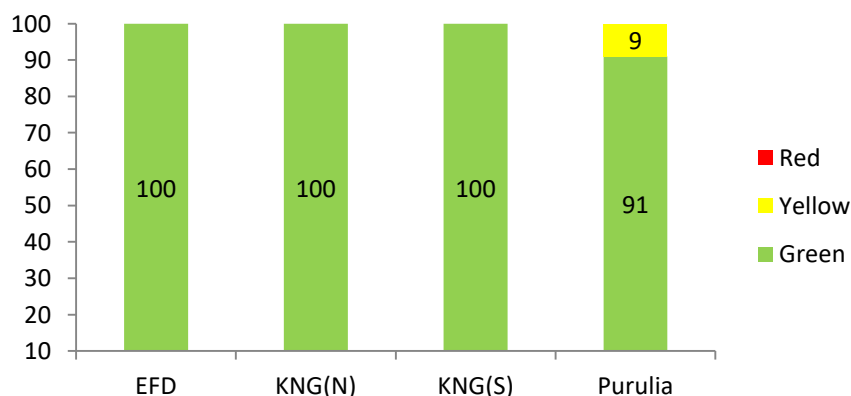
### Circle performance at a glance except A4 (Performance Score, for 1<sup>st</sup> year, 2018)

Area in Ha.& height in cm.

DMU	Total area monitored	Category-A: PS- > 85		Category-B: PS- 71-85		Category-C: PS-46-70		Category-D: PS-31-45		Category-E: PS- =<30	
		Area	% area	Area	% area	Area	% area	Area	% area	Area	% area
EFD	10	10	100	-	-	-	-	-	-	-	-
KNG(N)	140	120	86	20	14	-	-	-	-	-	-
KNG(S)	125	125	100	-	-	-	-	-	-	-	-
Purulia	224	139	62	65	29	20	9	-	-	-	-
<b>South West Circle</b>	<b>499</b>	<b>394</b>	<b>79</b>	<b>85</b>	<b>17</b>	<b>20</b>	<b>4</b>	<b>-</b>	<b>-</b>	<b>-</b>	<b>-</b>

Table-33

### Circle Performance (PS)



## Abstract

- In this circle out of 499 hectare 479 hectare of plantation comes under green zone, and 394 hectare of plantation scored more than 85.
- 20 hectare which is 9% of total plantation comes under yellow zone.
- No plantation in this circle comes under red zone.
- All plantations under KNG(S) DMU is scored more than 85.

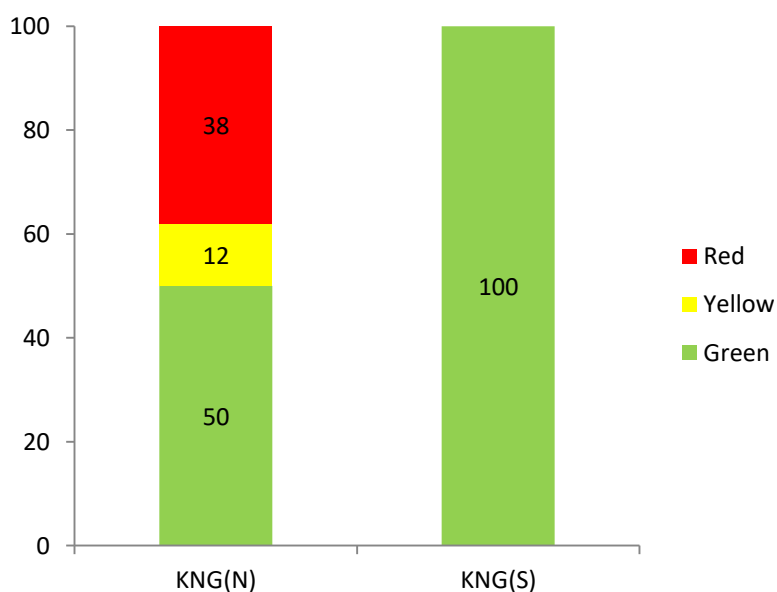
## Circle performance at a glance (Performance Score, for 4<sup>th</sup> year, 2015)

Area in Ha.& height in cm.

DMU	Total area monitored	Category-A: PS-> 75		Category-B: PS- 61-75		Category-C: PS- 46-60		Category-D: PS- 31-45		Category-E: PS- =<30	
		Area	% area	Area	% area	Area	% area	Area	% area	Area	% area
EFD	-	-	-	-	-	-	-	-	-	-	-
KNG(N)	120	10	8	50	42	15	12	-	-	45	38
KNG(S)	105	105	100	-	-	-	-	-	-	-	-
Purulia	-	-	-	-	-	-	-	-	-	-	-
<b>South West Circle</b>	<b>225</b>	<b>115</b>	<b>51</b>	<b>50</b>	<b>22</b>	<b>15</b>	<b>7</b>			<b>45</b>	<b>20</b>

Table-34

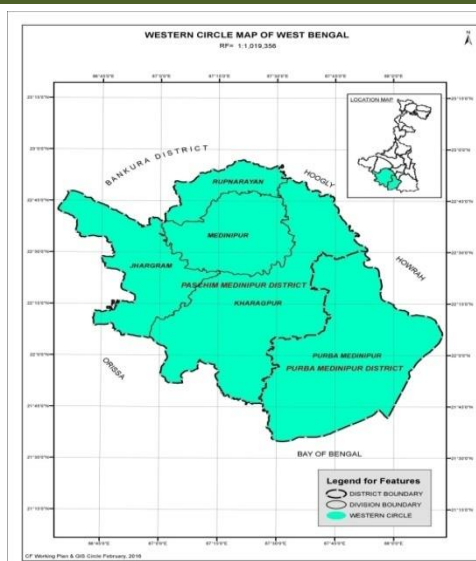
## Circle Performance (PS)



## Abstract

- In this circle out of 225 hectare 165 hectare of plantation comes under green zone, and 115 hectare of plantation scored more than 75.
- 15 hectare which is 7% of total plantation comes under yellow zone.
- All plantation under Kangsabati (South) DMU is come under green zone.
- 45 hectare which is 20% of total plantation comes under red zone.

## Detail monitoring report of Western circle



Scheme- A2, Division- Rupnarayan, Range- Amlagora, Beat- Raskundu, Location- Dhanghori-59, Year plantation- 2018, Area- 12 ha

### DMU

- Jhargram
- Khargapur
- Midnapore
- Rupnarayan

### Model

- A1
- A2
- A3
- A4 (2017-18)

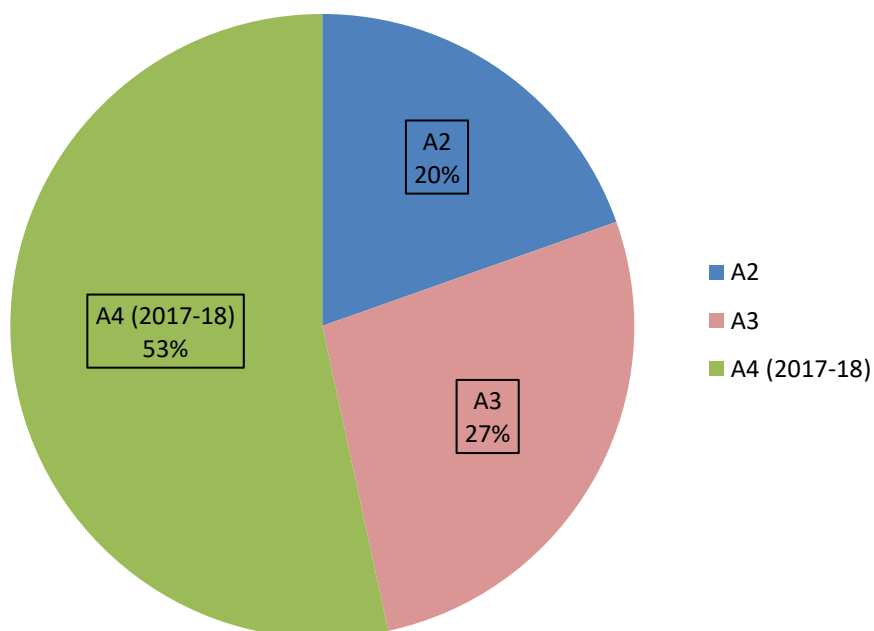
## 1<sup>st</sup> year (2018 Plantation)- DMU wise performance

Area in Ha.& height in cm.

DMU	A2				A3				A4 (2017-18)			Total Area	DMU wise WSP Except A4	DMU wise Average WPS Except A4	DMU wise Average Height Except A4
	Area	WSP	WPS	Height	Area	WSP	WPS	Height	Area	WSP	Height				
Jhargram	20	98	89	72	46	96	76	90	270	100	284	336	97	80	85
Khargapur	20.5	100	92	77	83	99	84	91	210	100	313	314	99	85	87
Midnapore	160	100	84	58	232	98	79	71	350	100	302	742	99	81	67
Rupnarayan	159	98	80	56	135	99	88	109	150	100	297	444	99	83	83
<b>Total</b>	<b>359.5</b>	<b>99</b>	<b>83</b>	<b>60</b>	<b>496</b>	<b>98</b>	<b>82</b>	<b>88</b>	<b>980</b>	<b>100</b>	<b>299</b>	<b>1836</b>	<b>99</b>	<b>82</b>	<b>77</b>

Table -35

### Model wise area share



### Abstract

- Total area of the A2 model is 359.5 hectare. All the 4 DMUs have maintained overall WSP 99%, overall WPS 83. The overall average height is 60 cm.
- The overall WSP of A3 model plantation is also very good, which is 98%, WPS 82 and average height 88 cm.
- Total area of the A4 (2017-18) model is 980 hectare raised by all the 4 DMUs and the average height of the plantation is 299 cm.

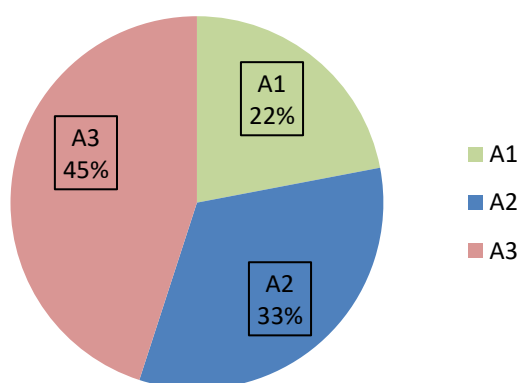
## 4<sup>th</sup> year (2015 Plantation)- DMU wise performance

Area in Ha.& height in cm.

DMU	A1				A2				A3				Total Area	DMU wise WSP	DMU wise WPS	DMU wise Average Height
	Area	WSP	WPS	Height	Area	WSP	WPS	Height	Area	WSP	WPS	Height				
Jhargram	-	-	-	-	-	-	-	-	-	-	-	-	-	-	-	-
Khargapur	31	85	54	285	31	86	74	209	50	91	67	313	112	88	66	273
Midnapore	15	97	76	255	100	54	28	80	80	79	48	284	195	68	40	172
Rupnarayan	50	93	67	259	15	79	60	161	70	86	57	348	135	88	61	273
<b>Total</b>	<b>96</b>	<b>91</b>	<b>64</b>	<b>271</b>	<b>146</b>	<b>63</b>	<b>41</b>	<b>122</b>	<b>200</b>	<b>85</b>	<b>56</b>	<b>316</b>	<b>442</b>	<b>79</b>	<b>53</b>	<b>232</b>

Table -36

### Model wise area share



### Abstract

- A1 model was taken up by 3 DMUs over the area of 96 hectare and maintained excellent performance with WSP 91%, WPS 64 and average height 271.
- Total area of the A2 model is 146 hectare. All the 3 DMUs have maintained overall WSP 63%, WPS 41. The average height of the plantation is 122 cm.
- 200 hectare plantation raised in A3 model with overall WSP 85%, WPS 56 and average height 316 cm.

## WSP over the Years

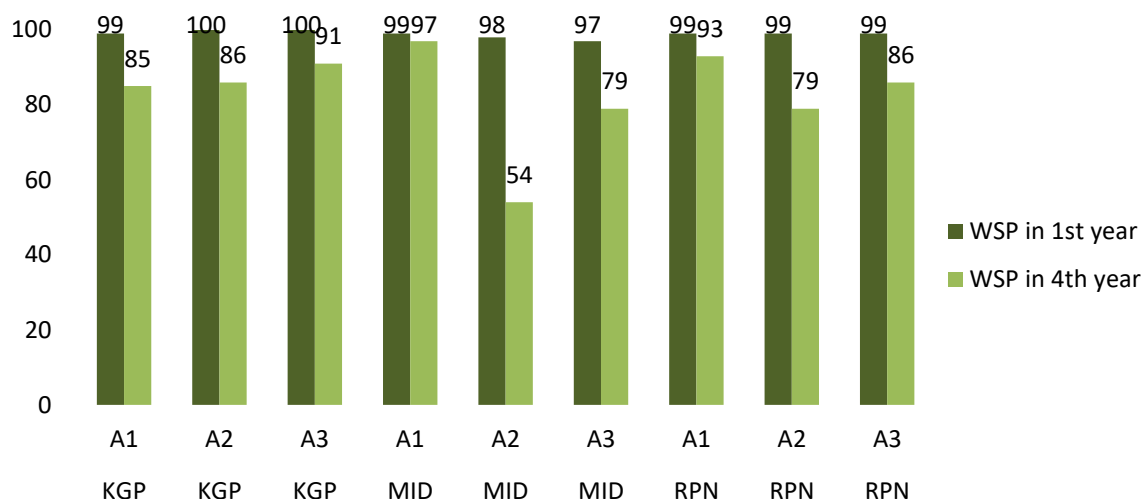
### WSP in 1<sup>st</sup>&4<sup>th</sup> Year (2015 plantation over 4 years)

Area in Ha.& height in cm.

SL No.	DMU	Model	WSP in 1 <sup>st</sup> year monitoring (2015)	WSP in 4 <sup>th</sup> year monitoring (2018)	Change of WSP
1	Kharagpur	A1	99	85	-14
2	Kharagpur	A2	100	86	-14
3	Kharagpur	A3	100	91	-9
4	Midinipur	A1	99	97	-2
5	Midinipur	A2	98	54	-44
6	Midinipur	A3	97	79	-18
7	Rupnarayan	A1	99	93	-6
8	Rupnarayan	A2	99	79	-20
9	Rupnarayan	A3	99	86	-13
<b>Total Western Circle</b>			<b>98</b>	<b>79</b>	<b>-19</b>

Table- 37





### Category wise weighted survival% (except A4)- 1<sup>st</sup> year (2018 Plantation)

Area in Ha.& height in cm.

DMU	Total area monitored	Category-A: SP-90% and above		Category-B: SP-89% - 75%		Category-C: SP 74% - 50%		Category-D: SP < 50%	
		Area	% area	Area	% area	Area	% area	Area	% area
Jhargram	66	66	100	-	-	-	-	-	-
Khargapur	103.5	103.5	100	-	-	-	-	-	-
Midnapore	392	392	100	-	-	-	-	-	-
Rupnarayan	294	294	100	-	-	-	-	-	-
<b>Western Circle</b>	<b>855.5</b>	<b>855.5</b>	<b>100</b>	-	-	-	-	-	-

Table- 38

### Category wise weighted survival%- 4<sup>th</sup> year (2015 Plantation)

Area in Ha.& height in cm.

DMU	Total area monitored	Category-A: SP-75% and above		Category-B: SP-74% - 60%		Category-C: SP 59% - 40%		Category-D: SP < 40%	
		Area	% area	Area	% area	Area	% area	Area	% area
Jhargram	-	-	-	-	-	-	-	-	-
Khargapur	112	102	91	10	9	-	-	-	-
Midnapore	195	80	41	45	23	50	26	20	10
Rupnarayan	135	125	93	10	7	-	-	-	-
<b>Western Circle</b>	<b>442</b>	<b>307</b>	<b>69</b>	<b>65</b>	<b>15</b>	<b>50</b>	<b>11</b>	<b>20</b>	<b>5</b>

Table- 39

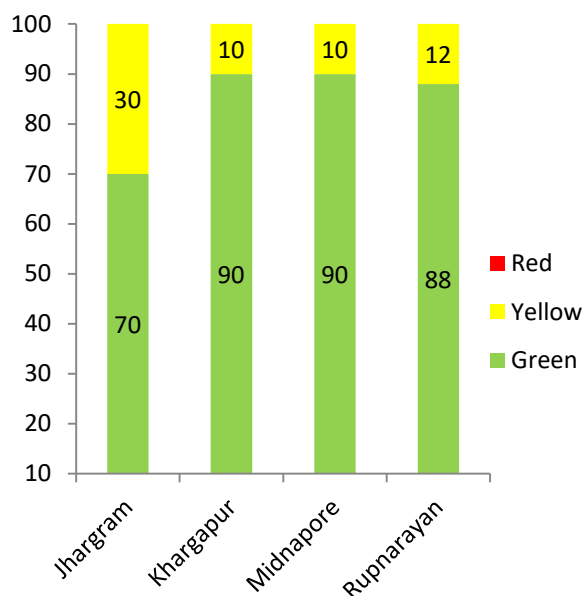
### Circle performance at a glance except A4 (Performance Score, for 1<sup>st</sup> year, 2018)

Area in Ha.& height in cm.

DMU	Total area monitored	Category-A: PS-> 85		Category-B: PS-71-85		Category-C: PS-46-70		Category-D: PS-31-45		Category-E: PS- =<30	
		Area	% area	Area	% area	Area	% area	Area	% area	Area	% area
Jhargram	66	46	70	-	-	20	30	-	-	-	-
Khargapur	103.5	35.5	34	58	56	10	10	-	-	-	-
Midnapore	392	116	30	233.5	60	42.5	10	-	-	-	-
Rupnarayan	294	149.5	51	109.5	37	35	12	-	-	-	-
<b>Western Circle</b>	<b>855.5</b>	<b>347</b>	<b>41</b>	<b>401</b>	<b>47</b>	<b>107.5</b>	<b>12</b>	-	-	-	-

Table-40

### Circle Performance (PS)



### Abstract

- In this circle out of 855.5 hectare 748 hectare of plantation comes under green zone, and 347 hectare of plantation scored more than 85.
- In this circle out of 108 hectare of plantation comes under yellow zone.
- No. plantation in this circle comes under red zone.

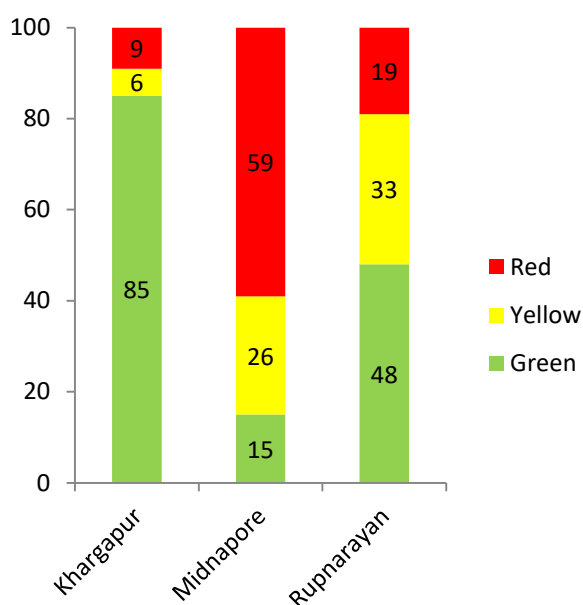
### Circle performance at a glance (Performance Score, for 4<sup>th</sup> year, 2015)

Area in Ha. & height in cm.

DMU	Total area monitored	Category-A: PS-> 75		Category-B: PS- 61-75		Category-C: PS- 46-60		Category-D: PS- 31-45		Category-E: PS- =<30	
		Area	% area	Area	% area	Area	% area	Area	% area	Area	% area
Jhargram	-	-	-	-	-	-	-	-	-	-	-
Khargapur	112	31	28	64	57	7	6	10	9	-	-
Midnapore	195	30	15	-	-	50	26	30	15	85	44
Rupnarayan	135	10	7	55	41	45	33	25	19	-	-
<b>Western Circle</b>	<b>442</b>	<b>71</b>	<b>16</b>	<b>119</b>	<b>27</b>	<b>102</b>	<b>23</b>	<b>65</b>	<b>15</b>	<b>85</b>	<b>19</b>

Table-41

### Circle Performance (PS)



### Abstract

- In this circle out of 442 hectare 190 hectare of plantation comes under green zone, and 71 hectare of plantation scored more than 75.
- 102 hectare which is 23% of total plantation comes under yellow zone.
- 150 hectare which is 34% of total plantation comes under redzone.

## Inter Circle Performance at a glance except A4 (2018-19) (PS)

**(For 1<sup>st</sup> year, 2018)**

Area in Ha.

Circle	Total area monitored	Category-A: PS-> 85		Category-B: PS- 71-85		Category-C: PS- 46-70		Category-D: PS- 31-45		Category-E: PS- =<30	
		Area	% area	Area	% area	Area	% area	Area	% area	Area	% area
Central	905	863	95	27	3	15	2	-	-	-	-
South East	200	110	55	90	45	-	-	-	-	-	-
South West	499	394	79	85	17	20	4	-	-	-	-
Western	855.5	347	41	401	47	107.5	12	-	-	-	-
<b>All Circle</b>	<b>2459.5</b>	<b>1714</b>	<b>70</b>	<b>603</b>	<b>25</b>	<b>142.5</b>	<b>5</b>	-	-	-	-

Table-42

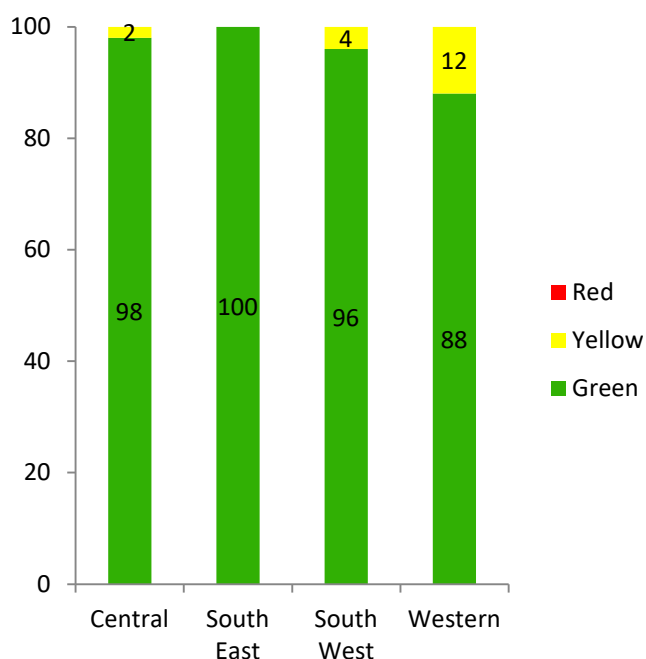
**(For 4<sup>th</sup> year, 2015)**

Area in Ha.

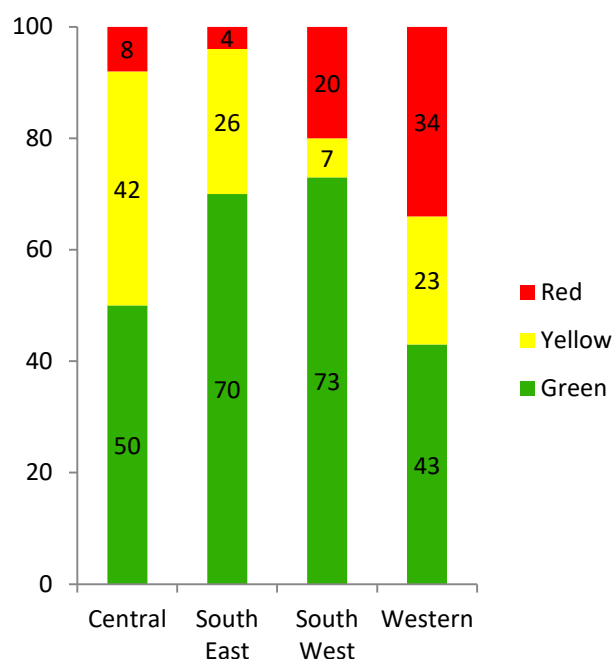
Circle	Total area monitored	Category-A: PS- > 75		Category-B: PS- 61-75		Category-C: PS- 46-60		Category-D: PS- 31-45		Category-E: PS- =<30	
		Area	% area	Area	% area	Area	% area	Area	% area	Area	% area
Central	1215.72	231	19	378.22	31	512.5	42	80	7	14	1
South East	331.5	196.5	59	35	11	85	26	15	4	-	-
South West	225	115	51	50	22	15	7	-	-	45	20
Western	442	71	16	119	27	102	23	65	15	85	19
<b>All Circle</b>	<b>2214.22</b>	<b>613.5</b>	<b>28</b>	<b>582.22</b>	<b>26</b>	<b>714.5</b>	<b>32</b>	<b>160</b>	<b>8</b>	<b>144</b>	<b>6</b>

Table-43

**Circle Performance for 1<sup>st</sup> year, 2018**



**Circle Performance for 4<sup>th</sup> year, 2015**

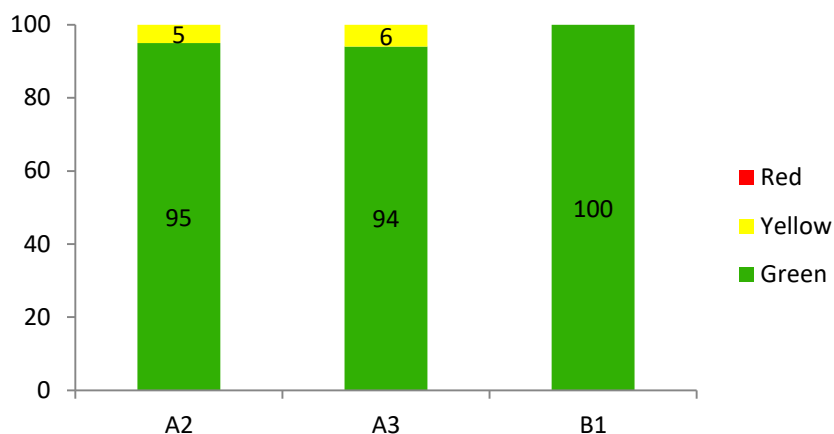


### Model wise category of plantation 1<sup>st</sup> year, 2018

Area in Ha.& height in cm.

Circle	Total area monitored	Category-A: PS- > 85		Category-B: PS- 71-85		Category-C: PS- 46-70		Category-D: PS-31-45		Category-E: PS- =<30	
		Area	% area	Area	% area	Area	% area	Area	% area	Area	% area
A2	720.5	509	71	176.5	24	35	5	-	-	-	-
A3	1709	1175	69	426.5	25	107.5	6	-	-	-	-
B1	30	30	100	-	-	-	-	-	-	-	-
<b>Total</b>	<b>2459.5</b>	<b>1714</b>	<b>70</b>	<b>603</b>	<b>25</b>	<b>142.5</b>	<b>5</b>	<b>-</b>	<b>-</b>	<b>-</b>	<b>-</b>

Table- 44

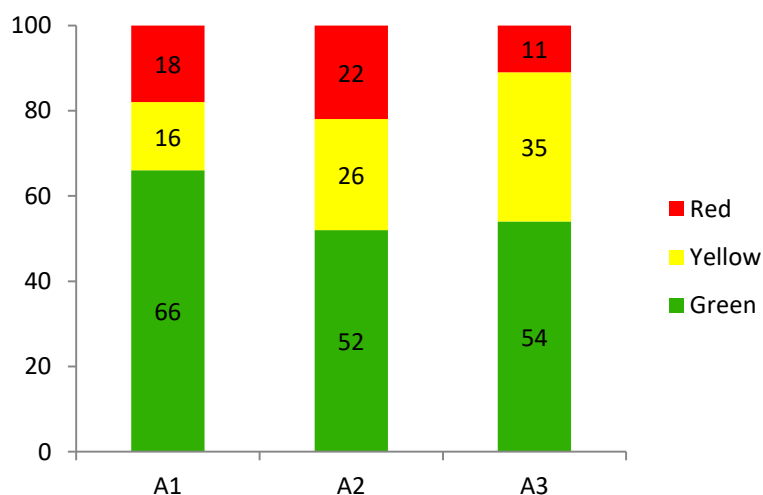


### Model wise category of plantation 4<sup>th</sup> year, 2015

Area in Ha.& height in cm.

Model	Total area monitored	Category-A: PS-> 75		Category-B: PS- 61-75		Category-C: PS- 46-60		Category-D: PS- 31-45		Category-E: PS- =<30	
		Area	% area	Area	% area	Area	% area	Area	% area	Area	% area
A1	166	40	24	69	42	27	16	30	18	-	-
A2	406	121	30	90	22	105	26	20	5	70	17
A3	1642.22	452.5	28	423.22	26	582.5	35	110	7	74	4
<b>Total</b>	<b>2214.22</b>	<b>613.5</b>	<b>28</b>	<b>582.22</b>	<b>26</b>	<b>714.5</b>	<b>32</b>	<b>160</b>	<b>8</b>	<b>144</b>	<b>6</b>

Table- 45



## Detail monitoring data, 1<sup>st</sup> year, 2018-19 plantation

Area in Ha.& height in cm

Model	Circle	DMU	FMU	Beat	Location	Area	SP	Lat. (N)	Long. (E)	Height	Date of Survey	PS	Cat.	Grade	Length of SMC works in RMT/hec.	Working Circle	Remarks
A2	Central	Bankura (North)	Radhanagar	Radhanagar	Bankati-45	5	100	23°10'15.5"	87°18'49.0"	80	09.11.18	97	A	Excellent	570	Sal	
A2	Central	Bankura (North)	Beliatiore	Kundulia	Bhalukkuliya-201	29	100	23°11'07.2"	87°15'16.1"	80	12.10.18	95	A	Excellent	498	Dev.	
A2	Central	Bankura (North)	Beliatiore	Kundulia	Siarah-204	16	100	23°12'47.3"	87°14'15.3"	84	13.10.18	95	A	Excellent	516	Dev.	
A3	Central	Bankura (North)	Radhanagar	Radhanagar	Bankati-45	5	100	23°10'16.0"	87°18'36.1"	136	09.11.18	99	A	Excellent	550	Dev.	
A3	Central	Bankura (North)	Patarasayer	Kushadwip	Satgachhe-135	15	99	23°10'18.2"	87°26'38.6"	119	15.11.18	96	A	Excellent	508	Dev.	
A3	Central	Bankura (North)	Radhanagar	Bhora	Chek-chuamosina-19, Bendara-38, Ramsundarpur-39	30	100	23°09'50.64"	87°21'34.62"	117	15.11.18	96	A	Excellent	876	Dev.	
A3	Central	Bankura (North)	G.Ghati	Ukhradihi	Rajamela-64	5	99	23°25'58.87"	87°04'19.57"	110	25.10.18	93	A	Excellent	520	Dev.	
A3	Central	Bankura (North)	Saltora	Saltora	Kharbona-99	10	99	23°32'28.27"	86°56'39.45"	114	12.11.18	93	A	Excellent	487	Dev.	
A3	Central	Bankura (North)	Patarasayer	Birsingha	Binodnagar-106	10	99	23°12'14.2"	87°27'52.1"	111	15.11.18	92	A	Excellent	533	Dev.	

Model	Circle	DMU	FMU	Beat	Location	Area	SP	Lat. (N)	Long. (E)	Height	Date of Survey	PS	Cat.	Grade	Length of SMC works in RMT/hec.	Working Circle	Remarks
A3	Central	Bankura (North)	Radhanagar	Balarampur	Chek-chuamosina-19	5	100	23°11'06.02"	87°21'03.20"	104	09.11.18	92	A	Excellent	570	Dev.	
A3	Central	Bankura (North)	Radhanagar	Panchal	Bhangabandh-1	10	100	23°12'41.5"	87°16'35.09"	104	10.11.18	92	A	Excellent	593	Dev.	
A3	Central	Bankura (North)	Barjora	Barjora	Saharjora-26	5	98	23°24'31.4"	87°14'40.2"	108	11.10.18	90	A	Excellent	500	Dev.	
A3	Central	Bankura (North)	Beliatiore	Kundulia	Amlatore-196	15	100	23°12'35.2"	87°14'00.9"	113	14.10.18	90	A	Excellent	500	Dev.	
A3	Central	Bankura (North)	Saltora	Murlu	Murlu-105	15	99	23°31'44.2"	86°54'46.9"	95	12.11.18	90	A	Excellent	604	Dev.	
A3	Central	Bankura (North)	Radhanagar	Bhora	Chek-chuamosina-19	15	100	23°10'52.85"	87°21'50.84"	97	10.11.18	89	A	Excellent	672	Dev.	
A3	Central	Bankura (North)	Sonamukhi	Sonamukhi	Sonamukhi-85	20	99	23°17'20.3"	87°25'30.5"	96	13.11.18	89	A	Excellent	517	Dev.	
A3	Central	Bankura (North)	Beliatiore	Kundulia	Bhalukkuliya-201	10	99	23°11'03.3"	87°15'16.1"	100	07.11.18	87	A	Excellent	500	Dev.	
A3	Central	Bankura (North)	Barjora	Barjora	Saharjora-26	15	99	23°24'53.9"	87°14'14.7"	78	11.10.18	83	A	Very Good	504	Dev.	
A3	Central	Bankura (North)	Bankura (N)	Belboni	Brindabanpur-146	10	95	23°18'41.7"	87°07'47.0"	103	08.11.18	68	A	Good	493	Dev.	
A3	Central	Bankura (North)	G.Ghati	Ramharipur	Kenduabari-140, Arjunpur-143	5	94	23°14'33.03"	87°08'22.39"	88	25.10.18	65	A	Good	530	Dev.	
A2	Central	Bankura (South)	Simlapal	Simlapal	Karakanali-142	15	99	22°59'04.1"	86°05'53.3"	89	14.11.18	100	A	Excellent	505	Sal	
A2	Central	Bankura (South)	Fulkushma	Fulkushma	Raspal-249	7	100	22°43'45.8"	86°49'26.5"	86	14.11.19	100	A	Excellent	510	Dev.	

Model	Circle	DMU	FMU	Beat	Location	Area	SP	Lat. (N)	Long. (E)	Height	Date of Survey	PS	Cat.	Grade	Length of SMC works in RMT/hec.	Working Circle	Remarks
A2	Central	Bankura (South)	Indpur	Hatagram	Purulia-32	23	100	23°11'43.0"	86°48'42.9"	78	03.10.18	96	A	Excellent	509	Dev.	
A2	Central	Bankura (South)	Motgoda	Pirrah	Bhalukadungri-103	8	98	22°52'10.5"	86°52'10.7"	63	08.11.18	89	A	Excellent	506	Dev.	
A3	Central	Bankura (South)	Fulkushma	Susunia	Birbandh-183	10	99	22°43'22.7"	86°47'27.5"	126	16.11.18	97	A	Excellent	513	Dev.	
A3	Central	Bankura (South)	Indpur	Indpur	Jiorda-105	14	100	23°05'03.2"	86°52'58.6"	115	05.10.18	92	A	Excellent	492	Dev.	
A3	Central	Bankura (South)	Bankura	Bankura	Chokjagadalla-195, Dadhimukha-189	40	100	23°10'51.0"	87°02'45.0"	101	07.10.18	92	A	Excellent	503	Dev.	
A3	Central	Bankura (South)	Bankura	Ratanpur	Ramkrishnapur-21, Chak Gopalpur-16	48	100	23°06'45.2"	87°01'05.7"	110	10.10.18	92	A	Excellent	507	Dev.	
A3	Central	Bankura (South)	Simlapal	Simlapal	Krishnapur-137	30	99	22°54'51.0"	86°04'12.7"	106	17.11.18	92	A	Excellent	504	Dev.	
A3	Central	Bankura (South)	Fulkushma	Susunia	Kharujhore-172	10	99	22°42'57.8"	86°47'54.3"	98	16.11.18	90	A	Excellent	500	Dev.	
A3	Central	Bankura (South)	Indpur	Hatagram	Purulia-32, Madhabour-27	26	99	23°11'43.0"	86°48'42.9"	86	04.10.18	89	A	Excellent	503	Dev.	
A3	Central	Bankura (South)	Bankura	Ratanpur	Chakuparsole-32	12	99	23°06'45.2"	87°03'18.0"	74	10.10.18	85	A	Very Good	507	Dev.	
A2	Central	Panchet	Bankadaha	Peardoba	Chandabila-123	10	100	22°59'49.78"	87°16'28.22"	104	13.02.19	100	A	Excellent	587	Dev.	
A2	Central	Panchet	Bankadaha	Uporsole	Chak-Uporsole-160	13	99	22°57'11.37"	87°23'20.8"	87	13.02.20	100	A	Excellent	505	Dev.	



Model	Circle	DMU	FMU	Beat	Location	Area	SP	Lat. (N)	Long. (E)	Height	Date of Survey	PS	Cat.	Grade	Length of SMC works in RMT/hec.	Working Circle	Remarks
A2	Central	Panchet	Joypur	Adhkta	Adhkata-64	10	99	22°58'18.1"	87°27'19.6"	88	14.02.19	100	A	Excellent	507	Dev.	
A2	Central	Panchet	Joypur	Adhkta	Adhkata-64	20	99	22°57'35.2"	87°27'51.4"	95	15.02.19	100	A	Excellent	551	Dev.	
A2	Central	Panchet	Bankadaha	Amdangra	Chakmajuris, Prasadpur-116	12	100	22°58'08.69"	87°14'11.78"	76	14.02.19	97	A	Excellent	530	Sal	
A2	Central	Panchet	Taldangra	Taldangra	Belasuli, Shyamsundarpur-13	10	100	23°04'35.6"	87°03'11.2"	72	12.02.19	93	A	Excellent	520	Sal	
A2	Central	Panchet	Taldangra	Asna	Shyampur-93	10	100	23°01'6.55"	87°08'52.3"	73	12.02.19	93	A	Excellent	507	Sal	
A2	Central	Panchet	Joypur	Adhkta	Jadavnagar-130	20	99	22°56'33.5"	87°28'45.5"	74	16.02.19	93	A	Excellent	597	Dev.	
A2	Central	Panchet	Bishnupur	Bishnupur-II	Mohisdoba-289, Jamdahara-233	10	99	23°02'48.0"	87°28'45.5"	75	17.02.19	93	A	Excellent	521	Dev.	
A2	Central	Panchet	Bishnupur	Bishnupur-II	Jhatibani-270	10	100	23°02'49.3"	87°14'25.3"	75	17.02.19	93	A	Excellent	513	Dev.	
A3	Central	Panchet	Bankadaha	Uporsol	Chakuporsol-160	5	100	22°57'30.73"	87°24'50.64"	131	20.02.19	100	A	Excellent	540	Dev.	
A3	Central	Panchet	Bishnupur	Bishnupur-I	Dhengasole-128, Lohari-129	10	99	23°00'19.0"	87°17'38.0"	103	22.02.19	100	A	Excellent	506	Dev.	
A3	Central	Panchet	Onda	Chingani	Chawlabad Chak-168, Krishnasinghpur-167	10	100	23°03'05.49"	87°09'30.93"	146	01.03.19	98	A	Excellent	533	Dev.	

Model	Circle	DMU	FMU	Beat	Location	Area	SP	Lat. (N)	Long. (E)	Height	Date of Survey	PS	Cat.	Grade	Length of SMC works in RMT/hec.	Working Circle	Remarks
A3	Central	Panchet	Bankadaha	Bankadaha	Dundur-62(116)	30	100	23°00'46.49"	87°21'00.07"	126	20.02.20	97	A	Excellent	569	Dev.	
A3	Central	Panchet	Bishnupur	Bishnupur-II	Mohisdoba-288, Jamdahara-289	15	99	23°02'48.0"	87°14'2.0"	126	26.02.19	97	A	Excellent	512	Dev.	
A3	Central	Panchet	Bishnupur	Bishnupur-II	Jhatibani-270	15	99	23°02'49.3"	87°14'25.3"	123	28.02.19	97	A	Excellent	526	Dev.	
A3	Central	Panchet	Onda	Chingani	Chawlabad Chak-168, Krishnasinghpur-167	26	100	23°03'23.54"	87°10'12.0"	130	27.02.19	94	A	Excellent	585	Dev.	
A3	Central	Panchet	Taldangra	Taldangra	Chak-Shyampur-89	18	100	22°59'51.40"	87°08'11.54"	104	18.02.19	93	A	Excellent	493	Dev.	
A3	Central	Panchet	Bankadaha	Peardoba	Majuria, Prasadpur-121	10	100	23°00'29.05"	87°16'28.22"	109	21.02.19	93	A	Excellent	507	Dev.	
A3	Central	Panchet	Bankadaha	Amdahara	Amdahara-159	10	100	22°58'40.19"	87°22'35.19"	110	21.02.19	93	A	Excellent	740	Dev.	
A3	Central	Panchet	Bankadaha	Amdahara	Murakati-134	10	100	22°55'57.83"	87°13'37.65"	109	22.02.19	93	A	Excellent	540	Dev.	
A3	Central	Panchet	Joypur	Adhkata	Hatbari-137, Harinasuli-132	25	99	22°55'34.4"	87°28'41.6"	107	23.02.19	93	A	Excellent	508	Dev.	
A3	Central	Panchet	Joypur	Adhkata	Rangamati-74	15	99	22°54'55.7"	87°27'26.6"	205	25.02.19	93	A	Excellent	509	Dev.	
A3	Central	Panchet	Onda	Chingani	Dhaboni-50	36	100	23°04'38.7"	87°07'42.36"	111	03.02.19	91	A	Excellent	575	Dev.	
A3	Central	Panchet	Onda	Chingani	Dhaboni-50, Metalya-51	42	100	23°05'36.37"	87°08'14.46"	105	05.02.19	91	A	Excellent	518	Dev.	

Model	Circle	DMU	FMU	Beat	Location	Area	SP	Lat. (N)	Long. (E)	Height	Date of Survey	PS	Cat.	Grade	Length of SMC works in RMT/hec.	Working Circle	Remarks
A3	Central	Panchet	Onda	Chingani	Dhaboni-50	10	100	23°04'40.78"	87°08'49.41"	109	01.03.19	91	A	Excellent	553	Dev.	
A2	South East	Burdwan	Panagarh	Khandari	Khandari-84	15	99	23°27'05.8"	87°32'23.2"	57	26.12.18	87	A	Excellent	460	Sal	
A2	South East	Burdwan	Durgapur	Molandighi	Bistupur-44	15	99	23°33'48.75"	87°25'40.7"	60	22.09.18	86	A	Excellent	450	Sal	
A3	South East	Burdwan	Panagarh	Aduria	Jalikandar-11	10	98	23°32'18.8"	87°33'51.6"	106	26.12.18	90	A	Excellent	460	Dev.	
A3	South East	Burdwan	Durgapur	Shibpur	Chuamudafa-46	10	99	23°36'26.8"	87°22'35.4"	95	22.09.18	86	A	Excellent	428	Dev.	
A3	South East	Burdwan	Guskara	Bhalki	Dombandhi-58	10	99	23°26'53.4"	87°36'04.5"	92	26.12.19	86	A	Excellent	450	Dev.	
A3	South East	Burdwan	Panagarh	Aduria	Bhuera-7	30	99	23°33'37.1"	87°34'55.0"	82	27.12.18	83	A	Very Good	470	Dev.	
A3	South East	Burdwan	Durgapur	Shibpur	Chuamudafa-46	20	99	23°36'17.0"	87°22'49.3"	61	26.09.18	82	A	Very Good	434	Dev.	
A3	South East	Burdwan	Durgapur	Molandighi	Bistupur-44	10	98	23°33'53.0"	87°25'46.4"	64	22.09.19	82	A	Very Good	423	Dev.	
A3	South East	Burdwan	Durgapur	Basudha	Bistupur-44	10	96	23°35'01.9"	87°28'35.9"	73	27.09.18	71	A	Very Good	285	Dev.	
A2	South East	Durgapur	Ukhra	Khantaberia	Madhiganj-24	10	100	23°39'28.3"	87°20'11.2"	40	28.12.18	86	A	Excellent	460	Dev.	
A3	South East	Durgapur	Ukhra	Fuljhore	Jemua-80	20	99	23°33'31.6"	87°21'38.2"	99	28.12.19	90	A	Excellent	450	Dev.	
A3	South East	Durgapur	Asansol	Hadla	Bathanbari-4	20	95	23°48'12.6"	86°50'11.2"	73	29.12.20	71	A	Very Good	450	Dev.	

Model	Circle	DMU	FMU	Beat	Location	Area	SP	Lat. (N)	Long. (E)	Height	Date of Survey	PS	Cat.	Grade	Length of SMC works in RMT/hec.	Working Circle	Remarks
B1	South East	N & M	Tehatta	Karimpur	Kalaberia-83,82	5	99	23°58'28.7"	88°38'55.6"	156	30.12.18	97	A	Excellent	N.A.	Dev.	
B1	South East	N & M	Berhampore (S)	Domkal	Katiamari-89	5	100	24°16'51.7"	88°34'57.8"	94	30.12.18	90	A	Excellent	N.A.	Dev.	
B1	South East	N & M	Kandi	Kandi	Anukha Bhanadara-82	10	99	23°56'39.2"	88°01'39.4"	83	30.12.18	89	A	Excellent	N.A.	Dev.	
B1	South West	EFD	Head Hura Extension	Purulia-II, Extension	Bhangra-143	10	100	23°21'52.74"	86°26'10.12"	95	12.11.18	92	A	Excellent	N.A.		
A2	South West	KNG(N)	Hura	Bishpuria	Chirugora-99	5	100	23°14'40.9"	86°42'32.8"	51	20.09.18	90	A	Excellent	150	Sal	
A2	South West	KNG(N)	Hura	Bishpuria	Samukgoria-103	5	99	23°16'34.4"	86°41'38.7"	51	20.09.18	90	A	Excellent	390	Dev.	
A2	South West	KNG(N)	Raghunathpur	Neturia	Pahargora-55	4	100	23°37'05.26"	86°44'36.05"	48	19.09.18	86	A	Excellent	200	Sal	
A2	South West	KNG(N)	Raghunathpur	Neturia	Ankduara-57	6	100	23°36'48.68"	86°44'58.47"	48	19.09.18	86	A	Excellent	200	Sal	
A3	South West	KNG(N)	Puncha	Damodarpur	Baraghuta-85	10	100	23°14'43.1"	86°43'28.8"	103	24.09.18	93	A	Excellent	285	Sal	
A3	South West	KNG(N)	Puncha	Jambad	Dharampur-16	10	100	23°11'92.9"	86°33'41.4"	89	21.09.18	90	A	Excellent	350	Dev.	
A3	South West	KNG(N)	Hura	Keshargarh	Chorgali-55	5	100	23°16'56.9"	86°33'13.8"	98	21.09.18	90	A	Excellent	180	Sal & Dev.	
A3	South West	KNG(N)	Raghunathpur	Raghunathpur-I	Senera-185	10	100	23°34'08.4"	86°42'41.54"	76	21.09.18	86	A	Excellent	300	Dev.	
A3	South West	KNG(N)	Puncha	Jambad	Jambad-35	25	100	23°13'31.5"	86°33'88.9"	75	22.09.18	86	A	Excellent	875	Dev.	

Model	Circle	DMU	FMU	Beat	Location	Area	SP	Lat. (N)	Long. (E)	Height	Date of Survey	PS	Cat.	Grade	Length of SMC works in RMT/hec.	Working Circle	Remarks
A3	South West	KNG(N)	Puncha	Panipathar	Deorang-11	20	100	23°03'56.8"	86°29'51.0"	76	23.09.18	86	A	Excellent	765	Dev.	
A3	South West	KNG(N)	Hura	Bishpuria	Ichamara-200	5	100	23°19'00.0"	86°42'57.7"	70	23.09.18	86	A	Excellent	140	Dev.	
A3	South West	KNG(N)	Hura	Bishpuria	Samukgoria-103	15	100	23°17'15.1"	86°41'56.2"	78	24.09.18	86	A	Excellent	900	Dev.	
A3	South West	KNG(N)	Hura	Hura	Phukriathole-196	20	99	23°19'24.3"	86°41'26.6"	44	25.09.18	83	A	Very Good	320	Dev.	
A2	South West	KNG(S)	Manbazar-I	Sindurpur	Majhihira-22	25	100	23°05'32.92"	86°32'25.54"	54	04.11.18, 05.11.18	90	A	Excellent	644	Dev.	
A3	South West	KNG(S)	Manbazar-II	Kumari	Nekra-227	10	100	23°51'88.4"	86°33'33.8"	108	08.11.18	93	A	Excellent	160	Dev.	
A3	South West	KNG(S)	Barabazar	Barabazar	Bhikhari Cheliama-108	50	100	23°00'96.3"	86°11'40.5"	91	06.11.18 to 08.11.18	90	A	Excellent	878	Dev.	
A3	South West	KNG(S)	Manbazar-I	Sindurpur	Majhihira-22	20	100	23°05'43.21"	86°32'21.02"	95	10.11.18	90	A	Excellent	547	Dev.	
A3	South West	KNG(S)	Manbazar-I	Sindurpur	Janara-24	10	100	23°02'43.41"	86°31'23.84"	96	11.11.18	90	A	Excellent	310	Dev.	
A3	South West	KNG(S)	Manbazar-I	Manbazar	Menidi-Banagram-121	10	100	23°07'33.5"	86°39'27.9"	83	09.11.18	86	A	Excellent	615	Dev.	
A2	South West	Purulia	Bagmundi	Kalimati	Bagti-34	20	100	23°15'43.46"	85°56'16.54"	78	30.09.18	97	A	Excellent	620	Dev.	
A2	South West	Purulia	Bagmundi	Bagmundi	Nischantapur-63	10	99	23°14'08.05"	86°00'44.05"	52	01.10.18	90	A	Excellent	700	Dev.	
A2	South West	Purulia	Jhalda	Kalma	Kalma-16	18	98	23°27'20.81"	85°55'46.77"	71	30.09.18	82	A	Very Good	444	Dev.	

Model	Circle	DMU	FMU	Beat	Location	Area	SP	Lat. (N)	Long. (E)	Height	Date of Survey	PS	Cat.	Grade	Length of SMC works in RMT/hec.	Working Circle	Remarks
A3	South West	Purulia	Jhalda	Kalma	Kalma-16	54	100	23°27'22.66"	85°56'06.23"	78	02.10.18, 03.10.18	86	A	Excellent	1089	Dev.	
A3	South West	Purulia	Jhalda	Kalma	Kudagara-13	15	99	23°28'30.37"	85°54'30.10"	76	04.10.18	86	A	Excellent	444	Dev.	
A3	South West	Purulia	Jhalda	Kalma	Kiribera-24	15	99	23°26'03.42"	85°55'20.37"	63	04.10.18, 05.10.18	86	A	Excellent	480	Dev.	
A3	South West	Purulia	Bagmundi	Bagmundi	Nischantapur-63	15	100	23°13'38.62"	86°00'32.50"	85	07.10.18	86	A	Excellent	816	Dev.	
A3	South West	Purulia	Bagmundi	Bagmundi	Charida-89	10	100	23°12'84.5"	86°02'69.5"	73	08.10.18	86	A	Excellent	320	Dev.	
A3	South West	Purulia	Kotshila	Simni	Karior-156	15	99	23°27'60.8"	85°56'56.0"	78	06.10.18	85	A	Very Good	522	Sal	
A3	South West	Purulia	Bagmundi	Bagmundi	Charida-89	17	100	23°12'50.90"	86°02'10.46"	58	08.10.18	83	A	Very Good	804	Dev.	
A3	South West	Purulia	Kotshila	Nowahatu	Khatanga-191	15	97	23°27'70.21"	85°04'07.09"	72	06.10.18, 07.10.18	75	A	Very Good	537	Sal	
A3	South West	Purulia	Jhalda	Jhalda	Ona-151	20	93	23°19'39.22"	85°58'08.12"	64	05.10.18	64	A	Good	321	Dev.	
A2	Western	Jhargram	Lodhasuli	Chandri-II	Keundisol-746	20	98	22°22'12.6"	87°58'05.2"	72	28.02.19	89	A	Excellent	394	Sal	
A3	Western	Jhargram	Manikpara	Balivasa	Kumari-642	6	99	22°21'27.0"	87°10'05.2"	108	04.03.19	90	A	Excellent	500	Dev	
A3	Western	Jhargram	Lodhasuli	Chandri-II	Khas Jangal-745	20	99	22°22'32.8"	86°58'32.0"	99	03.03.19	86	A	Excellent	470	Dev	
A3	Western	Jhargram	Lodhasuli	Chandri-II	Khas jangal-91, Auligeriya-912	20	92	22°20'42.6"	86°59'52.5"	62	01.03.19, 02.03.19	61	A	Good	345	Dev	

Model	Circle	DMU	FMU	Beat	Location	Area	SP	Lat. (N)	Long. (E)	Height	Date of Survey	PS	Cat.	Grade	Length of SMC works in RMT/hec.	Working Circle	Remarks
A2	Western	Kharagpur	Hijli	Hijli	Rangamatia-255	14	100	22°17'35.4"	87°18'21.7"	79	10.12.18	94	A	Excellent	3000	Sal	
A2	Western	Kharagpur	Nayagram	Nayagram	Radhapara-303	7	100	21°56'08.9"	87°08'45.6"	75	10.12.18	87	A	Excellent	1000	Sal	
A3	Western	Kharagpur	Kalaikunda	Sankrail	Jugisole-174	15	99	22°15'09.6"	87°09'00.3"	116	14.12.18	92	A	Excellent	495	Dev.	
A3	Western	Kharagpur	Kalaikunda	Bardanga	Baragohira-962, Sagarbanga-963, Jugisol-174	28	99	22°18'15.9"	87°05'56.1"	89	12.12.18	85	A	Very Good	437	Dev.	
A3	Western	Kharagpur	Keshorrekha	Baligeria	Khasjungle-96, Bhola-162 & Telia-161	10	99	21°58'54.5"	87°03'36.3"	91	13.12.18	84	A	Very Good	289	Dev.	
A3	Western	Kharagpur	Chandabila	Patina	Khasjungle-11	20	99	22°06'45.2"	87°01'12.7"	89	14.12.18	84	A	Very Good	512	Dev.	
A3	Western	Kharagpur	Nayagram	Panchkahania	Barakhakri-53	10	98	22°04'07.7"	87°04'43.6"	69	13.12.18	69	A	Good	395	Dev.	
A2	Western	Medinipur	Nayabasad	Akchara	Ukhla-358	7	100	22°46'40.2"	87°16'12.7"	66	04.10.18	90	A	Excellent	1800	Dev.	
A2	Western	Medinipur	Bhadutola	Moupal	Chaksrinathpur Chandra- 500, 238	5	100	22°29'54.4"	87°16'96.1"	71	27.09.18	87	A	Excellent	1800	Sal	
A2	Western	Medinipur	Chandra	Chandra	Metal-208	20	100	22°29'14.0"	87°11'24.5"	56	28.09.18, 29.09.18	86	A	Excellent	1800	Dev.	
A2	Western	Medinipur	Chandra	Chandra	Dainmari-68, Baramchati-96	5	100	22°27'28.7"	87°10'37.3"	62	30.09.18	86	A	Excellent	1800	Dev.	



Model	Circle	DMU	FMU	Beat	Location	Area	SP	Lat. (N)	Long. (E)	Height	Date of Survey	PS	Cat.	Grade	Length of SMC works in RMT/hec.	Working Circle	Remarks
A2	Western	Medinipur	Chandra	Chandra	Pidrasole-115, Sarengasole-115	10	99	22°26'42.2"	87°11'27.6"	53	01.10.18	86	A	Excellent	1800	Sal	
A2	Western	Medinipur	Chandrakona	Andharnayan	Keundi-728, Jamboni	27	100	22°44'42.2"	87°26'06.2"	54	06.10.18, 07.10.18	86	A	Excellent	1800	Sal	
A2	Western	Medinipur	Arabari	Arabari	Ghagra-450, Mahasole-384	20	99	22°40'24.7"	87°19'40.0"	56	08.10.18	85	A	Very Good	1800	Sal	
A2	Western	Medinipur	Chandra	Chandra	Sirshi-21	5	99	22°29'21.1"	87°08'24.5"	43	27.09.18	83	A	Very Good	1800	Dev.	
A2	Western	Medinipur	Arabari	Arabari	Mahasole-348, Ghagra-450	22	99	22°40'59.6"	87°18'52.3"	50	07.10.18, 08.10.18	82	A	Very Good	1800	Dev.	
A2	Western	Medinipur	Chandrakona	Andharnayan	Patasole-929	8	100	22°43'28.4"	87°28'14.7"	49	05.10.18	82	A	Very Good	1800	Sal	
A2	Western	Medinipur	Medinipur	Baghasole	Khasjungle-424	31	100	22°30'54.4"	87°23'20.6"	82	12.10.18 to 14.10.18	80	A	Very Good	1800	Dev.	
A3	Western	Medinipur	Chandrakona	Kanthaldiha	Kanchdahari-712	10	99	22°45'57.1"	87°23'38.5"	102	04.10.18	89	A	Excellent	413	Dev.	
A3	Western	Medinipur	Arabari	Socio	Majigarh-15, Sapadiha-7	22	99	22°39'51.8"	87°31'37.9"	120	10.10.18, 11.10.18	88	A	Excellent	500	Dev.	
A3	Western	Medinipur	Bhadutola	Bhadutola	K.J.-513	10	100	22°29'29.0"	87°19'58.8"	88	28.09.18	86	A	Excellent	248	Dev.	
A3	Western	Medinipur	Arabari	Arabari	Buramara-688	13	99	22°40'52.3"	87°23'03.5"	96	09.10.18	85	A	Very Good	480	Dev.	
A3	Western	Medinipur	Bhadutola	Moupal	Chaksrinathpur-500, Chandra-238	14	99	22°29'14.0"	87°11'24.5"	91	29.09.18	85	A	Very Good	248	Dev.	

Model	Circle	DMU	FMU	Beat	Location	Area	SP	Lat. (N)	Long. (E)	Height	Date of Survey	PS	Cat.	Grade	Length of SMC works in RMT/hec.	Working Circle	Remarks
A3	Western	Medinipur	Bhadutola	Bhadutola	Kismat bankati, Khas Jangal-523	20	99	22°30'03.5"	87°19'38.9"	92	01.10.18, 02.10.18	85	A	Very Good	323	Dev.	
A3	Western	Medinipur	Pirakata	Ranga	Hirasole-166	7.5	99	22°38'18.4"	87°12'17.0"	62	11.10.18	82	A	Very Good	380	Sal	
A3	Western	Medinipur	Pirakata	Ranga	Ghagrasole-168	7	91	22°37'03.4"	87°12'39.3"	44	12.10.18	82	A	Very Good	NIL	Sal	
A3	Western	Medinipur	Pirakata	Bhimsole	Pathri-113, Srikrishnapur-111	20	99	22°31'59.4"	87°09'26.9"	79	13.10.18 to 15.10.18	82	A	Very Good	460	Dev.	
A3	Western	Medinipur	Pirakata	Bhimsole	Dharampur-94/141	5	99	22°32'18.3"	87°09'39.8"	60	13.10.18	79	A	Very Good	220	Sal	
A3	Western	Medinipur	Medinipur	Baghasole	Baghasole-428	10	100	22°30'27.2"	87°23'37.2"	73	28.09.18	79	A	Very Good	448	Dev.	
A3	Western	Medinipur	Chandra	Chandra	Dainmari-68, Tiakati-Baramchati-96	10	99	22°27'28.7"	87°10'37.3"	58	03.10.18	78	A	Very Good	420	Dev.	
A3	Western	Medinipur	Bhadutola	Moupal	Darimasole-197	6	99	22°30'14.0"	87°13'08.3"	56	30.09.18	78	A	Very Good	218	Sal	
A3	Western	Medinipur	Medinipur	Baghasole	Khas Jangal-424, Baghasole-428	4	99	22°30'49.4"	87°03'08.1"	59	27.09.18	76	A	Very Good	480	Dev.	
A3	Western	Medinipur	Medinipur	Baghasole	Khasjungle-424	10	99	22°31'50.7"	87°23'10.0"	52	30.09.18	76	A	Very Good	470	Dev.	
A3	Western	Medinipur	Medinipur	Baghasole	Baghasole-428	6	99	22°30'16.8"	87°23'10.3"	59	29.09.18	76	A	Very Good	430	Dev.	
A3	Western	Medinipur	Chandrakona	Kanthaldiha	Jamua-710	15	98	22°45'38.8"	87°22'32.4"	65	03.10.18	71	A	Very Good	417	Dev.	

Model	Circle	DMU	FMU	Beat	Location	Area	SP	Lat. (N)	Long. (E)	Height	Date of Survey	PS	Cat.	Grade	Length of SMC works in RMT/hec.	Working Circle	Remarks
A3	Western	Medinipur	Pirakata	Ranga	Jamirgota-15	33	96	22°38'05.9"	87°08'37.1"	56	08.10.18 to 10.10.18	67	A	Good	384	Sal	
A3	Western	Medinipur	Chandra	Chandra	Metal-208, Bhurkundisole-210	10	95	22°29'05.4"	87°11'41.9"	41	02.10.18	57	A	Good	430	Dev.	
A2	Western	Rupnarayan	Goaltore	Barapatasole	Bankisole-73	10	99	22°42'59.6"	87°06'24.5"	59	16.11.18	88	A	Excellent	2056	Sal	
A2	Western	Rupnarayan	Amlagora	Pathrisole	Kasthagora-649	10	100	22°48'37.6"	87°23'23.0"	70	24.11.18, 25.11.18	87	A	Excellent	1800	Sal	
A2	Western	Rupnarayan	Mahalisai	Ruaparghagra	Jamdahara-1	4.5	99	22°50'40.6"	87°04'28.1"	53	15.11.18	86	A	Excellent	538	Sal	
A2	Western	Rupnarayan	Goaltore	Barapatasole	Sirishboni-74	27	99	22°42'25.3"	87°05'50.7"	59	16.11.18	86	A	Excellent	1800	Sal	
A2	Western	Rupnarayan	Garhbeta	Dhadika	Kharikasuli-552	10	98	22°55'53.2"	87°20'16.4"	59	13.11.18	84	A	Very Good	1800	Sal	
A2	Western	Rupnarayan	Hoomgarh	Hoomgarh	Birbandhi-361	20	97	22°48'51.8"	87°14'52.4"	58	18.11.18	84	A	Very Good	1753	Sal	
A2	Western	Rupnarayan	Amlagora	Raskundu	Chunirchak-176, Kadokat-909, Dukhiasole-910	10	99	22°48'52.9"	87°27'20.0"	54	21.11.18	83	A	Very Good	1800	Sal	
A2	Western	Rupnarayan	Amlagora	Raskundu	Dhanghori-59, Rosiary-58	12	100	22°47'18.0"	87°28'57.2"	65	22.11.18, 23.11.18	83	A	Very Good	1800	Sal	
A2	Western	Rupnarayan	Mahalisai	Ruaparghagra	Barobari-14, Ruparghagra-13	9.5	98	22°48'26.7"	87°04'11.3"	46	15.11.18	82	A	Very Good	480	Sal	
A2	Western	Rupnarayan	Hoomgarh	Baromasia	Baribot-233	11	98	22°47'47.9"	87°13'06.8"	50	15.11.18	80	A	Very Good	1800	Sal	
A2	Western	Rupnarayan	Garhbeta	Shyamnagar	Namojoba-822	15	97	22°54'36.2"	87°26'21.0"	49	14.11.18	68	A	Good	1800	Sal	

Model	Circle	DMU	FMU	Beat	Location	Area	SP	Lat. (N)	Long. (E)	Height	Date of Survey	PS	Cat.	Grade	Length of SMC works in RMT/hec.	Working Circle	Remarks
A2	Western	Rupnarayan	Hoomgarh	Amlasuli	Ghagra-26, Peruaband-28	20	94	22°50'52.0"	87°08'22.7"	46	17.11.18	59	A	Good	1800	Sal	
A3	Western	Rupnarayan	Garhbeta	Shyamnagar	Koyma-616	10	100	22°56'21.6"	87°22'54.6"	143	09.11.18	96	A	Excellent	508	Dev.	
A3	Western	Rupnarayan	Amlagora	Pathrisole	Kasthagora-649	5	100	22°48'41.2"	87°23'25.6"	139	09.11.18	94	A	Excellent	500	Dev.	
A3	Western	Rupnarayan	Goaltore	Ramgarh	Jangalkhas-688	15	100	22°49'57.4"	87°09'19.0"	120	12.11.18	93	A	Excellent	474	Dev.	
A3	Western	Rupnarayan	Amlagora	Raskundu	Dukhiasole-910	6	100	22°49'26.1"	87°28'07.4"	121	07.11.18	91	A	Excellent	440	Dev.	
A3	Western	Rupnarayan	Amlagora	Raskundu	Rosary-58, Hurhuria-51	12	99	22°48'06.4"	87°28'36.3"	120	07.11.18	91	A	Excellent	358	Dev.	
A3	Western	Rupnarayan	Amlagora	Raskundu	Tilara-60	22	99	22°47'25.2"	87°29'45.4"	117	08.11.18	91	A	Excellent	248	Dev.	
A3	Western	Rupnarayan	Mahalisai	Ruaparghagra	Gangarampur-12	10	99	22°49'18.2"	87°04'55.8"	103	11.11.18	89	A	Excellent	465	Dev.	
A3	Western	Rupnarayan	Mahalisai	Mahalisai-II	Dhamcha-141	12	100	22°44'05.8"	87°12'31.4"	108	11.11.18	89	A	Excellent	484	Dev.	
A3	Western	Rupnarayan	Goaltore	Barapatasole	Nadaria-2	6	99	22°40'05.2"	87°07'16.7"	90	12.11.18	86	A	Excellent	460	Dev.	
A3	Western	Rupnarayan	Garhbeta	Shyamnagar	Pachadohara-618	5	99	22°56'11.7"	87°23'43.5"	96	10.11.18	84	A	Very Good	448	Dev.	
A3	Western	Rupnarayan	Mahalisai	Adalia	Dubrajpur-84, Nischintapur	2	100	22°47'22.2"	87°09'52.1"	78	11.11.18	82	A	Very Good	508	Dev.	
A3	Western	Rupnarayan	Garhbeta	Chakparboti	Mahanpur-838	15	99	22°53'45.7"	87°28'26.1"	84	09.11.18	80	A	Very Good	183	Dev.	
A3	Western	Rupnarayan	Garhbeta	Shyamnagar	Namojoba-822	15	98	22°54'50.0"	87°25'39.5"	95	10.11.18	73	A	Very Good	504	Dev.	

## Detail monitoring data, 4<sup>th</sup> year, 2015-16 plantation

Area in Ha.& height in cm

Model	circle	DMU	FMU	Beat	Location	Area	1st year SP	4th year SP	Lat. (N)	Long. (E)	Height	Date of Survey	PS	Cat.	Grade	Length of SMC works in RMT/hec.	Working Circle	Remarks
A1	Central	Bankura (North)	Beliatore	Khag	Banabendar	20	94	79	087°13'50.9"	23°16'32.2"	516	02.11.18	45	A	Average	378	Dev.	
A2	Central	Bankura (North)	Radhanagar	Bhora	Bhora-24	10	96	100	087°23'07.5"	23°10'08.4"	239	15.12.18	87	A	Excellent	384	Dev.	
A2	Central	Bankura (North)	Beliatore	Kundulia	Nandabhanga-213	10	100	97	087°15'34.1"	23°10'42.0"	229	02.11.18	79	A	Excellent	375	Dev.	
A2	Central	Bankura (North)	Patrasayer	Kushodweep	Satgechhe-135, Shankarpur-147, Bhairabpur-148	15	98	92	087°26'50.4"	23°09'47.6"	191	29.11.18	76	A	Excellent	375	Dev.	
A2	Central	Bankura (North)	G. Ghati	Mkhradihi	Rajamela-64	15	81	81	087°04'12.2"	23°25'50.8"	163	15.11.18	68	A	Very Good	450	Dev.	
A3	Central	Bankura (North)	Radhanagar	Bhora	Chakchuamasina-19	15	98	99	087°22'01.0"	23°10'28.0"	510	02.12.18	79	A	Excellent	422	Dev.	
A3	Central	Bankura (North)	Radhanagar	Bhora	Bhora-24	6	97	98	087°23'10.5"	23°10'17.1"	516	13.12.18	80	A	Excellent	430	Dev.	
A3	Central	Bankura (North)	Saltora	Murlu	Siarbaid-106	14	98	98	086°54'38.6"	23°29'43.7"	448	30.11.18	76	A	Excellent	370	Dev.	
A3	Central	Bankura (North)	Radhanagar	Radhanagar	Bankali-43	16	98	97	087°18'37.5"	23°09'36.7"	522	03.12.18	79	A	Excellent	398	Dev.	
A3	Central	Bankura (North)	Radhanagar	Panchal	Bhangabandh-1	15	98	96	087°17'01.7"	23°12'51.6"	417	02.12.18	76	A	Excellent	396	Dev.	
A3	Central	Bankura (North)	Beliatore	Beliatore	Raiganj Madhabpur	15	99	96	087°12'29.0"	23°19'32.6"	332	01.11.18	72	A	Very Good	398	Dev.	

Model	circle	DMU	FMU	Beat	Location	Area	1st year SP	4th year SP	Lat. (N)	Long. (E)	Height	Date of Survey	PS	Cat.	Grade	Length of SMC works in RMT/ hec.	Working Circle	Remarks
A3	Central	Bankura (North)	Chhatna	Jhantipahari	Kalipahari-41	12	99	94	086°52'13.8"	23°25'28.1"	510	01.12.18	66	A	Very Good	386	Dev.	
A3	Central	Bankura (North)	Bnakura North	Salboni	Radharamanpur-30	17	98	94	087°01'49.6"	23°18'02.7"	401	28.11.18	63	A	Very Good	388	Dev.	
A3	Central	Bankura (North)	Radhanagar	Balarampur	Chuaamasina-17	18	98	91	087°20'40.4"	23°11'06.8"	303	17.12.18	68	A	Very Good	408	Dev.	
A3	Central	Bankura (North)	Saltora	Saltora	Bhukundathol-172	37.5	98	91	086°58'46.7"	23°33'37.2"	355	16.12.18	59	A	Good	368	Dev.	
A3	Central	Bankura (North)	Beliatore	Kundulia	Nandabhanga-213	15	96	90	087°15'44.0"	23°10'42.4"	373	03.11.18	59	A	Good	376	Dev.	
A3	Central	Bankura (North)	Sonamukhi	Indkata	Dhansimla-151	16	86	89	087°27'49.3"	23°15'45.4"	433	28.11.18	62	A	Very Good		Dev.	
A3	Central	Bankura (North)	G. Ghati	Ramharipur	Kenduabari-40	12	99	88	087°08'15.9"	23°19'34.1"	423	05.11.18	63	A	Very Good	392	Dev.	
A3	Central	Bankura (North)	Bankura North	Belboni	Rasik Nagarpur-299, Agaya Nandanpur-294, Kalapahar-296	15	94	88	087°09'15.3"	23°17'28.6"	349	03.11.18	59	A	Good	378	Dev.	
A3	Central	Bankura (North)	Beliatore	Khag	Jorsal-164, Kodalia-312	15	72	87	087°12'36.4"	23°15'23.0"	368	01.11.18	59	A	Good	362	Dev.	
A3	Central	Bankura (North)	Saltora	Murlu	Murlu-105	16	96	84	086°54'11.0"	23°31'36.7"	451	30.11.18	56	A	Good	364	Dev.	
A3	Central	Bankura (North)	Patrasayer	Kushodweep	Satgechhe-135, Shankarpur-147, Bhairabpur-148	23	97	82	087°27'10.0"	23°09'47.4"	334	29.11.18	71	A	Very Good	372	Dev.	
A3	Central	Bankura (North)	Chhatna	Chhatna	Senligeria-105	15	92	81	086°59'59.9"	23°19'26.9"	390	01.12.18	48	A	Good	398	Dev.	

Model	circle	DMU	FMU	Beat	Location	Area	1st year SP	4th year SP	Lat. (N)	Long. (E)	Height	Date of Survey	PS	Cat.	Grade	Length of SMC works in RMT/hec.	Working Circle	Remarks
A3	Central	Bankura (North)	G. Ghati	Mkhradihi	Rajamela-64	28	89	79	087°04'07.4"	23°25'56.2"	352	04.11.18	48	A	Good	388	Dev.	
A1	Central	Bankura (South)	Indpur	Indpur	Bondeuli-96, Mournachna-97	15	85	90	086°51'38.0"	23°06'41.5"	517	25.10.18	68	A	Very Good	396	Dev.	
A2	Central	Bankura (South)	Indpur	Indpur	Bondeuli-96, Mournachna-97	15	86	98	086°51'51.5"	23°06'27.2"	253	25.10.18	72	A	Very Good	438	Dev.	
A3	Central	Bankura (South)	Khatra	Khatra-I	Bantilla-225	14	98	96	086°51'27.8"	22°57'28.9"	531	13.12.18	80	A	Excellent	370	Dev.	
A3	Central	Bankura (South)	Simlapal	Simlapal	Karakanali-119	10	97	96	087°05'06.9"	22°59'28.1"	479	14.12.18	80	A	Excellent	380	Dev.	
A3	Central	Bankura (South)	Hirbandh	Hirbandh-I	Goborda-152	30	95	96	086°49'25.8"	23°00'06.2"	356	12.12.18	74	A	Very Good	384	Dev.	
A3	Central	Bankura (South)	Indpur	Indpur	Bondeuli-96, Mayurachna-97	20	87	95	086°51'45.2"	23°06'50.6"	520	25.10.18	81	A	Excellent	376	Dev.	
A3	Central	Bankura (South)	Simlapal	Boricha	Rangametia-133, Moulakunda-129	20	97	95	087°08'38.5"	22°56'16.1"	474	14.12.18	80	A	Excellent	398	Dev.	
A3	Central	Bankura (South)	Hirbandh	Hirbandh-II	Ashatora-36	10	98	95	086°47'30.0"	23°04'52.9"	515	13.12.18	68	A	Very Good	366	Dev.	
A3	Central	Bankura (South)	Khatra	Keshia	Khayerboni-248, Parashidanya-247	10.2	95	92	086°57'54.2"	22°58'12.1"	501	15.12.18	67	A	Very Good	372	Dev.	
A3	Central	Bankura (South)	Bankura	Ratanpur	Mandarboni-38, Digsuli-14	30	91	90	087°04'24.1"	23°07'24.1"	275	30.10.18	52	A	Good	384	Dev.	
A3	Central	Bankura (South)	Indpur	Hatogram	Ledapalsh-28, Madhabpur-29, Sayerdi-30	60	89	88	086°49'23.2"	23°11'43.0"	279	27.10.18	58	A	Good	388	Dev.	
A3	Central	Bankura (South)	Bankura	Punisale	Digsuli-14	30	87	87	087°03'29.8"	23°08'31.3"	306	29.10.18	52	A	Good	392	Dev.	



Model	circle	DMU	FMU	Beat	Location	Area	1st year SP	4th year SP	Lat. (N)	Long. (E)	Height	Date of Survey	PS	Cat.	Grade	Length of SMC works in RMT/ hec.	Working Circle	Remarks
A3	Central	Bankura (South)	Bankura	Ratanpur	Digsuli-14, Chakgopalpur-16	20	92	83	087°01'05.4"	23°07'46.9"	83	31.10.18	42	A	Average	374	Dev.	
A3	Central	Bankura (South)	Bankura	Punisale	Aguribandh Punisole-55	20	90	80	087°06'34.7"	23°07'26.3"	311	31.10.18	36	A	Average	386	Dev.	
A1	Central	Panchet	Bishnupur	Bishnupur-II	Kharbaribodni-269	10	96	92	087°14'43.0"	23°02'35.0"	523	02.03.19	66	A	Very Good	396	Dev.	
A2	Central	Panchet	Bishnupur	Bishnupur-II	Chak Bagmari-267	10	99	99	087°16'20.6"	23°02'44.3"	349	13.02.19	81	A	Excellent	458	Sal	
A2	Central	Panchet	Bishnupur	Bishnupur-II	Baghakhulia-259	10	90	94	087°14'55.2"	23°03'54.7"	175	14.02.19	64	A	Very Good	468	Sal	
A2	Central	Panchet	Bishnupur	Bishnupur-II	Bankinala-287	10	98	89	087°14'20.0"	23°02'48.0"	223	12.02.19	68	A	Very Good	452	Sal	
A2	Central	Panchet	Joypur	Adhkata	Adhkata-64	20	99	88	087°27'39.0"	22°57'03.9"	164	13.02.19	60	A	Good	398	Dev.	
A2	Central	Panchet	Bankadaha	Bankadaha	Dundur-116	20	94	79	087°22'01.9"	23°00'56.6"	248	12.02.19	57	A	Good	466	Sal	
A2	Central	Panchet	Bishnupur	Bishnupur-II	Ramanchuarpur-268	10	99	55	087°15'57.5"	23°04'34.4"	201	16.02.19	36	C	Average	460	Sal	
A3	Central	Panchet	Joypur	Joypur	Junglemahal-85	10	98	98	087°26'09.1"	23°04'08.0"	510	15.02.19	80	A	Excellent	402	Dev.	
A3	Central	Panchet	Bankadaha	Mparsole	Chakmparsole-160	10	99	98	087°24'54.1"	22°27'29.0"	519	18.02.19	80	A	Excellent	392	Dev.	
A3	Central	Panchet	Bankadaha	Bankadaha	Dhaboni-136	13	99	97	087°19'16.5"	22°58'56.8"	511	18.02.19	80	A	Excellent	388	Dev.	
A3	Central	Panchet	Bankadaha	Peardoba	Satmouli-125	10	98	97	087°16'02.4"	22°59'09.0"	359	25.02.19	72	A	Very Good	400	Dev.	
A3	Central	Panchet	Bankadaha	Peardoba	Majuria Prasadpur-121	10	97	96	087°14'14.8"	22°59'51.1"	313	25.02.19	69	A	Very Good	386	Dev.	
A3	Central	Panchet	Bishnupur	Bishnupur-II	Chak Bagmari-267	12	100	95	087°16'07.2"	23°02'33.8"	470	25.02.19	79	A	Excellent	362	Dev.	
A3	Central	Panchet	Bishnupur	Bishnupur-II	Bhedua-291	11	92	95	087°16'26.2"	23°01'37.7"	516	28.02.19	79	A	Excellent	396	Dev.	

Model	circle	DMU	FMU	Beat	Location	Area	1st year SP	4th year SP	Lat. (N)	Long. (E)	Height	Date of Survey	PS	Cat.	Grade	Length of SMC works in RMT/hec.	Working Circle	Remarks
A3	Central	Panchet	Bishnupur	Bishnupur-I	Bankati, Kusumbani-99	20	97	94	087°17'43.8"	23°02'55.9"	359	16.02.19	68	A	Very Good	374	Dev.	
A3	Central	Panchet	Joypur	Adhkata	Dangamakrandapur-85	28	98	94	087°26'21.3"	22°56'58.9"	344	17.02.19	64	A	Very Good	384	Dev.	
A3	Central	Panchet	Joypur	Machantala	Junglemahal-85	10	96	94	087°23'02.2"	23°04'18.1"	364	18.02.19	60	A	Good	378	Dev.	
A3	Central	Panchet	Bishnupur	Bishnupur-II	Bankinala-287	10	94	93	087°13'49.6"	23°02'20.3"	506	28.02.19	67	A	Very Good	386	Dev.	
A3	Central	Panchet	Joypur	Machantala	Junglemahal-50	10	97	92	087°22'54.5"	23°04'37.7"	518	18.02.19	67	A	Very Good	386	Dev.	
A3	Central	Panchet	Bishnupur	Bishnupur-II	Baghakhulia-259	10	88	91	087°14'42.4"	23°03'49.6"	505	01.03.19	66	A	Very Good	390	Dev.	
A3	Central	Panchet	Bankadaha	Amdangra	Murakali-134	15	95	90	087°13'46.8"	22°56'15.7"	353	27.02.19	59	A	Good	388	Dev.	
A3	Central	Panchet	Onda	Chingani	Dhabomi-50, Chingari-161	90	82	90	087°08'07.8"	23°04'08.7"	335	21.02.19 to 23.02.19	59	A	Good	404	Dev.	
A3	Central	Panchet	Bishnupur	Chougan	Chougan-102	12	94	90	087°19'32.3"	23°02'34.8"	199	28.02.19	52	A	Good	362	Dev.	
A3	Central	Panchet	Bankadaha	Bankadaha	Chhotobankadaha-148, Dhabani-136	62	95	89	087°18'33.8"	22°58'20.1"	389	20.02.19	59	A	Good	372	Dev.	
A3	Central	Panchet	Joypur	Adhkata	Rangamati-74/75	20	94	86	087°27'38.4"	23°54'53.1"	500	14.02.19	67	A	Very Good	406	Dev.	
A3	Central	Panchet	Bishnupur	Bishnupur-II	Ramanchuarapur-268	12	97	86	087°16'07.1"	23°04'21.9"	499	27.02.19	67	A	Very Good	368	Dev.	
A3	Central	Panchet	Bishnupur	Hereparbat	Radhadamadarpur-75	10	87	83	087°22'18.2"	23°04'20.2"	497	01.03.19	66	A	Very Good	400	Dev.	
A3	Central	Panchet	Joypur	Adhkata	Adhkata-64	22	98	83	087°27'48.7"	22°57'53.8"	525	15.02.19	50	A	Good	398	Dev.	
A3	Central	Panchet	Onda	Chingani	Dhabomi-50	10	91	74	087°14'43.04"	23°02'35.0"	351	02.03.19	41	B	Average	402	Dev.	

Model	circle	DMU	FMU	Beat	Location	Area	1st year SP	4th year SP	Lat. (N)	Long. (E)	Height	Date of Survey	PS	Cat.	Grade	Length of SMC works in RMT/works in hec.	Working Circle	Remarks
A3	Central	Panchet	Bishnupur	Bishnupur-II	Kharbaribodni-269	14	95	62	087°14'56.5"	23°02'38.3"	319	26.02.19	27	B	Poor	372	Dev.	
A1	South East	Birbhum	Dubrajpur	Hetampur	Gopalnagar-30	5	95	95	087°20'44.1"	23°50'53.6"	421	10.01.19	83	A	Excellent	440	Dev	
A2	South East	Birbhum	Dubrajpur	Khairasole	Jahidpur, Bharjol & Hatikata	20	31	74	087°15' 16.0"	23°50'07.7"	81	11.01.19	56	B	Good	460	Sal	
A3	South East	Birbhum	Rajnagar	Aligarh	Mahishagram-73	10	98	94	087°21'31.3"	23°59'45.8"	300	12.01.19	76	A	Excellent	440	Dev	
A3	South East	Birbhum	Suri	Chhora	Susnibona-186 & Chhatargachi-187	20	96	90	087°27'07.3"	23°55'22.2"	176	10.01.19	68	A	Very Good	450	Dev	
A3	South East	Birbhum	Rajnagar	Rajnagar	Abadnagar-43	15	90	89	087°17'48.8"	23°53'24.1"	243	12.01.19	62	A	Very Good	440	Dev	
A3	South East	Birbhum	Dubrajpur	Khairasole	Uparbandh-46, Raipur-47 & Harinajole-19	10	89	84	087°16'08.9"	23°50'123.0"	231	11.01.19	57	A	Good	420	Dev	
A3	South East	Birbhum	Dubrajpur	Hetampur	Gopalnagar-30	15	92	70	087°20'35.7"	23°50'57.3"	236	10.01.19	42	B	Average	420	Dev	
A1	South East	Burdwan	Panagarh	Kanksa	Kanksa-71, Ijjatganj-86	15	96	96	087°27'08.7"	23°28'54.4"	426	03.01.19	97	A	Excellent	460	Dev	
A2	South East	Burdwan	Guskara	Bhalki	Jadavganj-104	10	92	98	087°31'45.5"	23°28'16.4"	189	06.01.19	97	A	Excellent	450	Dev	
A2	South East	Burdwan	Panagarh	Aduria	Majuria, Harinarayanpur	10	96	91	087°30'22.3"	23°33'12.5"	178	04.01.19	97	A	Excellent	460	Sal	
A2	South East	Burdwan	Durgapur	Molandighi	Rakshitpur	10	97	88	087°26'03.4"	23°34'25.0"	181	05.01.19	84	A	Excellent	440	Dev	
A3	South East	Burdwan	Durgapur	Molandighi	Akandara	15	85	98	087°23'08.9"	23°35'37.5"	393	25.09.18	77	A	Excellent	437	Dev	

Model	circle	DMU	FMU	Beat	Location	Area	1st year SP	4th year SP	Lat. (N)	Long. (E)	Height	Date of Survey	PS	Cat.	Grade	Length of SMC works in RMT/ hec.	Working Circle	Remarks
A3	South East	Burdwan	Durgapur	Shibpur	Bistupur	10	91	97	087°24'24.7"	23°37'30.4"	288	05.01.19	90	A	Excellent	450	Dev	
A3	South East	Burdwan	Guskara	Pratappur	Amrargarh	20	93	97	087°34'54.5"	23°26'44.3"	296	06.01.19	90	A	Excellent	450	Dev	
A3	South East	Burdwan	Guskara	Bhalki	Jadavganj	11.5	97	95	087°39'37.7"	23°28'29.0"	361	06.01.19	80	A	Excellent	440	Dev	
A3	South East	Burdwan	Durgapur	Basudha	Raghunathpur	10	92	92	087°28'41.7"	23°34'35.2"	373	21.09.18	59	A	Good	NIL	Dev	
A3	South East	Burdwan	Panagarh	Aduria	Rangakhila-29	17	92	91	087°31'12.4"	23°31'55.1"	278	05.01.19	77	A	Excellent	450	Dev	
A3	South East	Burdwan	Durgapur	Shibpur	Jatgoria-19	15	92	91	087°23'28.5"	23°37'20.4"	362	22.09.18	60	A	Good	400	Dev	
A3	South East	Burdwan	Panagarh	Aduria	Majuria, Harinarayanpur	13	98	90	087°29'43.8"	23°33'18.1"	285	03.01.19	77	A	Excellent	450	Dev	
A3	South East	Burdwan	Panagarh	Aduria	Majuria, Harinarayanpur	30	90	72	087°29'52.4"	23°33'21.0"	205	04.01.19	53	B	Good	450	Dev	
A1	South East	Durgapur	Ukhra	Tilaboni	Parulia-44	5	93	98	087°19'04.9"	23°36'52.3"	500	13.01.19	100	A	Excellent	450	Dev	
A2	South East	Durgapur	Ukhra	Kantaberia	Madhaiganj	25	96	92	087°21'16.9"	23°38'42.6"	139	13.01.19	93	A	Excellent	430	Dev.	
A3	South East	Durgapur	Asansol	Hadla	Bathanbari	20	91	87	086°49'49.5"	23°48'14.1"	271	14.01.19	77	A	Excellent	440	Dev.	
A2	South West	KNG(N)	Raghunathpur	Santuri	Pathar Bandh-49	10	98	88	086°49'80.5"	23°33'33.8"	146	27.09.18	79	A	Excellent	180	Sal	
A2	South West	KNG(N)	Puncha	Jambad	Jambad-35	15	99	88	086°33'38.7"	23°13'32.8"	156	26.09.18, 27.09.18	57	A	Good	320	Dev.	
A2	South West	KNG(N)	Puncha	Jambad	Pirrah-15	15	98	86	086°32'32.7"	23°10'58.4"	195	26.09.18	65	A	Very Good	240	Dev.	

Model	circle	DMU	FMU	Beat	Location	Area	1st year SP	4th year SP	Lat. (N)	Long. (E)	Height	Date of Survey	PS	Cat.	Grade	Length of SMC works in RMT/ hec.	Working Circle	Remarks
A3	South West	KNG(N)	Puncha	Jambad	Jambad-35	35	99	86	086°33'32.6"	23°13'39.4"	398	29.09.18	64	A	Very Good	560	Dev.	
A3	South West	KNG(N)	Hura	Keshargarh	Keshargarh-54	45	95	8	086°33'06.6"	23°16'20.5"	271	28.09.18	10	D	Poor	810	Sal & Dev.	
A3	South West	KNG(S)	Manbazar-I	Sindurpur	Bhalubasa-160	5	95	94	086°34'47.7"	23°04'43.5"	321	03.11.18	76	A	Excellent	30	Dev.	
A3	South West	KNG(S)	Manbazar-I	Sindurpur	Marnagora-36	8	93	92	086°31'48.7"	23°07'53.2"	396	29.10.18	84	A	Excellent	210	Dev.	
A3	South West	KNG(S)	Manbazar	Sindurpur	Kumardih-258	12	92	92	086°37'26.0"	23°05'25.4"	343	29.10.18	80	A	Excellent	108	Dev.	
A3	South West	KNG(S)	Manbazar-I	Sindurpur	Kashidi-160	30	92	91	086°35'46.8"	23°05'19.0"	449	01.11.18, 02.11.18	84	A	Excellent	552	Dev.	
A3	South West	KNG(S)	Manbazar-I	Sindurpur	Kadma-23	8	93	91	086°31'03.8"	23°03'58.3"	427	03.11.18	84	A	Excellent	240	Dev.	
A3	South West	KNG(S)	Manbazar-I	Sindurpur	Kashidi-160	30	91	89	086°35'39.2"	23°05'58.8"	442	30.10.18, 31.10.18	78	A	Excellent	360	Dev.	
A3	South West	KNG(S)	Manbazar-I	Sindurpur	Kunardih-37	12	88	87	086°32'45.3"	23°07'31.1"	388	30.10.18	80	A	Excellent	560	Dev.	
A1	Western	Kharagpur	Hijli	Khajra	Kapasgeria-13	8	100	93	087°14'40.8"	22°12'31.8"	256	18.12.18	61	A	Very Good	500	Dev.	
A1	Western	Kharagpur	Hijli	Khajra	Gilageri-8	6	100	90	087°14'41.2"	22°12'43.5"	257	18.12.18	61	A	Very Good	472	Dev.	
A1	Western	Kharagpur	Belda	Kashipur	Jamuna-221	7	97	88	087°19'29.4"	22°10'08.1"	358	18.12.18	60	A	Good	368	Dev.	
A1	Western	Kharagpur	Hijli	Khajra	Ghretogram-1	10	100	73	087°11'53.3"	22°13'38.6"	267	17.12.18	41	B	Average	496	Dev.	
A2	Western	Kharagpur	Hijli	Porapara	Porapara-172	11	100	91	087°15'31.1"	22°15'05.3"	193	20.12.18	80	A	Excellent	498	Sal	
A2	Western	Kharagpur	Hijli	Hijli	Kesuria-283	20	100	83	087°19'30.0"	22°15'31.2"	225	19.12.18	71	A	Very Good	434	Sal	
A3	Western	Kharagpur	Hijli	Hijli	Rangametia-255	20	100	98	087°18'37.7"	22°17'29.7"	333	17.12.18	77	A	Excellent	508	Dev.	

Model	circle	DMU	FMU	Beat	Location	Area	1st year SP	4th year SP	Lat. (N)	Long. (E)	Height	Date of Survey	PS	Cat.	Grade	Length of SMC works in RMT/ hec.	Working Circle	Remarks
A3	Western	Kharagpur	Hijli	Hijli	Paschim Pathri-261	30	100	87	087°17'58.1"	22°17'35.8"	292	21.12.18	61	A	Very Good	511	Dev.	
A1	Western	Medinipur	Chandrakona	Andharnayan	Sakhabai-927	15	99	97	087°27'16.7"	22°44'06.4"	255	21.09.18	76	A	Excellent	472	Dev.	
A2	Western	Medinipur	Chandra	Gurguripal	KhasJangal Tralokyapur-130	10	98	74	087°12'19.7"	22°26'19.5"	66	15.09.18	43	B	Average	350	Sal	
A2	Western	Medinipur	Nayabasad	Nayabasad	Damodarpur-316	20	98	70	087°16'24.9"	22°42'31.5"	139	26.09.18	49	B	Good	386	Sal	
A2	Western	Medinipur	Bhadutola	Moupal	Sawra-235, Chandra-238	15	96	60	087°16'30.4"	22°28'32.8"	62	23.09.18	24	B	Poor	244	Sal	
A2	Western	Medinipur	Arabari	Arabari	Mahasole-384, Ghagra	20	99	57	087°18'57.2"	22°40'42.4"	56	05.10.18, 06.10.18	21	C	Poor	420	Sal	
A2	Western	Medinipur	Godapiasal	Karamsole	Pirakuli-278	15	96	54	087°15'16.5"	22°36'45.5"	100	24.09.18	27	C	Poor	448	Sal	
A2	Western	Medinipur	Lalgarh	Jhitka	Jhitka-782, KhasJangal-779	10	98	39	087°05'56.5"	22°36'26.7"	135	25.09.18	19	D	Poor	372	Sal	
A2	Western	Medinipur	Chandra	Gurguripal	Muchiberia-128	10	97	0	087°14'06.3"	22°26'56.5"	0	16.09.18	0	D	Poor	NIL	Sal	
A3	Western	Medinipur	Chandrakona	Andharnayan	Pataisole-929	15	97	96	087°28'37.9"	22°43'18.9"	403	17.09.18	78	A	Excellent	452	Dev.	
A3	Western	Medinipur	Arabari	Arabari Socio	Sankrui-16	15	95	93	087°23'27.7"	22°39'20.9"	291	19.09.18	58	A	Good	281	Dev.	
A3	Western	Medinipur	Arabari	Arabari	Mahasole-384, Ghagra-450	15	98	92	087°19'21.6"	22°42'00.8"	322	20.09.18	58	A	Good	1000	Dev.	
A3	Western	Medinipur	Bhadutola	Bhadutola	Khas Jangal-513	20	98	76	087°19'47.6"	22°29'57.7"	215	23.09.18	34	A	Average	284	Dev.	
A3	Western	Medinipur	Arabari	Arabari	Buramara-688	15	96	40	087°23'00.3"	22°40'59.1"	189	18.09.18	14	C	Poor	420	Dev.	
A1	Western	Rupnarayan	Amlagora	Chandabila	Dhannardiha-644	10	99	99	087°24'23.7"	22°50'04.2"	255	26.11.18	72	A	Very Good	500	Dev.	
A1	Western	Rupnarayan	Amlagora	Pathrisole	Tatichua-654	20	99	95	087°22'21.7"	22°48'05.2"	264	26.11.18	72	A	Very Good	508	Dev.	
A1	Western	Rupnarayan	Garbeta	Shyamnagar	Pachadahara-618	20	98	88	087°23'22.2"	22°55'58.6"	258	27.11.18	60	A	Good	502	Dev.	

Model	circle	DMU	FMU	Beat	Location	Area	1st year SP	4th year SP	Lat. (N)	Long. (E)	Height	Date of Survey	PS	Cat.	Grade	Length of SMC works in RMT/works in hec.	Working Circle	Remarks
A2	Western	Rupnarayan	Amlagora	Pathrisole	Tatichua-654	5	100	99	087°22'30.8"	22°47'54.4"	164	28.11.18	75	A	Very Good	506	Sal	
A2	Western	Rupnarayan	Amlagora	Raskundu	Dhanghori-59	5	99	73	087°28'59.0"	22°46'53.2"	247	28.11.18	59	B	Good	428	Sal	
A2	Western	Rupnarayan	Garbeta	Shyamnagar	Pachadahara-618	5	98	66	087°23'18.8"	22°55'57.7"	72	28.11.18	46	B	Good	508	Sal	
A3	Western	Rupnarayan	Amlagora	Raskundu	Dukhiasole-910	10	100	97	087°27'43.5"	22°49'21.3"	386	29.11.18	75	A	Very Good	428	Dev.	
A3	Western	Rupnarayan	Amlagora	Chandabila	Dhannardiha-644, Pursusha-770	10	100	96	087°24'25.1"	22°50'03.3"	407	29.11.18	79	A	Excellent	500	Dev.	
A3	Western	Rupnarayan	Amlagora	Pathrisole	Tatichua-654	10	99	94	087°22'21.7"	21°48'05.2"	232	28.11.18	65	A	Very Good	500	Dev.	
A3	Western	Rupnarayan	Amlagora	Pathrisole	Kastogora-649	15	99	82	087°22'31.6"	22°48'21.5"	390	29.11.18	52	A	Good	500	Dev.	
A3	Western	Rupnarayan	Garbeta	Shyamnagar	Pachadahara-618	25	99	77	087°23'43.7"	22°56'11.0"	326	30.11.18	40	A	Average	477	Dev.	



Scheme- A4 (2017-18), Division- Midnapore, Range- Chandra, Beat- Chandra, Location- Baramchati-68, Year plantation- 2017-18, Area- 25 ha.



## Detail monitoring data, A4 model (2017-18) plantation

Area in Ha.& height in cm

Model	Circle	DMU	FMU	Beat	Location	Area	SP	Long. (E)	Lat. (N)	Height	Date of Survey	Length of SMC works in RMT/hec.	Remarks
A4	Central	Bankura (North)	Sonamukhi	Manikbazar	Manikbazar-183	40	100	87°23'48.4"	23°12'41.65"	824	20.12.18	511	
A4	Central	Bankura (North)	Sonamukhi	Indkata	Bense-120, Narula-123	10	100	87°26'30.6"	23°16'20.5"	833	23.12.18	500	
A4	Central	Bankura (North)	Sonamukhi	Indkata	Rajdaha-121	35	100	87°27'31.0"	23°15'44.1"	892	22.12.18	503	
A4	Central	Bankura (North)	Sonamukhi	Indkata	Rajdaha-121	25	100	87°27'05.1"	23°15'40.5"	806	25.11.18	502	
A4	Central	Bankura (North)	Beliatore	Kundulia	Angaria-197	20	100	87°13'49.0"	23°14'01.4"	314	21.11.18	520	
A4	Central	Bankura (North)	Beliatore	Brindabanpur	Kantabesia-198	20	100	87°18'40.2"	23°18'48.8"	377	22.11.18	507	
A4	Central	Bankura (North)	Beliatore	Brindabanpur	Srikrishnapur-197	20	100	87°18'00.8"	23°18'12.3"	374	23.11.18	503	
A4	Central	Bankura (North)	Beliatore	Khag	Jorsal-164	15	100	87°13'37.0"	23°15'18.5"	405	26.11.18	504	
A4	Central	Bankura (North)	Beliatore	Khag	Kushma168, Methana-167	15	100	87°14'58.5"	23°18'07.7"	327	05.12.18	500	
A4	Central	Bankura (North)	Beliatore	Khag	Kushma-168	15	100	87°15'25.5"	23°17'42.9"	377	06.12.18	528	
A4	Central	Bankura (North)	Radhanagar	Balarampur	Nagalbhanga-18	15	100	87°23'58.2"	23°10'45.8"	416	07.12.18	520	
A4	Central	Bankura (North)	Radhanagar	Bhora	Hurhur-187	10	100	87°22'53.2"	23°12'00.7"	368	24.11.18	513	

Model	Circle	DMU	FMU	Beat	Location	Area	SP	Long. (E)	Lat. (N)	Height	Date of Survey	Length of SMC works in RMT/hec.	Remarks
A4	Central	Bankura (North)	Radhanagar	Bhora	Chak-Chumosina-19	10	100	87°22'31.6"	23°10'58.1"	404	24.11.18	513	
A4	Central	Bankura (North)	Barjora	Barjora	Saharjora-26	15	100	87°13'31.0"	23°25'00.0"	387	07.12.18	500	
A4	Central	Bankura (South)	Ranibandh	Ranibandh	Barapacha-123	30	100	86°44'02.6"	22°45'43.2"	791	30.11.18	529	
A4	Central	Bankura (South)	Ranibandh	Ranibandh	Mahadevsinan-121	50	100	86°45'17.2"	22°50'35.9"	784	28.11.18	461	
A4	Central	Bankura (South)	Ranibandh	Ranibandh	Mitham-122	20	100	86°44'56.7"	22°50'23.9"	770	08.12.18	500	
A4	Central	Bankura (South)	Ranibandh	Ranibandh	Ledapukur-120	10	100	86°44'39.8"	22°50'59.6"	795	09.12.18	493	
A4	Central	Bankura (South)	Ranibandh	Ranibandh	Buriam-112	40	100	86°48'44.8"	22°51'03.2"	769	02.12.18	470	
A4	Central	Bankura (South)	Ranibandh	Punshya	Khejurkhenna-173	10	100	86°47'56.7"	22°47'01.6"	763	09.12.18	473	
A4	Central	Bankura (South)	Jhilimili	Jhilimili	Rautora-129	22	100	86°03'46.4"	22°14'02.7"	827	10.12.18	509	
A4	Central	Bankura (South)	Jhilimili	Jhilimili	Sutan-153	8	100	86°44'58.5"	22°48'20.0"	825	23.12.18	507	
A4	Central	Bankura (South)	Motgoda	Pirrah	Nachna-107	60	100	86°49'31.56"	22°50'16.2"	392	30.11.18	521	
A4	Central	Bankura (South)	Fulkushma	Susunia	Kharujhore-172	20	100	86°48'59.08"	22°42'32.4"	841	01.12.18	537	
A4	Central	Bankura (South)	Fulkushma	Fulkushma	Raspal-249	20	100	86°49'29.02"	22°43'48.0"	831	02.12.18	500	
A4	Central	Bankura (South)	Fulkushma	Bagdubi	Bholagara-154	20	100	86°47'43.09"	22°47'12.4"	364	03.12.18	500	

Model	Circle	DMU	FMU	Beat	Location	Area	SP	Long. (E)	Lat. (N)	Height	Date of Survey	Length of SMC works in RMT/hec.	Remarks
A4	South-East	Burdwan	Durgapur	Gopalpur	Gopalpur-65	25	100	87°23.23.3'	23°30.49.4"	294	19.09.18	429	
A4	South-East	Burdwan	Durgapur	Gopalpur	Gopalpur-65	30	100	87°23'57.2"	23°31'31.3"	312	17.09.18, 18.09.18	187	
A4	South-East	Burdwan	Durgapur	Gopalpur	Trilokchandrapur-69	25	100	87°26'25.1"	23°30'49.7"	289	15.09.18, 16.09.18	404	
A4	South-East	Burdwan	Guskara	Pratappur	Radhaballavpur-55	13	100	87°34'18.3"	23°27'15.0"	270	21.12.18	420	
A4	South-East	Burdwan	Guskara	Pratappur	Kuldiha-53	17	100	87°33'47.7"	23°28'40.3"	276	21.12.18	422	
A4	South-East	Burdwan	Panagarh	Aduria	Jalikandar-22	22	100	87°33'33.4"	23°32'30.2"	284	22.12.18	420	
A4	South-East	Burdwan	Panagarh	Aduria	Hedogaria-12, Moukhira-1	5	100	87°32'12.9"	23°34'48.3"	285	22.12.18	428	
A4	South-East	Burdwan	Panagarh	Aduria	Farijungle-16, Hedogoria-12	41	100	87°32'20.9"	23°33'31.1"	298	23.12.18, 24.12.18	402	
A4	South-West	Purulia	Bagmundi	Bagmundi	Bareria-103	30	100	86°05.763'	23°12.508'	307	21.10.18	333	
A4	South-West	Purulia	Bagmundi	Bagmundi	Charida-89	40	100	86°02.201'	23°12.927'	291	22.10.18	400	
A4	South-West	Purulia	Bagmundi	Bagmundi	Nischantapur-63	20	100	86°00'42.89"	23°13'41.76"	285	23.10.18	560	
A4	South-West	Purulia	Bagmundi	Burda	Ichakota-68	10	100	86°01'03.36"	23°15'08.35"	296	23.10.18	430	
A4	South-West	Purulia	Ajodhya	Ajodhya	Ajodhya-108	50	100	86°13'52.8'	23°21'64.5'	294	24.10.18, 25.10.18	490	

Model	Circle	DMU	FMU	Beat	Location	Area	SP	Long. (E)	Lat. (N)	Height	Date of Survey	Length of SMC works in RMT/hec.	Remarks
A4	South-West	Purulia	Jhalda	Kalma	Kalma-16	10	100	85°55'01.5'	23°27'30.2'	275	25.10.18	393	
A4	South-West	Purulia	Jhalda	Kalma	Kalma-16	60	100	85°55'94.5'	23°27'49.2'	250	26.10.18, 27.10.18	432	
A4	South-West	Purulia	Jhalda	Kudagara	Kudagara-13	20	100	85°54'67.4'	23°28'31.7'	267	28.10.18	339	
A4	South-West	Purulia	Jhalda	Gutilowa	Gutilowa-149	20	100	85°59'71.8'	23°20'41.9'	256	28.10.18	363	
A4	Western	Jhargram	Gidhni	Kanaisole	Dumuria-75	25	100	86°49'06.5"	22°28'57.3"	237	21.02.19	495	
A4	Western	Jhargram	Gidhni	Kanaisole	Dumuria-75	25	100	86°48'49.8"	22°28'58.8"	206	21.02.19	492	
A4	Western	Jhargram	Gidhni	Kanaisole	Dhobakuria-76, Chandabila-41	25	100	86°48'10.8"	22°28'57.7"	269	23.02.19	482	
A4	Western	Jhargram	Gidhni	Kanaisole	Ranisoile-132, Chilkigarh-131, Khatgeria	25	100	86°52'22.5"	22°27'30.6"	288	25.02.19	426	
A4	Western	Jhargram	Gidhni	Kanaisole	Khatgeria-114, Madhupur-130	25	100	86°52'12.1"	22°27'13.7"	267	26.02.19	502	
A4	Western	Jhargram	Gidhni	Kanaisole	Barsole-77, Dhobakuria-76	25	100	86°47'54.2"	22°28'44.2"	215	05.03.19, 06.03.19	482	
A4	Western	Jhargram	Lodhasuli	Lodhasuli	Khasjungle-937	15	100	87°03'04.5"	22°18'33.2"	543	24.02.19	388	

Model	Circle	DMU	FMU	Beat	Location	Area	SP	Long. (E)	Lat. (N)	Height	Date of Survey	Length of SMC works in RMT/hec.	Remarks
A4	Western	Jhargram	Lodhasuli	Chandri-II	Khasjungle-782	15	100	86°57'07.3"	22°21'04.5"	236	07.03.19	448	
A4	Western	Jhargram	Lodhasuli	Chandri-II	Khasjungle-782	15	100	86°56'18.7"	22°20'08.1"	298	08.03.19	432	
A4	Western	Jhargram	Lodhasuli	Chandri-II	Khasjungle-906	25	100	86°58'18.2"	22°17'38.2"	317	09.03.19	468	
A4	Western	Jhargram	Lodhasuli	Chandri-I	Khasjungle-909	25	100	86°59'03.0"	22°19'35.4"	262	09.03.19	468	
A4	Western	Jhargram	Lodhasuli	Chandri-I	Khasjungle-908	25	100	86°57'24.6"	22°19'11.2"	268	10.03.19	443	
A4	Western	Kharagpur	Hijli	Porapara	Bhetia-166	45	100	87°16'26.2"	22°14'20.1"	360	24.12.18, 25.12.18	478	
A4	Western	Kharagpur	Hijli	Khajra	Lengamara-12	25	100	87°16'19.0"	22°11'35.8"	311	26.12.18	494	
A4	Western	Kharagpur	Hijli	Khajra	Barchati-14	15	100	87°13'56.3"	22°11'57.2"	302	27.12.18	505	
A4	Western	Kharagpur	Hijli	Khajra	Ghritagram-1	15	100	87°11'19.5"	22°13'15.0"	312	28.12.18	517	
A4	Western	Kharagpur	Kalaikunda	Sankrail	Sankrail Durgahari-187	20	100	87°08'02.7"	22°11'41.8"	315	29.12.18	506	
A4	Western	Kharagpur	Chandabila	Chandabila	Dulki-25	20	100	87°00'20.8"	22°03'50.4"	301	02.01.19	471	
A4	Western	Kharagpur	Chandabila	Patina	Tiakati-10	10	100	87°02'49.2"	22°08'34.4"	275	03.01.19	482	
A4	Western	Kharagpur	Chandabila	Patina	Khasjungle-11	20	100	87°01'14.2"	22°08'37.0"	335	04.01.19	482	
A4	Western	Kharagpur	Chandabila	Barpat	Pathardahara-30	20	100	87°00'44.7"	22°06'32.5"	296	05.01.19	500	
A4	Western	Kharagpur	Nayagram	Nayagram	Sitalpura-146	20	100	87°10'22.7"	22°01'00.5"	325	06.01.19, 07.01.19	487	

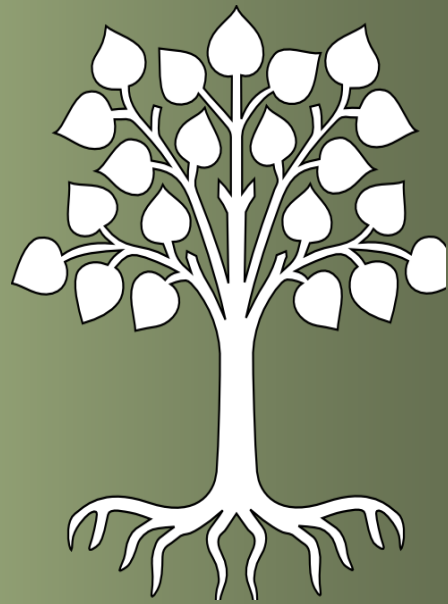
Model	Circle	DMU	FMU	Beat	Location	Area	SP	Long. (E)	Lat. (N)	Height	Date of Survey	Length of SMC works in RMT/hec.	Remarks
A4	Western	Medinipur	Arabari	Socio	Majigarh and Sapadiha-15	20	100	87°23'12.1"	22°39'53.4"	291	26.10.18	396	
A4	Western	Medinipur	Arabari	Arabari	Ghagra-450	10	100	87°18'54.0"	22°40'58.3"	306	27.10.18	482	
A4	Western	Medinipur	Nayabasad	Nayabasad	Damodarpur-316	15	100	87°16'37.1"	22°42'42.4"	316	28.10.18	477	
A4	Western	Medinipur	Nayabasad	Keyamacha	Bankumari-295	20	100	87°14'09.1"	22°43'44.7"	294	29.10.18	462	
A4	Western	Medinipur	Chandrakona	Kanthaldiha	Kanthaldiha-735	10	100	87°23'13.8"	22°45'59.9"	294	30.10.18	492	
A4	Western	Medinipur	Pirakata	Bhimsole	Abradihi-102, Murari-99, Chotobhimpur, Bhabanipur, Kanksole, Dharmapur	25	100	87°10'28.0"	22°33'95.5"	303	26.11.18, 27.11.18	459	
A4	Western	Medinipur	Pirakata	Bhimsole	Pathri-111, Srikrishnapur-112	30	100	87°09'17.6"	22°31'22.4"	300	27.10.18, 28.10.18	446	
A4	Western	Medinipur	Pirakata	Bhimsole	Abradihi-102	10	100	87°10'38.6"	22°33'35.2"	299	30.10.18	462	
A4	Western	Medinipur	Pirakata	Bhimsole	Bhangabandh-192	10	100	87°11'30.2"	22°31'13.2"	322	31.10.18	470	
A4	Western	Medinipur	Pirakata	Ranja	Jamirgote-15	20	100	87°09'18.7"	22°38'00.7"	300	01.11.18	438	
A4	Western	Medinipur	Pirakata	Ranja	Pathri	10	100	87°09'47.5"	22°30'40.5"	301	02.11.18, 03.11.18	464	

Model	Circle	DMU	FMU	Beat	Location	Area	SP	Long. (E)	Lat. (N)	Height	Date of Survey	Length of SMC works in RMT/hec.	Remarks
A4	Western	Medinipur	Pirakata	Ranja	Bankisole-131	30	100	87°11'42.1"	22°38'18.4"	294	02.11.18, 03.11.18	464	
A4	Western	Medinipur	Pirakata	Ranja	Ghagrasole-168	10	100	87°12'04.6"	22°37'19.6"	311	04.11.18	452	
A4	Western	Medinipur	Bhadutala	Moupal	Natundihi, Balisole	10	100	87°12'37.3"	22°31'31.8"	287	05.11.18	392	
A4	Western	Medinipur	Bhadutala	Bhadutala	Nischantapur	10	100	87°19'02.9"	22°29'23.9"	287	05.11.18	396	
A4	Western	Medinipur	Bhadutala	Moupal	KJ-227	10	100	87°15'30.2"	22°28'56.9"	304	06.11.18	384	
A4	Western	Medinipur	Bhadutala	Moupal	Karamarasole- 215	20	100	87°13'40.4"	22°30'14.8"	324	31.10.18	392	
A4	Western	Medinipur	Chandra	Chandra	Metal-208	10	100	87°11'34.8"	22°29'07.1"	308	01.11.18	388	
A4	Western	Medinipur	Chandra	Chandra	Baramchati-68, Tiakati-67	25	100	87°10'31.4"	22°27'37.2"	316	02.11.18, 03.11.18	400	
A4	Western	Medinipur	Chandra	Chandra	Pidrasole-115, Sarengasole-116	20	100	87°11'28.8"	22°26'55.8"	281	01.11.18	396	
A4	Western	Medinipur	Chandra	Chandra	Sirshi-21, Dhabasoldhi-42, Jharia	10	100	87°08'31.2"	22°29'17.6"	309	05.11.18	390	
A4	Western	Medinipur	Chandra	Gurguripal	Muchiberia-128	15	100	87°14'35.4"	22°26'51.8"	293	06.11.18	394	
A4	Western	Rupnarayan	Goaltore	Barapatasole	Nadaria-2	5	100	87°08'11.4"	22°40'39.7"	310	01.12.18	478	
A4	Western	Rupnarayan	Goaltore	Barapatasole	Murakati-77	20	100	87°07'58.3"	22°41'45.2"	298	02.12.18	493	



Model	Circle	DMU	FMU	Beat	Location	Area	SP	Long. (E)	Lat. (N)	Height	Date of Survey	Length of SMC works in RMT/hec.	Remarks
A4	Western	Rupnarayan	Goaltore	Ramgarh	Jangalkhas-688	10	100	87°06'58.9"	22°40'29.3"	310	03.12.18	487	
A4	Western	Rupnarayan	Goaltore	Ramgarh	Jangalkhas-689	5	100	87°05'27.3"	22°39'55.8"	313	03.12.18	484	
A4	Western	Rupnarayan	Goaltore	Ramgarh	Jangalkhas-688	5	100	87°03'48.9"	22°39'47.2"	319	03.12.18	472	
A4	Western	Rupnarayan	Goaltore	Ramgarh	Ghoraghati-76, Kadosole-78	10	100	87°06'47.7"	22°41'40.7"	308	04.12.18	485	
A4	Western	Rupnarayan	Mahalisai	Ruperghagra	Bankati-15	20	100	87°05'20.6"	22°48'22.8"	313	05.12.18	472	
A4	Western	Rupnarayan	Mahalisai	Ruperghagra	Rangilala-57	20	100	87°05'50.3"	22°46'37.0"	311	06.12.18	438	
A4	Western	Rupnarayan	Mahalisai	Ruperghagra	Bhalukbasa-52	10	100	87°05'33.3"	22°49'21.4"	303	07.12.18	456	
A4	Western	Rupnarayan	Mahalisai	Ruperghagra	Rengtia-9	10	100	87°05'58.5"	22°50'07.0"	308	07.12.18	468	
A4	Western	Rupnarayan	Hoomgarh	Hoomgarh	Hadhodi-360	10	100	87°15'09.1"	22°48'51.3"	272	08.12.18	454	
A4	Western	Rupnarayan	Hoomgarh	Baromesia	Karasole-146	5	100	87°13'38.9"	22°47'48.8"	301	08.12.18	420	
A4	Western	Rupnarayan	Hoomgarh	Baromesia	Kesia-151	5	100	87°10'23.1"	22°33'51.7"	300	09.12.18	434	
A4	Western	Rupnarayan	Hoomgarh	Hoomgarh	Birbandhi-361	5	100	87°15'40.9"	22°47'54.2"	300	09.12.18	412	
A4	Western	Rupnarayan	Amlagora	Raskundu	Panikotor, Rampur-747	10	100	87°25'13.1"	22°48'20.1"	184	09.12.18	493	

**“The cleanest way into the universe is through a forest wilderness”**



**Survey Monitoring Report on  
Plantation Under West Bengal Forest  
& Bio-diversity Conservation Project  
(2018-19)**

**Published by- Monitoring (South) Division**

Communication  
Office of the Divisional Forest Officer  
Monitoring (South) Division  
Kolkata Improvement Trust Building  
P-16 India Exchange Place Extension  
Kolkata-700073

